

VORTAC GRD 115.5 Chan 102	APP CRS 080°	Rwy Idg 5001 TDZE 631 Apt Elev 631
---	------------------------	---

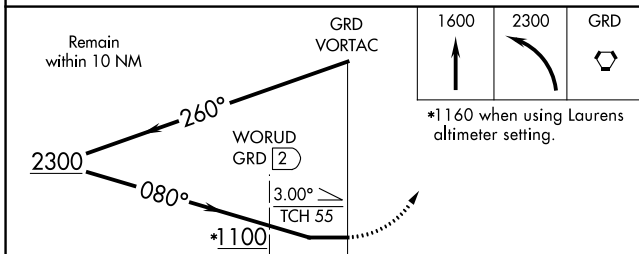
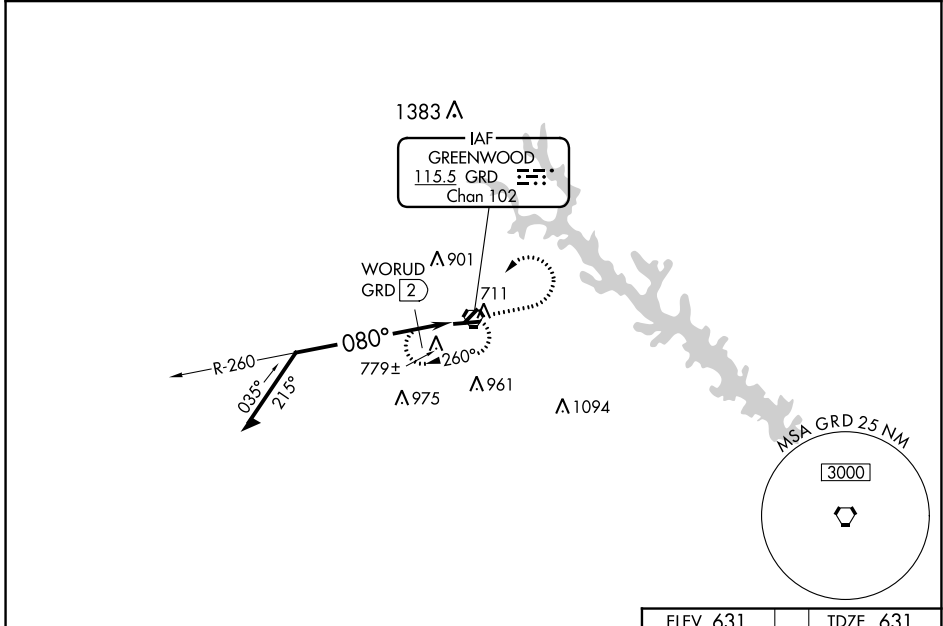
VOR RWY 9

GREENWOOD COUNTY (GRD)

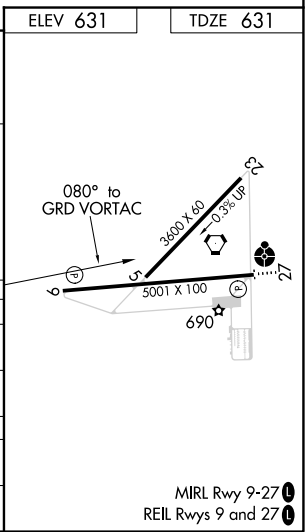
⚠ Circling Rwy 5, 23 NA at night. When local altimeter setting not received, use Laurens altimeter setting: increase all MDA 60 feet and Cats C and D visibility ¼ SM. Rwy 9 helicopter visibility reduction below ¾ SM NA.

MISSED APPROACH: Climb to 1600 then climbing left turn to 2300 direct GRD VORTAC and hold.

ASOS 121.125	GREER APP CON ★ 120.6 350.2	UNICOM 122.975 (CTAF) 📻
------------------------	---------------------------------------	--



CATEGORY	A	B	C	D
S-9	1100-1	469 (500-1)	1100-1⅜	469 (500-1⅜)
C CIRCLING	1100-1	469 (500-1)	1320-2 689 (700-2)	1340-2¼ 709 (800-2¼)
WORUD FIX MINIMUMS (DME REQUIRED)				
S-9	1040-1	409 (500-1)	1040-1⅛	409 (500-1⅛)
C CIRCLING	1080-1 449 (500-1)	1100-1 469 (500-1)	1320-2 689 (700-2)	1340-2¼ 709 (800-2¼)



MIRL Rwy 9-27 **📻**
REIL Rwys 9 and 27 **📻**

SE-2, 16 JUN 2022 to 14 JUL 2022

SE-2, 16 JUN 2022 to 14 JUL 2022