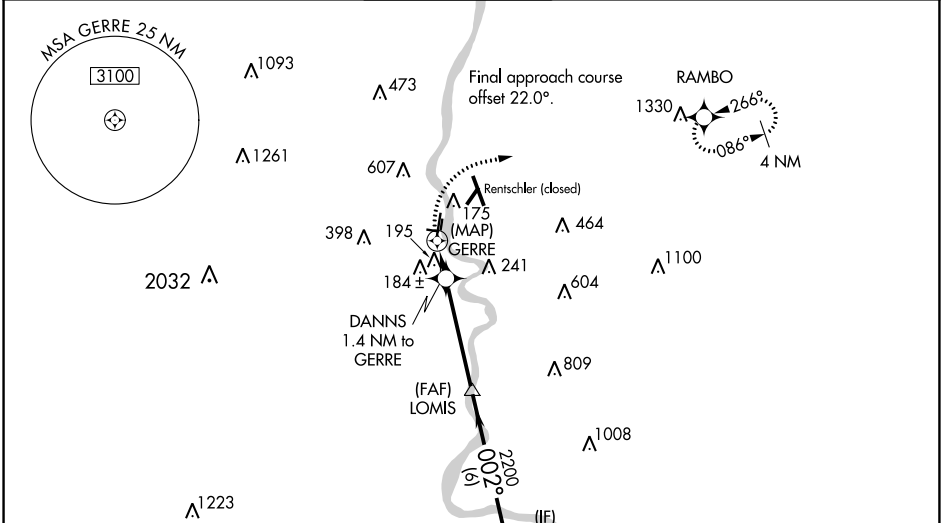


APP CRS	Rwy Idg	4006
002°	TDZE	17
	Apt Elev	18

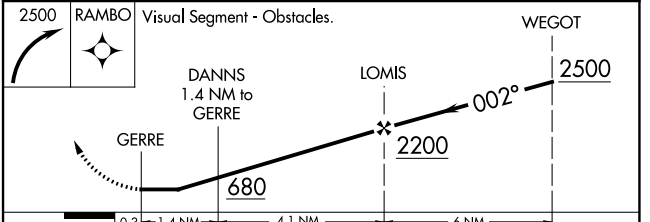
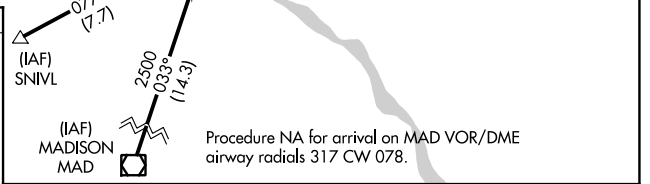
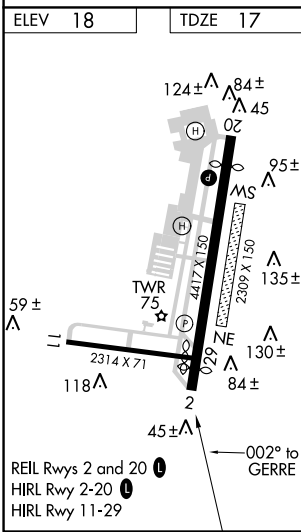
RNAV (GPS) RWY 2

HARTFORD-BRAINARD (HF'D)

RNP APCH.		BRAINARD TOWER * 119.6 (CTAF) 0 248.2		GND CON 121.6	CLNC DEL 121.6	UNICOM 122.95
<p>▼ Circling NA at night. Rwy 2 helicopter visibility reduction below 1 SM NA. ▲ Straight-in Rwy 2 at night, operational VGSI required, remain on or above VGSI glidepath until threshold.</p>				MISSED APPROACH: Climbing right turn to 2500 direct RAMBO and hold.		



Procedure NA for arrivals at SNIVL on V229 southwest bound and arrivals at THUMB on V58 and T216 southeast bound.



CATEGORY	A	B	C	D
LNAV MDA	460-1	443 (500-1)	460-1 3/8	443 (500-1 1/8)
CIRCLING	580-1 562 (600-1)	900-1 1/4 882 (900-1 1/4)	920-2 3/4 902 (1000-2 3/4)	920-3 902 (1000-3)

NE-1, 16 JUN 2022 to 14 JUL 2022

NE-1, 16 JUN 2022 to 14 JUL 2022