

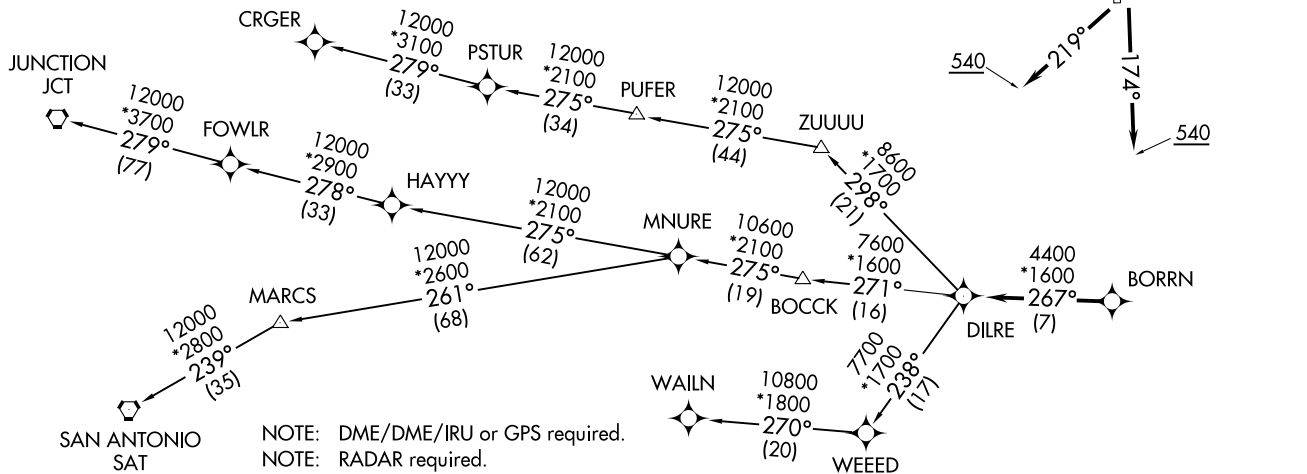
BORRN FOUR DEPARTURE (RNAV)
(BORRN4, BORRN) 25APR19

HOUSTON, TEXAS
ELLINGTON (E,F,D)

ATIS
135.575 269.9
GND CON
121.6 275.8
ELLINGTON TOWER
126.05 253.5
HOUSTON DEP CON
134.45 284.0

TAKEOFF MINIMUMS:
Rwy 4, 17L/R, 22, 35L/R:
Standard with minimum
climb of 500' per NM to 540.

TOP ALTITUDE:
ASSIGNED BY ATC



NOTE: DME/DME/IRU or GPS required.
NOTE: RADAR required.
NOTE: RNAV 1.
NOTE: CRGER TRANSITION ATC assigned only
for aircraft departing 54T, AXH, EFD, GLS,
HPY, IWS, LBX, LVJ, SGR, TME, T00, T41.

(NARRATIVE ON FOLLOWING PAGE)

NOTE: Chart not to scale.

(BORRN4, BORRN) 21112
BORRN FOUR DEPARTURE (RNAV)

AL-197 (FAA)

ELLINGTON (E,F,D)
HOUSTON, TEXAS

BORRN FOUR DEPARTURE (RNAV)



DEPARTURE ROUTE DESCRIPTION

TAKEOFF RWY 4: Climb on heading 039° to 540, for RADAR vectors to BORRN, thence. . . .

TAKEOFF RWYS 17L/R: Climb on heading 174° to 540, for RADAR vectors to BORRN, thence. . . .

TAKEOFF RWY 22: Climb on heading 219° to 540, for RADAR vectors to BORRN, thence. . . .

TAKEOFF RWYS 35L/R: Climb on heading 354° to 540, for RADAR vectors to BORRN, thence. . . .

. . . .on track 267° to DILRE, then on (transition). Maintain ATC assigned altitude. Expect filed altitude 10 minutes after departure.

CRGER TRANSITION (BORRN4.CRGER)

JUNCTION TRANSITION (BORRN4.JCT)

MNURE TRANSITION (BORRN4.MNURE)

SAN ANTONIO TRANSITION (BORRN4.SAT)

WAILN TRANSITION (BORRN4.WAILN)

SC-5, 16 JUN 2022 to 14 JUL 2022

SC-5, 16 JUN 2022 to 14 JUL 2022