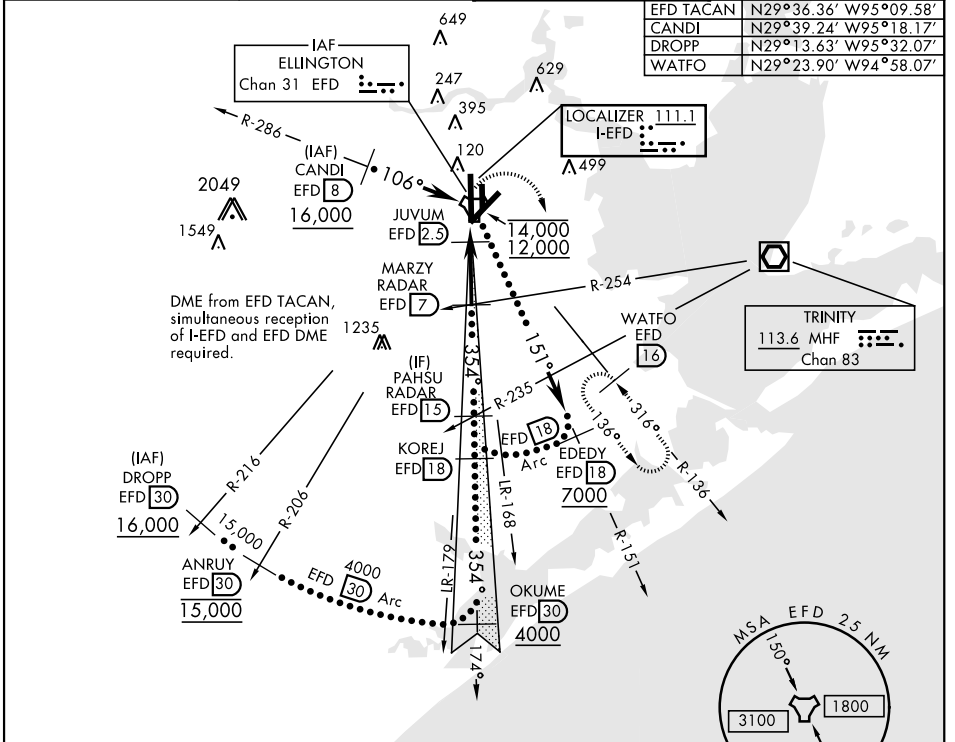


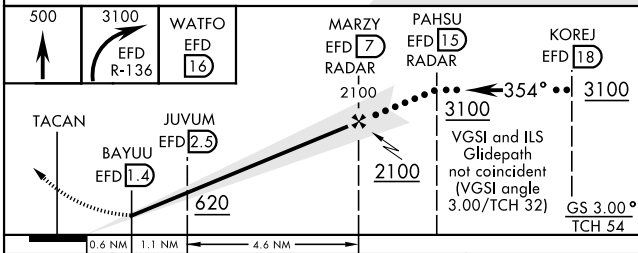
HI-ILS Y or LOC Y RWY 35L

LOC I-EFD 111.1	APCH CRS 354°	Rwy Idg 9001	TDZE 28	Arprt Elev 33	AL-197 [USAF]	ELLINGTON (KEFD)
DME required. RADAR required for procedure entry.			MALSF A4		MISSED APPROACH: Climb to 500 then climbing right turn to 3100 via EFD TACAN R-136 to WATFO INT/EFD 16 DME and hold.	
* When ALS inop, increase CAT CDE RVR to 60. ** Circling not authorized W of rwy 17L-35R						

ATIS 135.575 269.9	HOUSTON APP CON 134.45 284.0	TOWER 126.05 253.5	GND CON 121.6 275.8
-------------------------------------	-----------------------------------------------	-------------------------------------	--------------------------------------

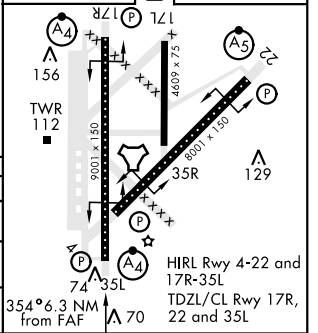


EMERG SAFE ALT 100 NM 16,000



ELEV 33	TDZE 28
----------------	----------------

CATEGORY	C	D	E
S-ILS 35L	228/40	200	(200-¾)
S-LOC 35L *	440/50	412	(500-1)
CIRCLING **	580-1½ 547 (600-1½)	640-2 607 (700-2)	700-2¼ 667 (700-2¼)



HI-ILS Y or LOC Y RWY 35L

SC-5, 16 JUN 2022 to 14 JUL 2022

SC-5, 16 JUN 2022 to 14 JUL 2022