

KARRR SIX DEPARTURE (RNAV)
(KARRR6.KARRR) 05DEC19

HOUSTON, TEXAS
ELLINGTON (EFTD)
ELLINGTON (EFTD)

ATIS
135.575 269.9
GND CON
121.6 275.8
ELLINGTON TOWER
126.05 253.5
HOUSTON DEP CON
134.45 284.0

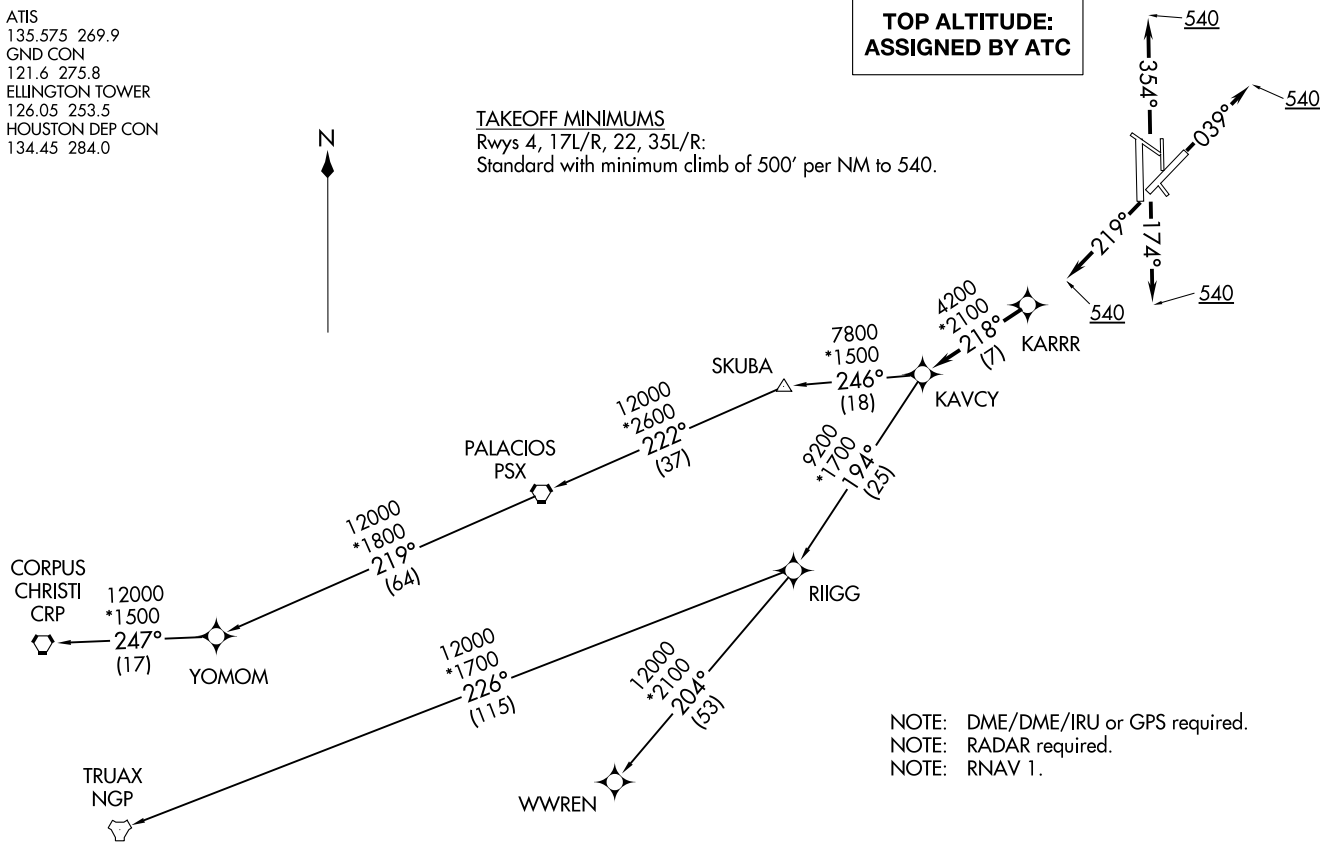


TAKEOFF MINIMUMS

Rwys 4, 17L/R, 22, 35L/R:

Standard with minimum climb of 500' per NM to 540.

**TOP ALTITUDE:
ASSIGNED BY ATC**



NOTE: DME/DME/IRU or GPS required.
NOTE: RADAR required.
NOTE: RNAV 1.

(NARRATIVE ON FOLLOWING PAGE)

NOTE: Chart not to scale.

(KARRR6.KARRR) 19339
KARRR SIX DEPARTURE (RNAV)

AL-197 (FAA)

ELLINGTON (EFTD)
HOUSTON, TEXAS

KARRR SIX DEPARTURE (RNAV)



DEPARTURE ROUTE DESCRIPTION

TAKEOFF RWY 4: Climb on heading 039° to 540, for RADAR vectors to KARRR, thence. . . .

TAKEOFF RWYS 17L/R: Climb on heading 174° to 540, for RADAR vectors to KARRR, thence. . . .

TAKEOFF RWY 22: Climb on heading 219° to 540, for RADAR vectors to KARRR, thence. . . .

TAKEOFF RWYS 35L/R: Climb on heading 354° to 540, for RADAR vectors to KARRR, thence. . . .

. . . .on track 218° to KAVCY, then on (transition). Maintain ATC assigned altitude. Expect filed altitude 10 minutes after departure.

CORPUS CHRISTI TRANSITION (KARRR6.CRP)

PALACIOS TRANSITION (KARRR6.PSX)

TRUAX TRANSITION (KARRR6.NGP)

WWREN TRANSITION (KARRR6.WWREN)

YOMOM TRANSITION (KARRR6.YOMOM)

SC-5, 16 JUN 2022 to 14 JUL 2022

SC-5, 16 JUN 2022 to 14 JUL 2022