

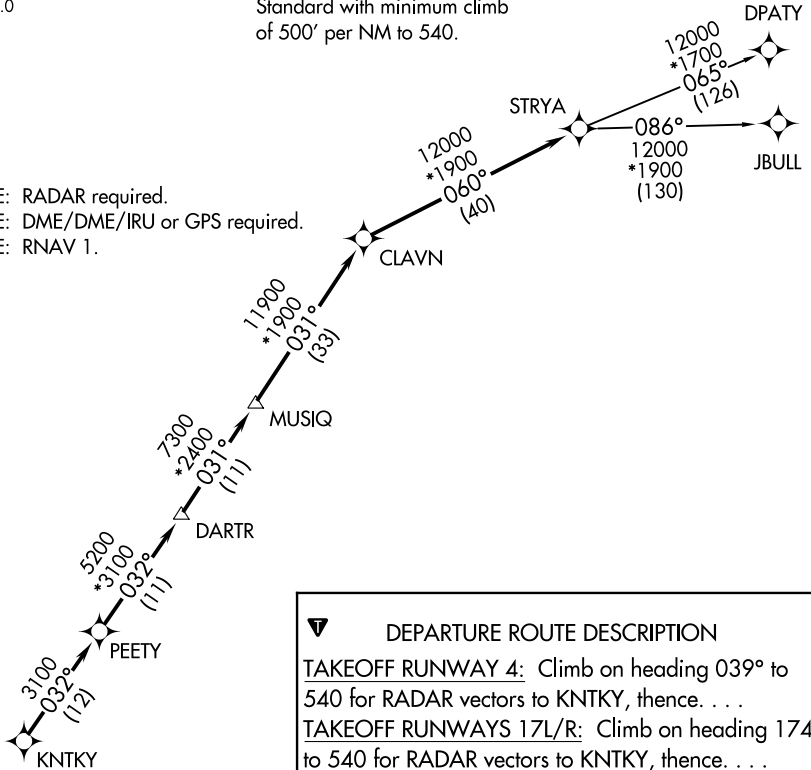
STRYA EIGHT DEPARTURE (RNAV)

TOP ALTITUDE: ASSIGNED BY ATC

ATIS
135.575 269.9
GND CON
121.6 275.8
ELLINGTON TOWER
126.05 253.5
HOUSTON DEP CON
134.45 284.0

TAKEOFF MINIMUMS
Rwys 4, 17L/R, 22, 35L/R:
Standard with minimum climb
of 500' per NM to 540.

NOTE: RADAR required.
NOTE: DME/DME/IRU or GPS required.
NOTE: RNAV 1.



DEPARTURE ROUTE DESCRIPTION

TAKEOFF RUNWAY 4: Climb on heading 039° to 540 for RADAR vectors to KNTKY, thence. . .

TAKEOFF RUNWAYS 17L/R: Climb on heading 174° to 540 for RADAR vectors to KNTKY, thence. . .

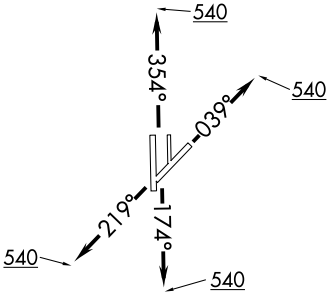
TAKEOFF RUNWAY 22: Climb on heading 219° to 540 for RADAR vectors to KNTKY, thence. . .

TAKEOFF RUNWAYS 35L/R: Climb on heading 354° to 540 for RADAR vectors to KNTKY, thence. . .

. . . on track 032° to PEETY, then on track 032° to DARTR, then on track 031° to MUSIQ, then on track 031° to CLAVN, then on track 060° to STRYA, then on (transition). Maintain ATC assigned altitude. Expect filed altitude 10 minutes after departure.

DPATY TRANSITION (STRYA8.DPATY)

JBULL TRANSITION (STRYA8.JBULL)



NOTE: Chart not to scale.

SC-5, 16 JUN 2022 to 14 JUL 2022

SC-5, 16 JUN 2022 to 14 JUL 2022

STRYA EIGHT DEPARTURE (RNAV)