

FORT SILL, OKLAHOMA

RNAV (GPS) RWY 18

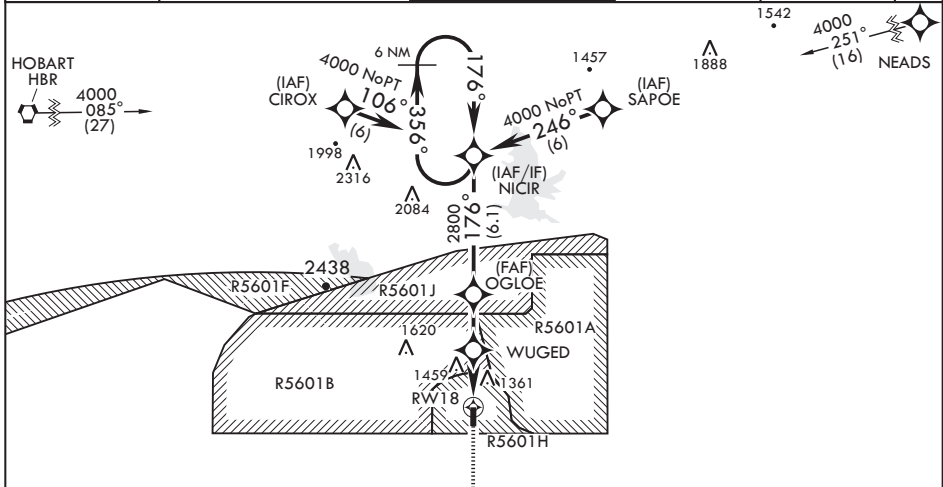
APCH CRS 176°	Rwy Idg TDZE Arpt Elev	5001 1188 1188
------------------	------------------------------	----------------------

AL-230 (USA)

HENRY POST AAF (KFSI)

MISSED APPROACH: Climb to 3500 direct to FESAD and hold.

ATIS 135.425 354.025	FORT SILL APP CON/DEP CON 120.55 322.4	TOWER* 124.95 (CTAF) 0* 229.4	POST GND CON 121.7 279.575	CLNC DEL 121.7 279.575	ASR
-------------------------	---	----------------------------------	-------------------------------	---------------------------	-----

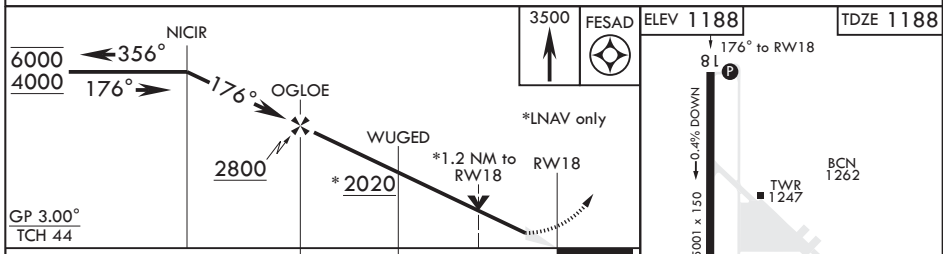
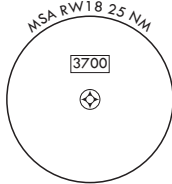
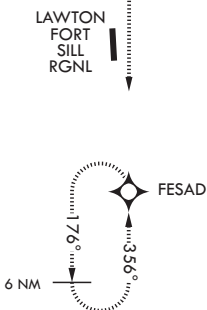


RNP APCH
Procedure NA for arrivals at NEADS on V77 Northbound.

When local altimeter setting not received, use Lawton-Fort Sill RGNL altimeter setting.

For uncompensated Baro-VNAV systems, Procedure NA below -17°C or above 54°C.

Procedure NA for arrival on HBR VORTAC Airway Radials 354 CW 175.



CATEGORY	A	B	C	D
LNAV/VNAV DA	1673-1 3/8		485	(500-1 3/8)
LNAV MDA	1600-1 412 (500-1)	1600-1 412 (500-1 1/8)	1600-1 412 (500-1 1/8)	1600-1 412 (500-1 1/8)
CIRCLING	1680-1 492 (500-1)	1760-1 572 (600-1)	1820-1 3/4 632 (700-1 3/4)	1920-2 1/4 732 (800-2 1/4)

FORT SILL, OKLAHOMA 34°39'N - 98°24'W HENRY POST AAF (KFSI)
Amdt 1 20JUN19

RNAV (GPS) RWY 18

SC-1, 16 JUN 2022 to 14 JUL 2022

SC-1, 16 JUN 2022 to 14 JUL 2022