

FORT SILL, OKLAHOMA

RNAV (GPS) RWY 36

APCH CRS 356°	Rwy Idg 5001
	TDZE 1187
	Arprt Elev 1188

AL-230 (USA)

HENRY POST AAF (KFSI)

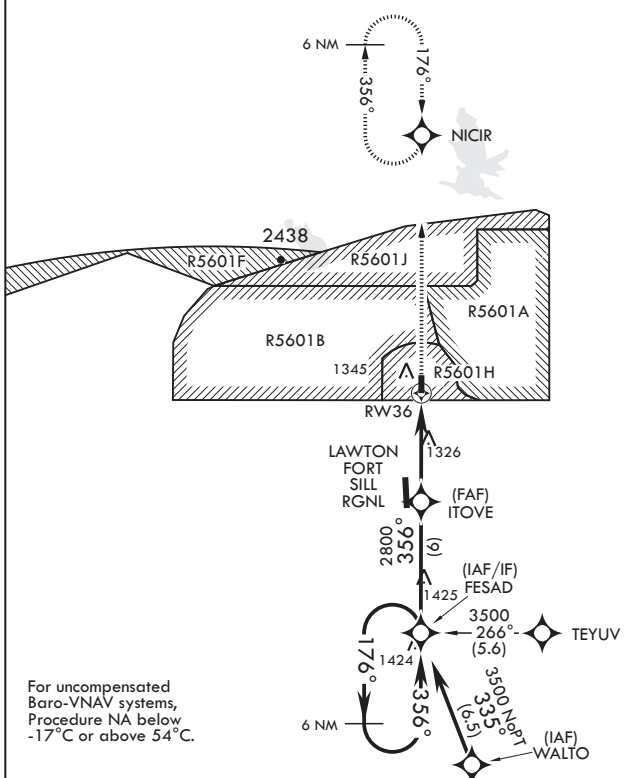
- ⚠ * When ALS inop, increase RVR to 45.
- ⚠ ** When ALS inop, increase CAT CD vis to 1 3/8 SM.



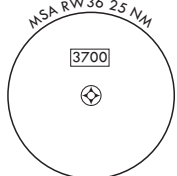
MISSED APPROACH: Climb to 4000 direct NICIR and hold.

ATIS 135.425 354.025	FORT SILL APP CON/DEP CON 120.55 322.4	TOWER* 124.95 (CTAF) 0 229.4	POST GND CON 121.7 279.575	CLNC DEL 121.7 279.575	ASR
--------------------------------	--	--	--------------------------------------	----------------------------------	-----

When local altimeter setting not received, use Lawton-Fort Sill RGNL altimeter setting.



For uncompensated Baro-VNAV systems, Procedure NA below -17°C or above 54°C.



VGSI and RNAV glidepath not coincident.		4000 	ELEV 1188 TDZE 1187	
GP 3.00° TCH 45	6000 3500 176° FESAD 356° ITOVE 2800 † 1.3 NM to RWY 36 † NAV only RWY 36 5 NM		81 P 0.4% UP 5001 x 1.50 TWR 1247 BCN 1262 36 356° to RWY 36 HIRL all Rwys REIL Rwy 18	
CIRCLING	A 1680-1 492 (500-1)	B 1760-1 572 (600-1)	C 1820-1 3/4 632 (700-1 3/4)	D 1920-2 1/4 732 (800-2 1/4)

FORT SILL, OKLAHOMA
Amdt 1 20JUN19

34°39'N - 98°24'W

HENRY POST AAF (KFSI)

RNAV (GPS) RWY 36

SC-1, 16 JUN 2022 to 14 JUL 2022

SC-1, 16 JUN 2022 to 14 JUL 2022