

FORT SILL, OKLAHOMA

# VOR RWY 18

VOR/DME LAW <b>109.4</b> Chan 31	APCH CRS <b>174°</b>	Rwy ldg TDZE Arpt Elev <b>5001</b> <b>1188</b> <b>1188</b>
--	-------------------------	---

AL-230 [USA]

HENRY POST AAF (KFSI)

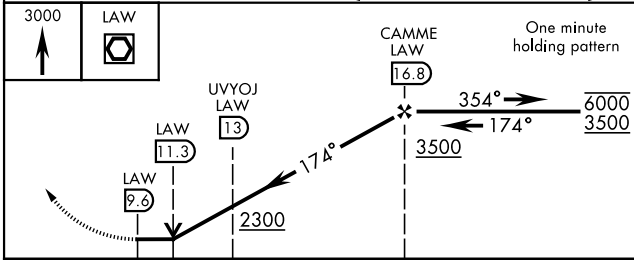
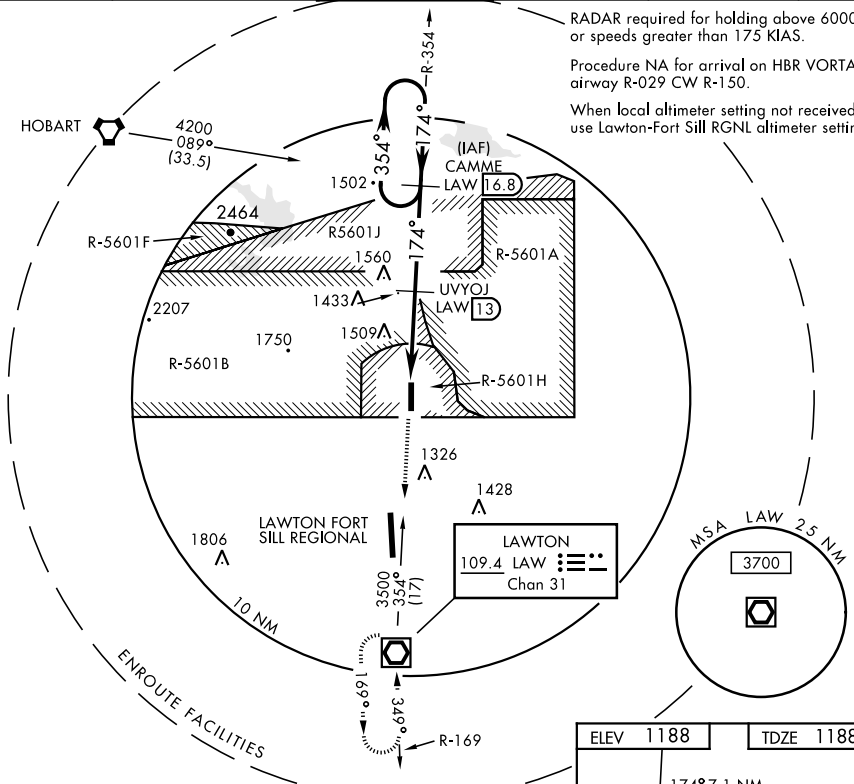
DME required.	MISSED APPROACH: Climb straight ahead to 3000 direct to LAW VOR/DME and hold.
---------------	---

ATIS <b>135.425 354.025</b>	FORT SILL APP CON <b>120.55 322.4</b>	POST TOWER ★(CTAF) <b>124.95 0 229.4</b>	GND CON <b>121.7 279.575</b>	CLNC DEL <b>121.7 279.575</b>	ASR
--------------------------------	--	---	---------------------------------	----------------------------------	-----

RADAR required for holding above 6000', or speeds greater than 175 KIAS.

Procedure NA for arrival on HBR VORTAC airway R-029 CW R-150.

When local altimeter setting not received, use Lawton-Fort Sill RGNL altimeter setting.



ELEV 1188	TDZE 1188
81	1297 A
0.46 DOWN	★ 1262
TWR 1247	
5001 x 150	
36	
A2	
HIRL Rwy 18-36 REL Rwy 18	

CATEGORY	A	B	C	D
S-18	1760-1 572 (600-1)		1760-1½ 572 (600-1½)	
CIRCLING	1760-1 572 (600-1)		1820-1¾ 632 (700-1¾) 1920-2¼ 732 (800-2¼)	

FORT SILL, OKLAHOMA  
Amdt 1 20JUN19

34° 39' N-98° 24' W

HENRY POST AAF (KFSI)

# VOR RWY 18

SC-1, 16 JUN 2022 to 14 JUL 2022

SC-1, 16 JUN 2022 to 14 JUL 2022