

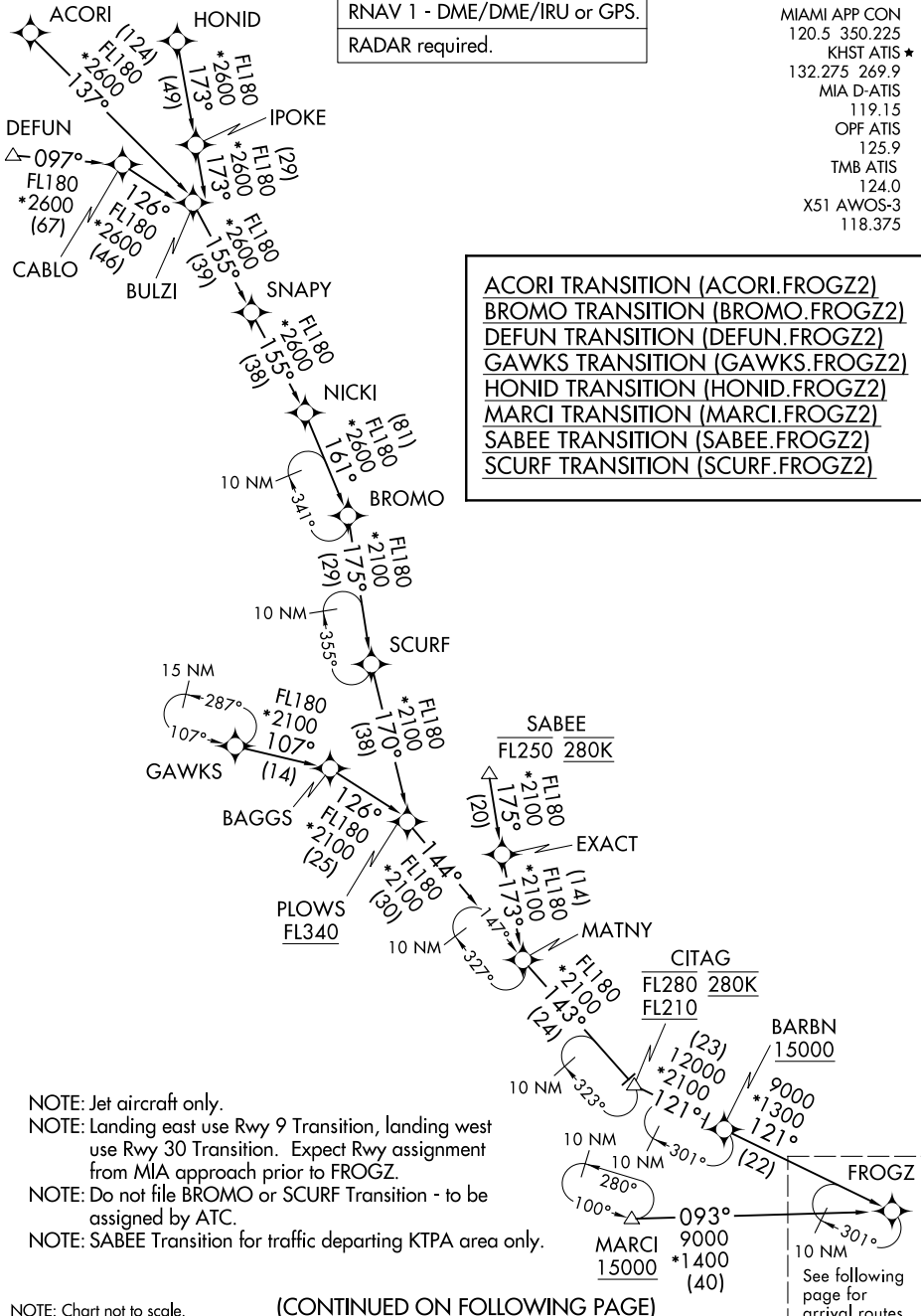
FROGZ TWO ARRIVAL (RNAV) Transition Routes

MIAMI, FLORIDA

RNAV 1 - DME/DME/IRU or GPS.
RADAR required.

MIAMI APP CON
120.5 350.225
KHST ATIS *
132.275 269.9
MIA D-ATIS
119.15
OPF ATIS
125.9
TMB ATIS
124.0
X51 AWOS-3
118.375

- ACORI TRANSITION (ACORI.FROGZ2)
- BROMO TRANSITION (BROMO.FROGZ2)
- DEFUN TRANSITION (DEFUN.FROGZ2)
- GAWKS TRANSITION (GAWKS.FROGZ2)
- HONID TRANSITION (HONID.FROGZ2)
- MARCI TRANSITION (MARCI.FROGZ2)
- SABEE TRANSITION (SABEE.FROGZ2)
- SCURF TRANSITION (SCURF.FROGZ2)



- NOTE: Jet aircraft only.
- NOTE: Landing east use Rwy 9 Transition, landing west use Rwy 30 Transition. Expect Rwy assignment from MIA approach prior to FROGZ.
- NOTE: Do not file BROMO or SCURF Transition - to be assigned by ATC.
- NOTE: SABEE Transition for traffic departing KTPA area only.

NOTE: Chart not to scale.

(CONTINUED ON FOLLOWING PAGE)

10 NM
See following page for arrival routes.

SE-3, 16 JUN 2022 to 14 JUL 2022

SE-3, 16 JUN 2022 to 14 JUL 2022

MIAMI, FLORIDA

RNAV 1 - DME/DME/IRU or GPS.

RADAR required.

MIAMI APP CON
 120.5 350.225
 KHST ATIS ★
 132.275 269.9
 MIA D-ATIS
 119.15
 OPF ATIS
 125.9
 TMB ATIS
 124.0
 X51 AWOS-3
 118.375

(FROGZ, FROGZ2) 22167

AL-257 (FAA) Arrival Routes

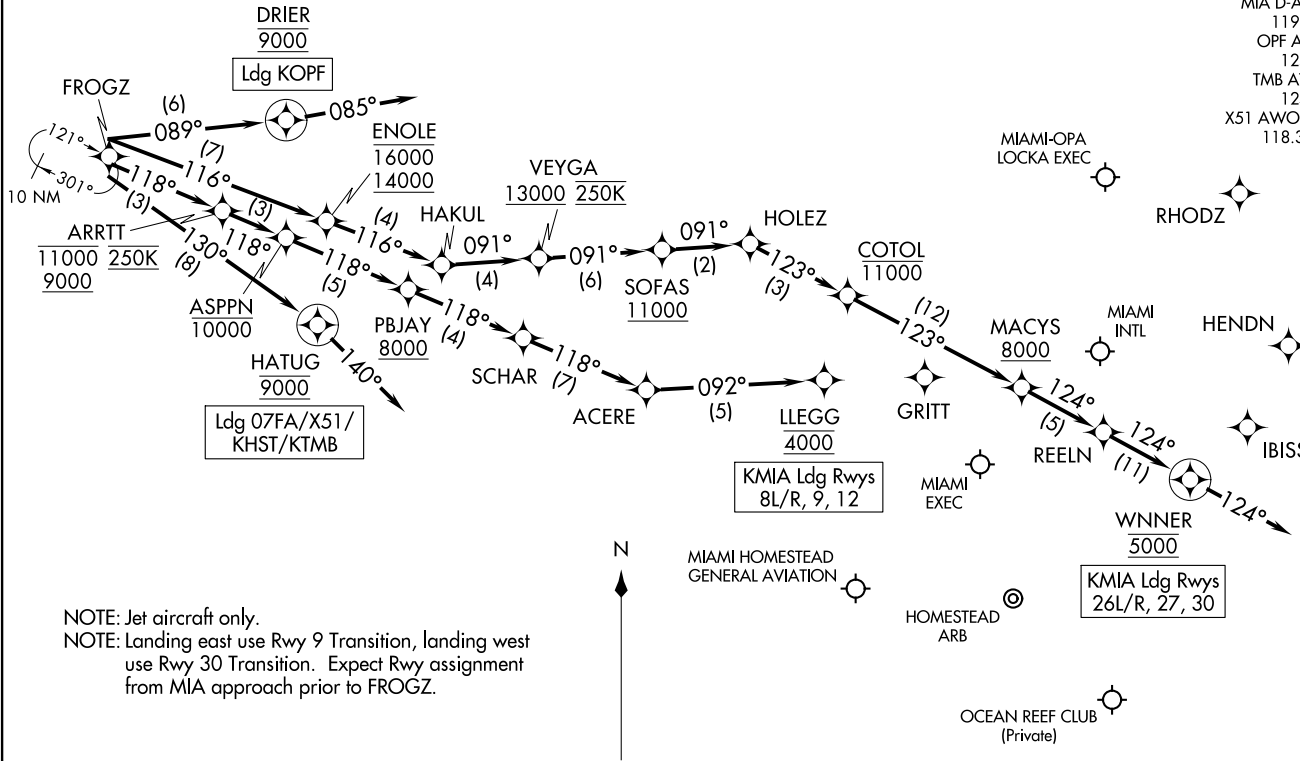
MIAMI, FLORIDA

(FROGZ, FROGZ2) 19MAY22

FROGZ TWO ARRIVAL (RNAV)

Arrival Routes

MIAMI, FLORIDA



NOTE: Jet aircraft only.
 NOTE: Landing east use Rwy 9 Transition, landing west use Rwy 30 Transition. Expect Rwy assignment from MIA approach prior to FROGZ.

NOTE: Chart not to scale.

(NARRATIVE ON FOLLOWING PAGE)

ARRIVAL ROUTE DESCRIPTION

LANDING KMIA RUNWAYS 8L/R, 9, 12: From FROGZ on track 118° to cross ARRTT between 9000 and 11000 and at 250K, then on track 118° to cross ASPPN at or below 10000, then on track 118° to cross PBJAY at or above 8000, then on track 118° to SCHAR, then on track 118° to ACERE, then on track 092° to cross LLEGG at 4000. Expect ILS or RNAV Rwy 9 approach or RADAR vectors to final approach course.

LANDING KMIA RUNWAYS 26L/R, 27, 30: From FROGZ on track 116° to cross ENOLE between 14000 and 16000, then on track 116° to HAKUL, then on track 091° to cross VEYGA at or above 13000 and at 250K, then on track 091° to cross SOFAS at or above 11000, then on track 091° to HOLEZ, then on track 123° to cross COTOL at or below 11000, then on track 123° to cross MACYS at or above 8000, then on track 124° to REELN, then on track 124° to cross WNNER at 5000, then on track 124°. Expect RADAR vectors to final approach course.

LANDING 07FA/X51/KHST/KTMB: From FROGZ on track 130° to cross HATUG at 9000, then on heading 140°. Expect RADAR vectors to final approach course.

LANDING KOPF: From FROGZ on track 089° to cross DRIER at 9000, then on heading 085°. Expect RADAR vectors to final approach course.

SE-3, 16 JUN 2022 to 14 JUL 2022

SE-3, 16 JUN 2022 to 14 JUL 2022