

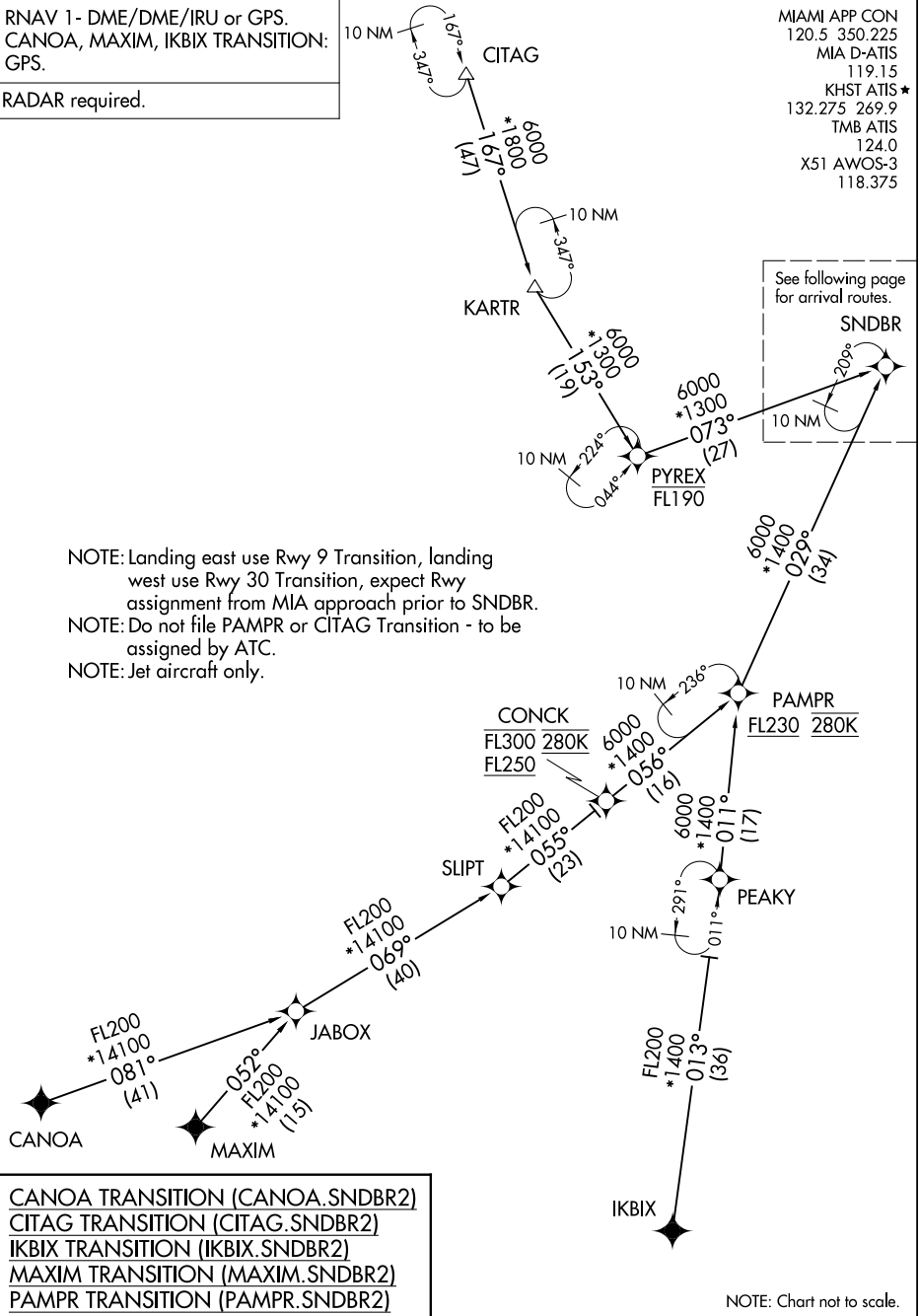
SNDBR TWO ARRIVAL (RNAV) Transition Routes

MIAMI, FLORIDA

RNAV 1- DME/DME/IRU or GPS.
CANOA, MAXIM, IKBIX TRANSITION:
GPS.

RADAR required.

MIAMI APP CON
120.5 350.225
MIA D-ATIS
119.15
KHST ATIS *
132.275 269.9
TMB ATIS
124.0
X51 AWOS-3
118.375



NOTE: Landing east use Rwy 9 Transition, landing west use Rwy 30 Transition, expect Rwy assignment from MIA approach prior to SNDBR.
NOTE: Do not file PAMPR or CITAG Transition - to be assigned by ATC.
NOTE: Jet aircraft only.

See following page for arrival routes.

- CANOA TRANSITION (CANOA.SNDBR2)
- CITAG TRANSITION (CITAG.SNDBR2)
- IKBIX TRANSITION (IKBIX.SNDBR2)
- MAXIM TRANSITION (MAXIM.SNDBR2)
- PAMPR TRANSITION (PAMPR.SNDBR2)

NOTE: Chart not to scale.

SE-3, 16 JUN 2022 to 14 JUL 2022

SE-3, 16 JUN 2022 to 14 JUL 2022

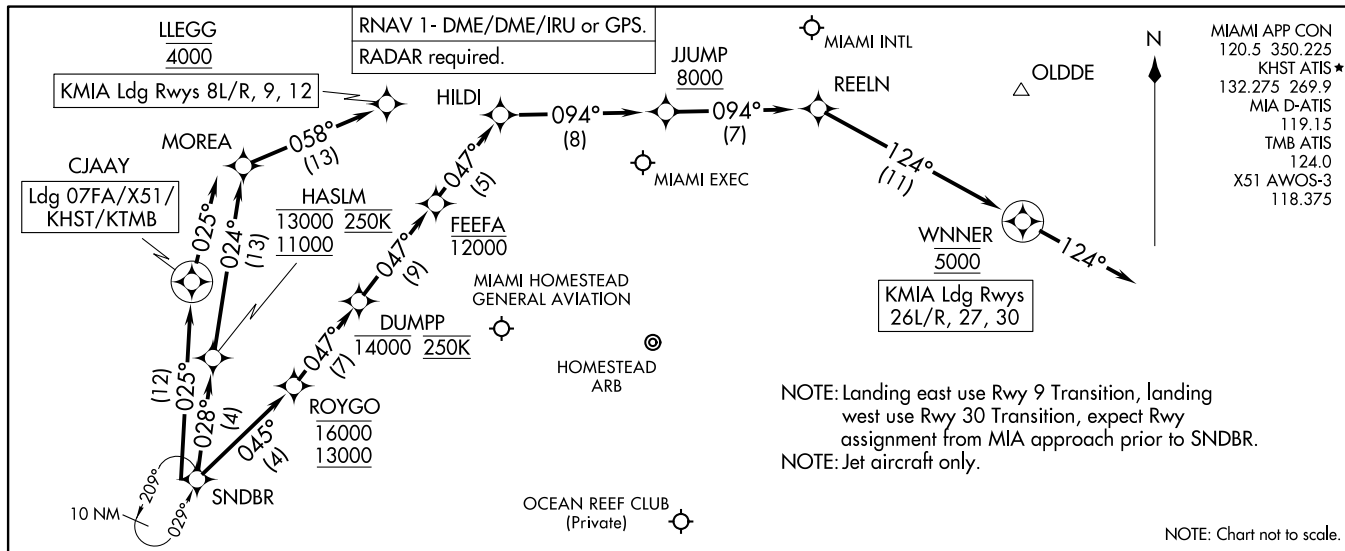
SNDBR TWO ARRIVAL (RNAV) Transition Routes

MIAMI, FLORIDA

(SNDBR.SNDBR2) 19MAY22

SNDBR TWO ARRIVAL (RNAV) Arrival Routes

MIAMI, FLORIDA



MIAMI APP CON
120.5 350.225
KHST ATIS★
MIA D-ATIS
119.15
TMB ATIS
124.0
X51 AWOS-3
118.375

NOTE: Landing east use Rwy 9 Transition, landing west use Rwy 30 Transition, expect Rwy assignment from MIA approach prior to SNDBR.
NOTE: Jet aircraft only.

NOTE: Chart not to scale.

ARRIVAL ROUTE DESCRIPTION

LANDING KMIA RUNWAYS 8L/R, 9, 12: From SNDBR on track 028° to cross HASLM between 11000 and 13000 and at 250K, then on track 024° to MOREA, then on track 058° to cross LLEGG at 4000. Expect ILS or RNAV Rwy 9 approach or RADAR vectors to final approach course.

LANDING KMIA RUNWAYS 26L/R, 27, 30: From SNDBR on track 045° to cross ROYGO between 13000 and 16000, then on track 047° to cross DUMPP at or below 14000 and at 250K, then on track 047° to cross FEEFA at or below 12000, then on track 047° to HILDI, then on track 094° to cross JJUMP at or above 8000, then on track 094° to REELN, then on track 124° to cross WNNER at 5000, then on track 124°. Expect RADAR vectors to final approach course.

LANDING 07FA/X51/KHST/KTMB: From SNDBR on track 025° to CJAAY, then on track 025°. Expect RADAR vectors to final approach course.

(SNDBR.SNDBR2) 22139

AL-257 (FAA) Arrival Routes

MIAMI, FLORIDA