

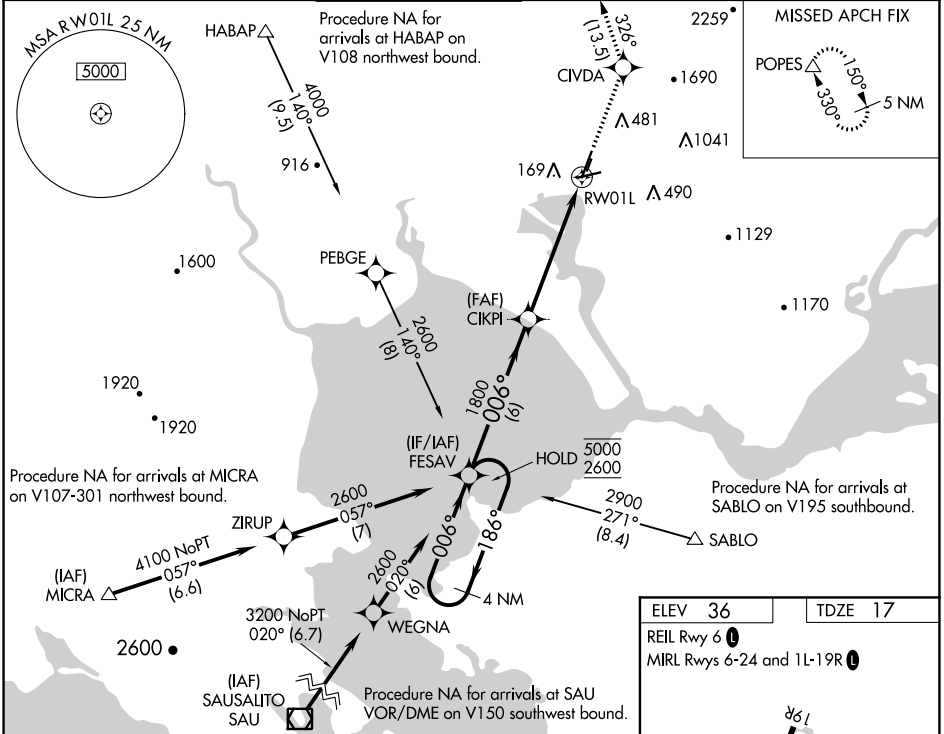
WAAS CH 40313 W01B	APP CRS 006°	Rwy Idg 5930 TDZE 17 Apt Elev 36
--	------------------------	---

RNAV (GPS) Z RWY 1L

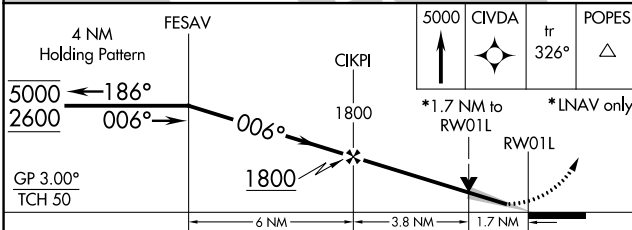
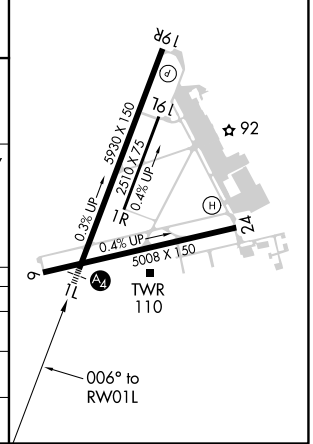
NAPA COUNTY (APC)

RNP APCH.		MALS	MISSED APPROACH: Climb to 5000 direct CIVDA and on track 326° to POPES and hold, continue climb-in-hold to 5000.
<p>▼ For uncompensated Baro-VNAV systems, LNAV/VNAV NA below -4°C or above 54°C. Inop table does not apply to LPV minimums. For inop ALS, increase visibility LNAV/VNAV to 7/5 SM. Missed approach requires minimum climb of 420 feet per NM to 2200. If unable to meet climb gradient see RNAV (GPS) Y RWY 1L.</p>			

ATIS 124.05	OAKLAND CENTER 127.8 353.5	NAPA TOWER ★ 118.7 (CTAF) 0 257.8	GND CON 121.7	CLNC DEL 127.85	UNICOM 122.95
-----------------------	--------------------------------------	---	-------------------------	---------------------------	-------------------------



ELEV 36	TDZE 17
REIL Rwy 6	
MIRL Rwy 6-24 and 1L-19R	



CATEGORY	A	B	C	D
LPV DA		217-3/4	200 (200-3/4)	
LNAV/VNAV DA		330-3/4	313 (300-3/4)	
LNAV MDA	560-3/4	543 (600-3/4)	560-13/8	543 (600-13/8)

SW-2, 16 JUN 2022 to 14 JUL 2022

SW-2, 16 JUN 2022 to 14 JUL 2022