

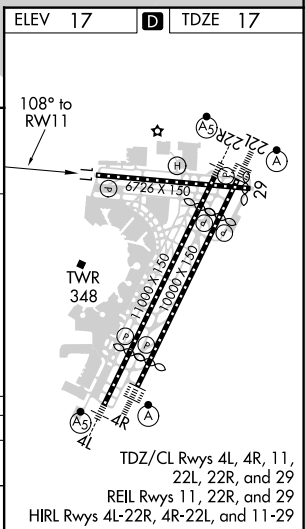
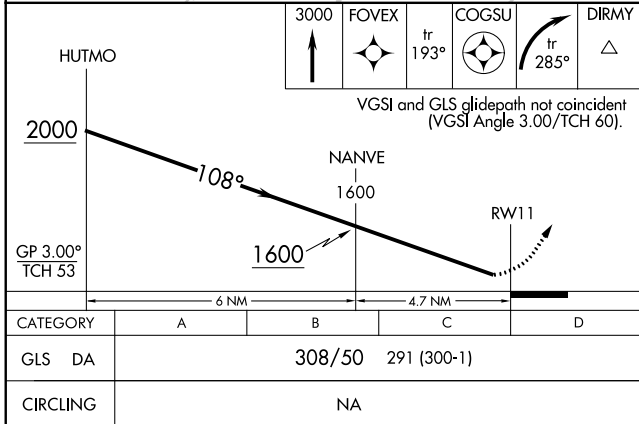
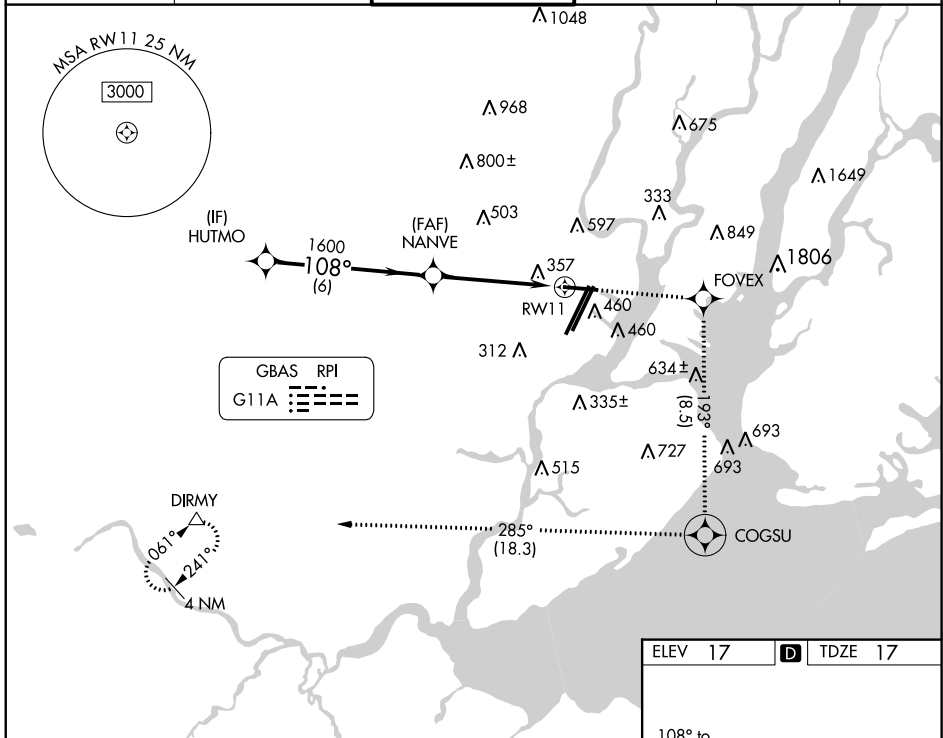
GBAS CH 21905 G11A	APP CRS 108°	Rwy ldg TDZE 17 Apt Elev 17	6726
--	------------------------	---	-------------

GLS RWY 11

NEWARK LIBERTY INTL (EWR)

RNP APCH - GPS.	MISSED APPROACH: Climb to 3000 direct FOVEX and on track 193° to COGSU and right turn on track 285° to DIRMY and hold.
<p>▼ Rwy 11 helicopter visibility reduction below RVR 4000 NA.</p> <p>▲ NA Autopilot coupled approach NA below 308.</p>	

D-ATIS 115.7 134.825	NEW YORK APP CON 128.55 379.9	NEWARK TOWER 118.3 257.6	GND CON 121.8	CLNC DEL 118.85	CPDLC
--------------------------------	---	------------------------------------	-------------------------	---------------------------	-------



NE-2, 16 JUN 2022 to 14 JUL 2022

NE-2, 16 JUN 2022 to 14 JUL 2022