

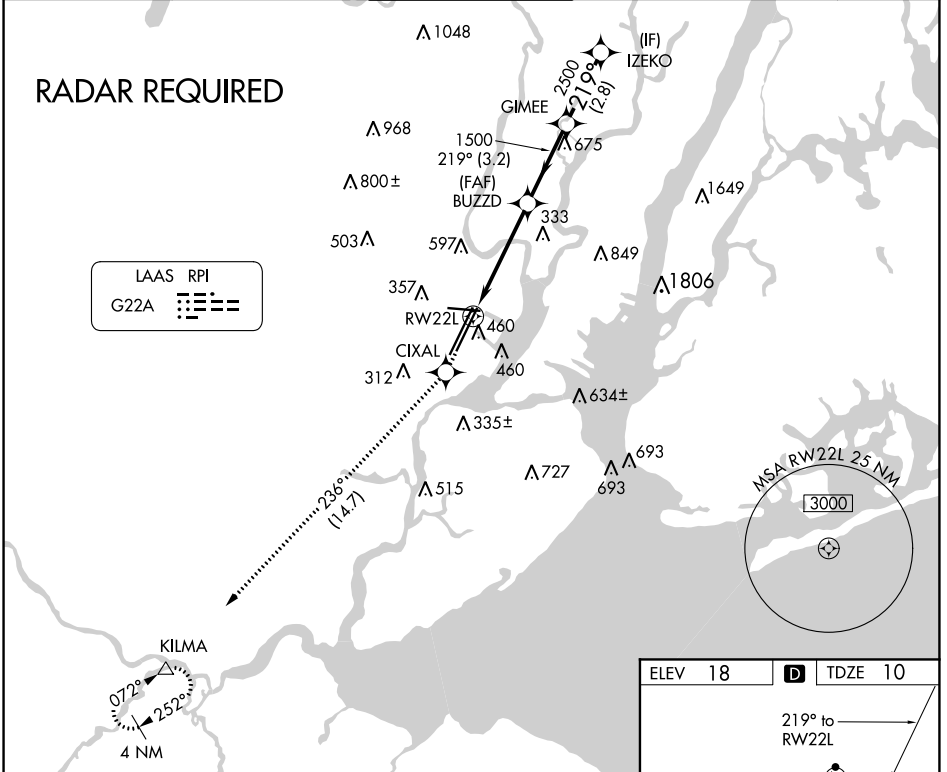
LAAS CH 21494 G22A	APP CRS 219°	Rwy Idg 8207 TDZE 10 Apt Elev 18
--	------------------------	---

GLS RWY 22L

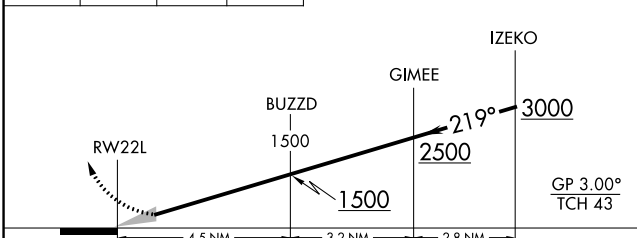
NEWARK LIBERTY INTL (EWR)

	GPS Required. For inoperative MALS increase GLS all Cats visibility to RVR 4000. DME/DME RNP-0.3 NA. Autopilot coupled approach NA below 210.		MISSED APPROACH: Climb to 3000 direct CIXAL and on track 236° to KILMA and hold.

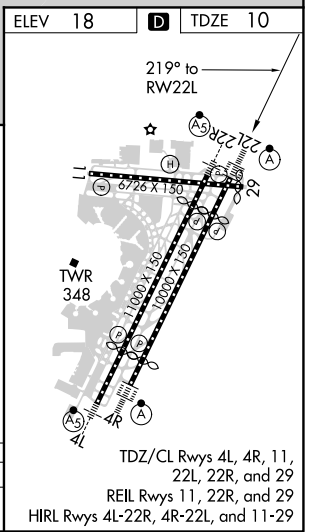
D-ATIS 115.7 134.825	NEW YORK APP CON 128.55 379.9	NEWARK TOWER 118.3 257.6	GND CON 121.8	CLNC DEL 118.85	CPDLC
--------------------------------	---	------------------------------------	-------------------------	---------------------------	-------



3000	CIXAL	Ir 236°	KILMA	VGSI and GLS glidepath not coincident (VGSI Angle 3.00/TCH 60).
------	-------	---------	-------	--



CATEGORY	A	B	C	D
GLS DA	210/18 200 (200-1/2)			



GLS RWY 22L

NE-2, 16 JUN 2022 to 14 JUL 2022

NE-2, 16 JUN 2022 to 14 JUL 2022