

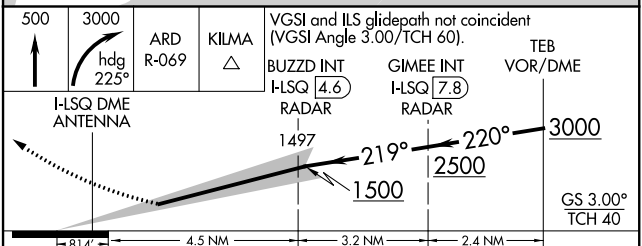
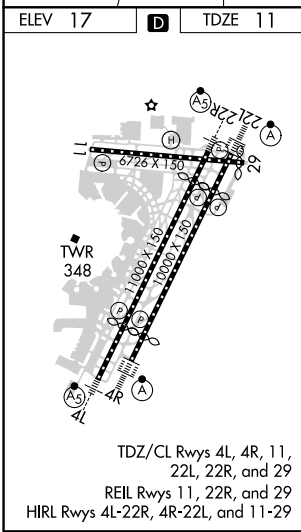
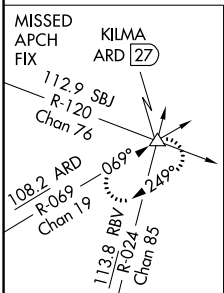
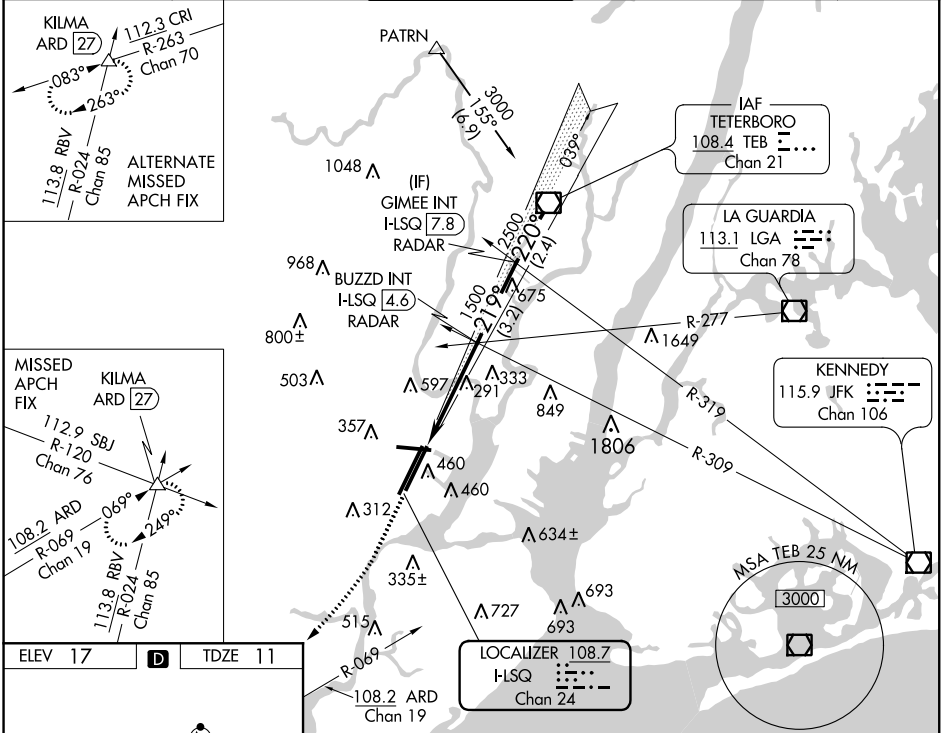
| | | | |
|----------------|-------------|----------|-------------|
| LOC/DME I-LSQ | APP CRS | Rwy Idg | 8207 |
| 108.7 | 219° | TDZE | 11 |
| Chan 24 | | Apt Elev | 17 |

ILS RWY 22L (CAT II & III)

NEWARK LIBERTY INTL (EWR)

| | |
|--|---|
| <p>▼ CAT II: RVR 1000 authorized with specific OPSPEC, MSPEC, or LOA approval and use of autoland or HUD to touchdown.</p> <p>▲ ALSF-2</p> | <p>MISSED APPROACH: Climb to 500 then climbing right turn to 3000 on heading 225° and ARD VOR/DME R-069 to KILMA INT/ARD 27 DME and hold.</p> |
|--|---|

| | | | | | |
|----------------------|---------------------|--------------------|--------------|---------------|-------|
| D-ATIS | NEW YORK APP CON | NEWARK TOWER | GND CON | CLNC DEL | CPDLC |
| 115.7 134.825 | 128.55 379.9 | 118.3 257.6 | 121.8 | 118.85 | |



| | | | | |
|-----------|-----------------------------|---|---|---|
| CATEGORY | A | B | C | D |
| S-ILS 22L | CAT II RA 102/12 100 DA 111 | | | |
| S-ILS 22L | CAT IIIa RVR 07 | | | |
| S-ILS 22L | CAT IIIb RVR 06 | | | |
| S-ILS 22L | CAT IIIc NA | | | |

CATEGORY II & III ILS - SPECIAL AIRCREW & AIRCRAFT CERTIFICATION REQUIRED

NE-2, 16 JUN 2022 to 14 JUL 2022

NE-2, 16 JUN 2022 to 14 JUL 2022