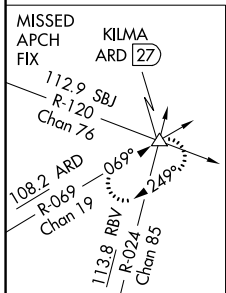
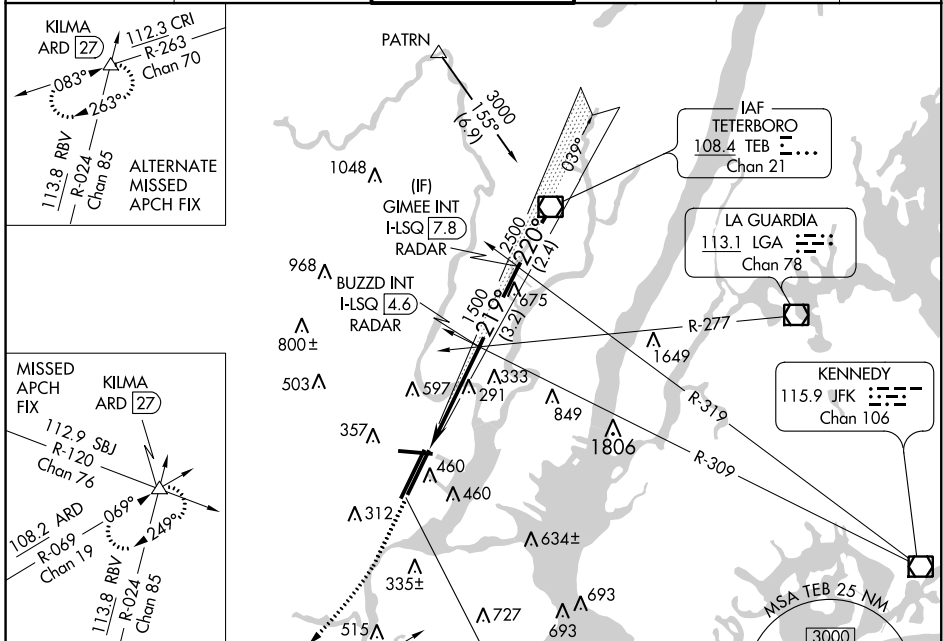


LOC/DME I-LSQ	APP CRS	Rwy Idg	<b>8207</b>
<b>108.7</b>	<b>219°</b>	TDZE	<b>11</b>
Chan <b>24</b>		Apt Elev	<b>17</b>

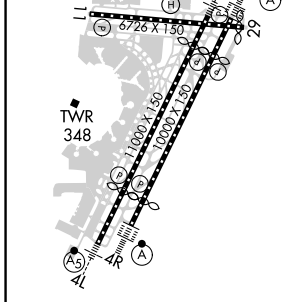
**ILS RWY 22L (SA CAT I)**  
NEWARK LIBERTY INTL (EWR)

<b>▽</b>	Requires specific OPSPEC, MSPEC, or LOA approval and use of HUD to DH.	ALSF-2	MISSED APPROACH: Climb to 500 then climbing right turn to 3000 on heading 225° and ARD VOR/DME R-069 to KILMA INT/ARD 27 DME and hold.
----------	------------------------------------------------------------------------	--------	----------------------------------------------------------------------------------------------------------------------------------------

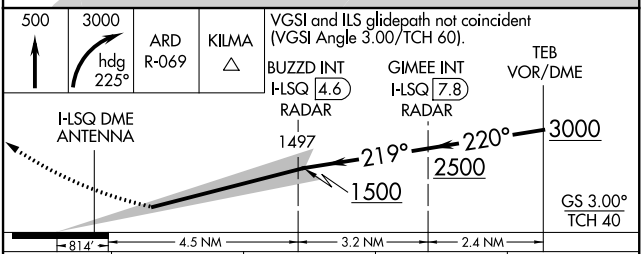
D-ATIS	NEW YORK APP CON	NEWARK TOWER	GND CON	CLNC DEL	CPDLC
<b>115.7 134.825</b>	<b>128.55 379.9</b>	<b>118.3 257.6</b>	<b>121.8</b>	<b>118.85</b>	



ELEV 17	<b>D</b>	TDZE 11
---------	----------	---------



TDZ/CL Rwys 4L, 4R, 11, 22L, 22R, and 29  
REIL Rwys 11, 22R, and 29  
HIRL Rwys 4L-22R, 4R-22L, and 11-29



CATEGORY	A	B	C	D
S-ILS 22L	RA 152/14 150 DA 161			

**SA CATEGORY I ILS - SPECIAL AIRCREW & AIRCRAFT CERTIFICATION REQUIRED**

NE-2, 16 JUN 2022 to 14 JUL 2022

NE-2, 16 JUN 2022 to 14 JUL 2022