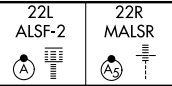


ILS or LOC RWY 22L

NEWARK LIBERTY INTL (EWR)

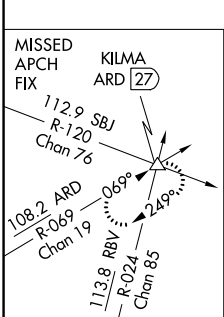
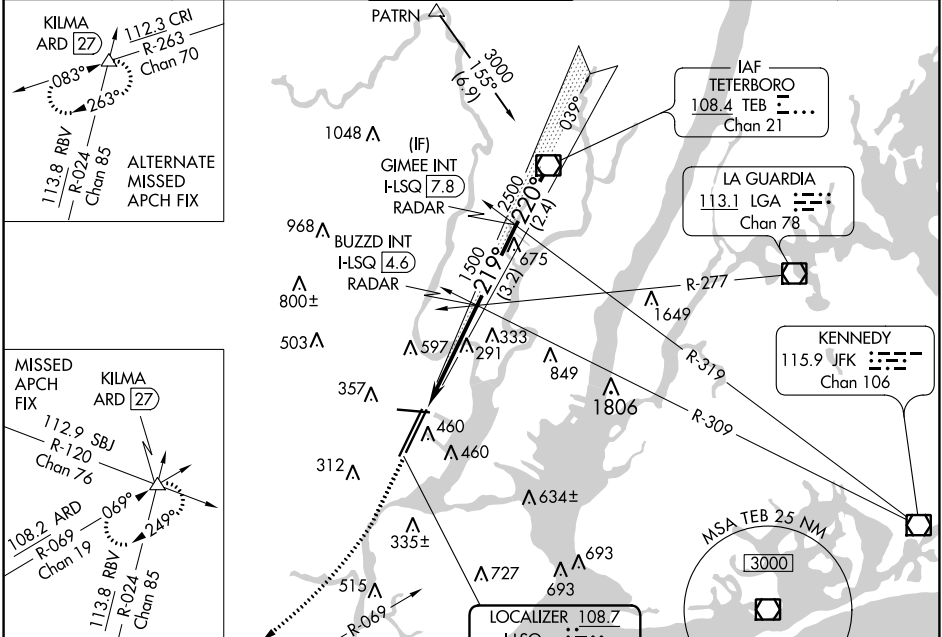
LOC/DME I-LSQ 108.7 Chan 24	APP CRS 219°	Rwy Idg TDZE Apt Elev	22L 8207 11 17	22R 9560 10 17
---	------------------------	-----------------------------	--	--

⚠ When Circling to Rwy 29 at night, operational VGSi required, remain on or above VGSi glidepath until threshold. Inop table does not apply to sidestep Rwy 22R Cats A/B.

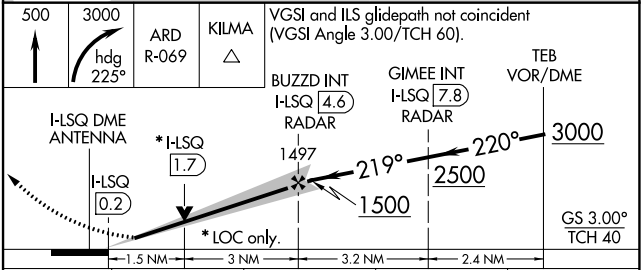
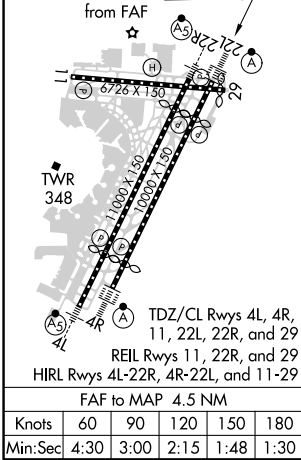


MISSED APPROACH: Climb to 500 then climbing right turn to 3000 on heading 225° and ARD VOR/DME R-069 to KILMA INT/ARD 27 DME and hold.

D-ATIS 115.7	NEW YORK APP CON 134.825	NEWARK TOWER 118.3	GND CON 121.8	CLNC DEL 118.85	CPDLC
------------------------	------------------------------------	------------------------------	-------------------------	---------------------------	-------



ELEV 17	D	TDZE 22L 11	TDZE 22R 10
---------	----------	-------------	-------------



CATEGORY	A	B	C	D
S-ILS 22L	211/18 200 (200-½)			
S-LOC 22L	560/24	549 (600-½)	560/60	549 (600-1¼)
SIDESTEP Rwy 22R	560/50	550 (600-1)	560/60 550 (600-1¼)	560-1½ 550 (600-1½)
C CIRCLING	760-1 743 (800-1)	820-1 803 (900-1)	900-2¾ 883 (900-2¾)	900-3 883 (900-3)

NE-2, 16 JUN 2022 to 14 JUL 2022

NE-2, 16 JUN 2022 to 14 JUL 2022