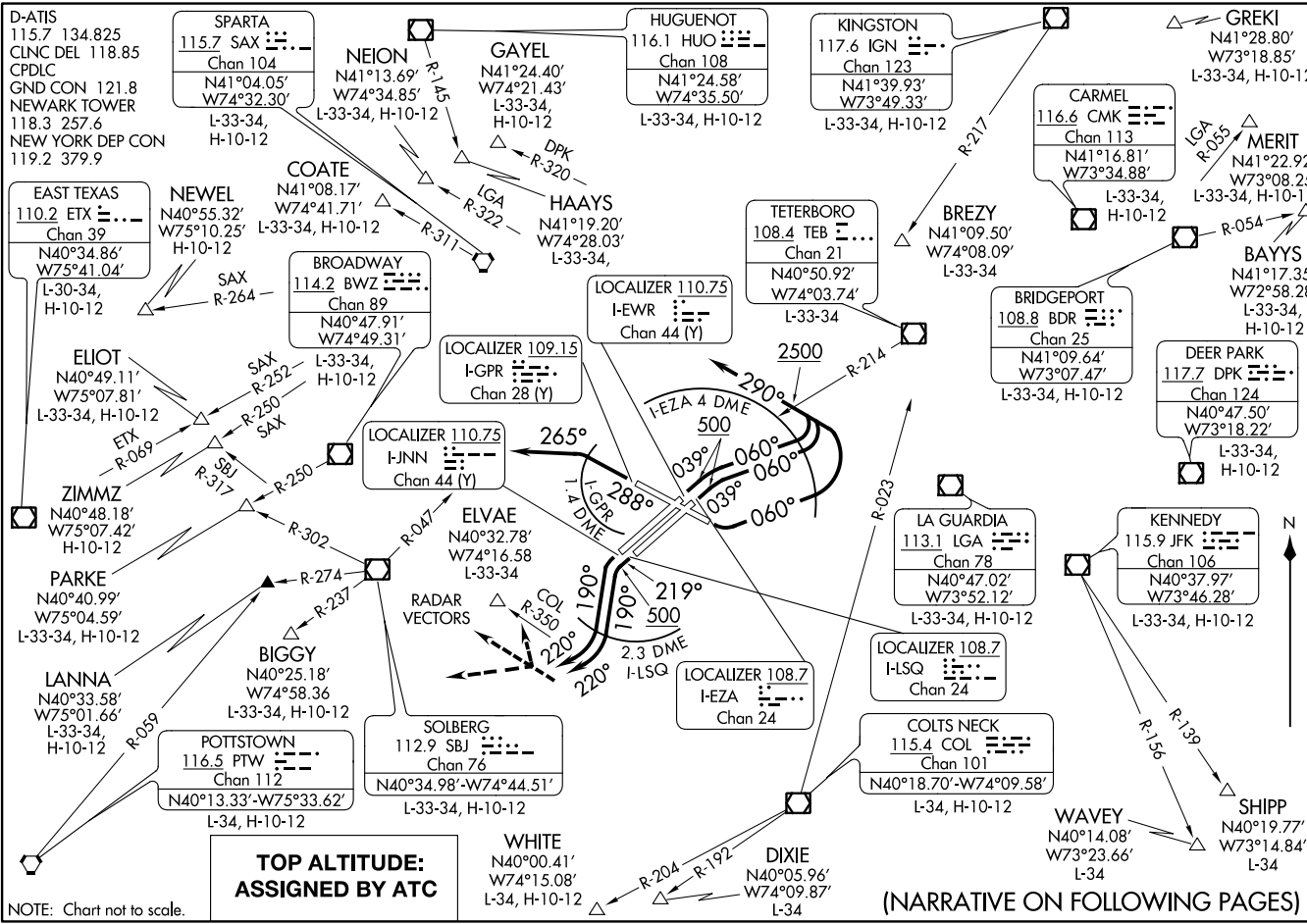


NEWARK FOUR DEPARTURE
(EW/R4, EWR) 25APR19

NEWARK FOUR DEPARTURE
(EW/R4, EWR) 20254

A1-285 (FAA)

NEWARK LIBERTY INTL (E/WIR)
NEWARK, NEW JERSEY



NOTE: Chart not to scale.

NEWARK LIBERTY INTL (E/WIR)
NEWARK, NEW JERSEY



DEPARTURE ROUTE DESCRIPTION

TAKEOFF RUNWAY 4L/R: Climb heading 039° to 500, then climbing right turn heading 060° to I-EZA 4 DME (use I-EWR 3.6 DME when I-EZA is NA), then climbing left turn heading 290°. Cross TEB R-214 westbound at or above 2500, climb and maintain 3000, thence....

TAKEOFF RUNWAY 11: Climbing left turn heading 060° (do not proceed east of COL R-023) to I-EZA 4 DME (use I-EWR 3.6 DME when I-EZA is NA), then climbing left turn heading 290°. Cross TEB R-214 westbound at or above 2500, climb and maintain 3000, thence....

TAKEOFF RUNWAY 22L: Climb heading 219° to 500, then climbing left turn heading 190° to I-LSQ 2.3 DME (use I-JNN 2.8 DME when I-LSQ is NA), then climbing right turn heading 220°. Maintain 2500, thence....

TAKEOFF RUNWAY 22R: Climbing left turn heading 190° to I-LSQ 2.3 DME (use I-JNN 2.8 DME when I-LSQ is NA), then climbing right turn heading 220°. Maintain 2500, thence....

TAKEOFF RUNWAY 29: Climb heading 288° to I-GPR 1.4 DME, then climbing left turn heading 265°. Maintain 5000, thence....

...as per notes or on vector to assigned route/fix. Expect clearance to filed altitude/flight level ten (10) minutes after departure.

LOST COMMUNICATIONS: For aircraft proceeding to COATE, NEION, HAAYS, GAYEL, or BREZY, if radio contact lost/not established with ATC, climb to 3000' after SBJ R-047.

NOTE: Takeoff Rwy 11 obstruction, 1806' high building 6.6 miles east of DER.

NOTE: Radar and DME Required.

NOTE: Rwy 4L/R, 11 simultaneous reception of EWR ILS/DME required.

NOTE: Rwy 22L/R westbound departures expect vectors between 5 and 8 NM.

	Depart Rwy 4L/R	Depart Rwy 22L/R
DP FIX	Expect VECTORS to:	Expect VECTORS to:
BAYYS	BDR/BDR R-054	BDR/BDR R-054
BIGGY	SBJ /SBJ R-237	SBJ /SBJ R-237
BREZY	IGN R-217 to BREZY	IGN R-217 to BREZY
COATE	SAX/SAX R-311	SAX/SAX R-311
DIXIE	COL R-350/COL/COL R-192 or ELVAE/COL	COL R-350/COL/COL R-192 or ELVAE/COL
ELIOT	SAX R-252	ETX (2300L-0700L SBJ/ETX)
GAYEL	DPK R-320	DPK R-320
HAAYS	HUO	HUO
LANNA	PTW R-059	SBJ /SBJ R-274
MERIT	LGA R-055	LGA R-055
NEION	LGA R-322	LGA R-322
NEWEL	SAX/SAX R-264	SAX/SAX R-264
PARKE	BWZ R-250	SBJ /SBJ R-302
SHIPP	JFK/JFK R-139	JFK/JFK R-139
WAVEY	JFK/JFK R-156	JFK/JFK R-156
WHITE	COL R-350/COL/COL R-204 or ELVAE/COL	COL R-350/COL/COL R-204 or ELVAE/COL
ZIMMZ	SAX R-250	SBJ /SBJ R-317

NOTE: ELIOT may be accessed by all types of aircraft requesting a final altitude of 14000 or 16000.

NOTE: NEWEL may be accessed by turbojet aircraft only requesting a final altitude at or above FL180.

NOTE: ZIMMZ may be accessed by all types of aircraft requesting a final altitude at or above FL180.

(CONTINUED ON FOLLOWING PAGE)

(NOTES CONTINUED)

TAKEOFF MINIMUMS:

- Rwy 4L/R: Standard. ATC climb of 500' per NM to 2500.
- Rwy 11: Standard with minimum climb of 361' per NM to 2500.
- Rwy 22L: Standard with minimum climb of 453' per NM to 500.
- Rwy 22R: Standard with minimum climb of 459' per NM to 400.
- Rwy 29: Standard with minimum climb of 473' per NM to 500.

NE-2, 16 JUN 2022 to 14 JUL 2022

NE-2, 16 JUN 2022 to 14 JUL 2022