

PORTT FOUR DEPARTURE (RNAV)  
(PORTT4.PORTT) 29MART8

NEWARK LIBERTY INTL (E/W/R)  
NEWARK, NEW JERSEY

D-ATIS  
115.7 134.825  
CLNC DEL  
118.85  
CPDLC  
GND CON  
121.8  
NEWARK TOWER  
118.3 257.6  
NEW YORK DEP CON  
119.2 379.9

NOTE: Chart not to scale.

**TOP ALTITUDE:**  
**2500**

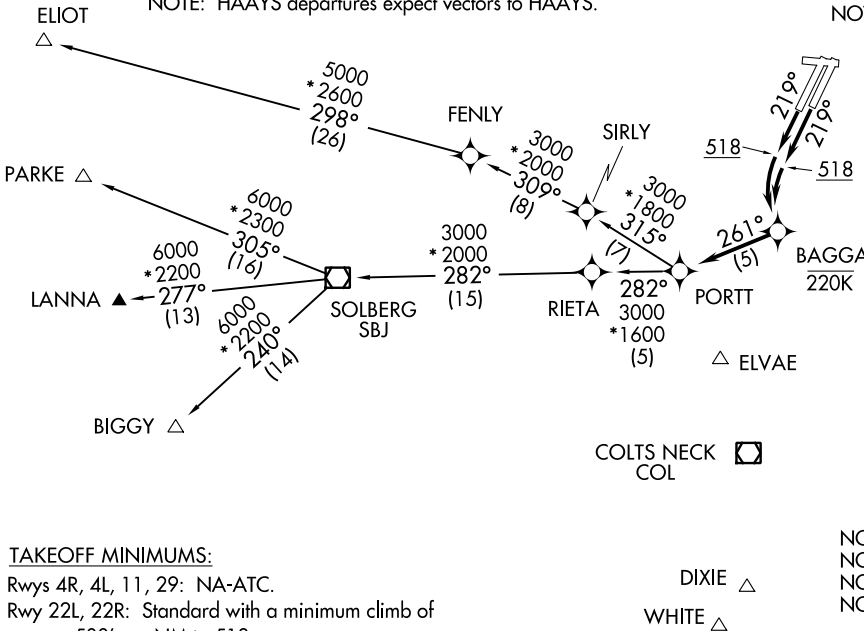
NOTE: COATE departures expect vectors to BDR VOR/DME direct COATE.  
NOTE: HAAYS departures expect vectors to HAAYS.

NOTE: BAYYS departure expect vectors to BDR VOR/DME direct BAYYS.  
NOTE: GREKI departures expect vectors to CMK VOR/DME direct GREKI.  
NOTE: MERIT departures expect vectors to LGA VOR/DME direct MERIT.

NOTE: DIXIE departures expect vectors to ELVAE direct COL VOR/DME direct DIXIE.  
NOTE: WAVEY departures expect vectors to JFK VOR/DME direct WAVEY.  
NOTE: WHITE departures expect vectors to ELVAE direct COL VOR/DME direct WHITE.

NOTE: DME/DME/IRU or GPS required.  
NOTE: RADAR required.  
NOTE: RNAV 1.  
NOTE: Do not exceed 220K until crossing BAGGA.

(NARRATIVE ON FOLLOWING PAGE)



**TAKEOFF MINIMUMS:**

Rwys 4R, 4L, 11, 29: NA-ATC.

Rwy 22L, 22R: Standard with a minimum climb of 500' per NM to 518.

(PORTT4.PORTT) 19003

A1-285 (FAA)

NEWARK LIBERTY INTL (E/W/R)  
NEWARK, NEW JERSEY

# PORTT FOUR DEPARTURE (RNAV)



## DEPARTURE ROUTE DESCRIPTION

TAKEOFF RUNWAYS 22L/22R: Climb heading 219° to 518, then left turn direct BAGGA, then on depicted route to PORTT, thence . . . .

. . . . on assigned transition, or on vectors to assigned departure fix, maintain 2500. Expect clearance to filed altitude/flight level within 10 minutes after departure.

BIGGY TRANSITION (PORTT4.BIGGY):

ELIOT TRANSITION (PORTT4.ELIOT):

LANNA TRANSITION (PORTT4.LANNA):

PARKE TRANSITION (PORTT4.PARKE):

NE-2, 16 JUN 2022 to 14 JUL 2022

NE-2, 16 JUN 2022 to 14 JUL 2022