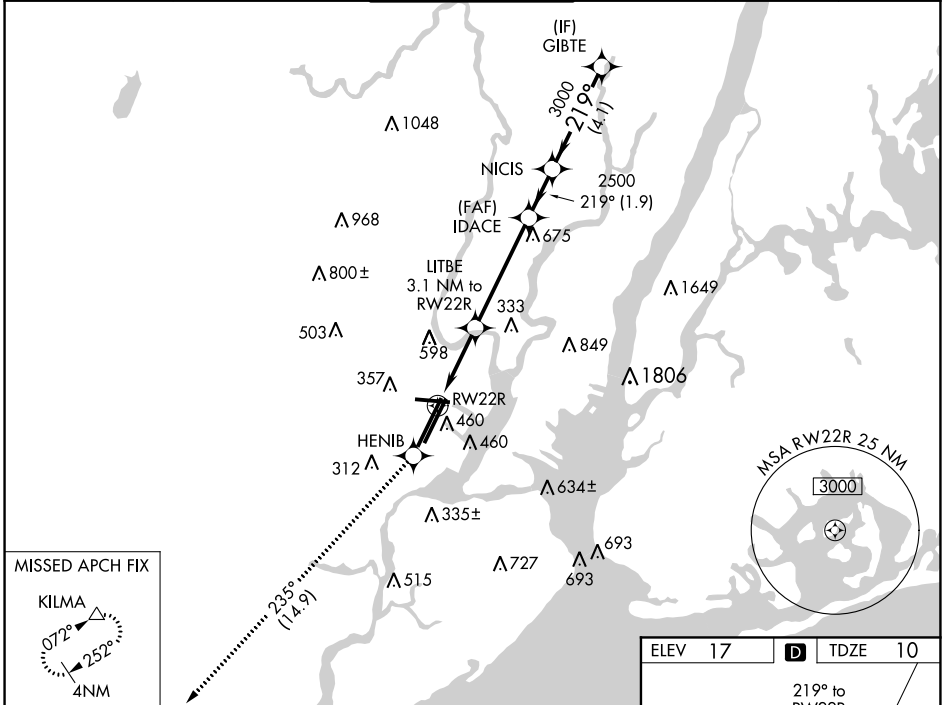


WAAS CH 77524 W22B	APP CRS 219°	Rwy Idg 9560 TDZE 10 Apt Elev 17
--	------------------------	---

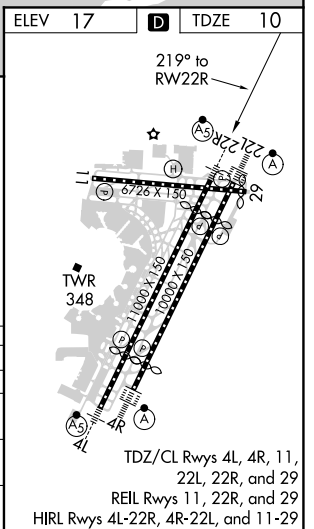
RNAV (GPS) RWY 22R

NEWARK LIBERTY INTL (EWR)

RNP APCH.		MALSRL	MISSED APPROACH: Climb to 3000 direct HENIB and on track 235° to KILMA and hold.		
<p>For inop ALS, increase LPV visibility to RVR 6000 all Cats. When Circling to Rwy 29 at night, operational VGSI required, remain on or above VGSI glidepath until threshold.</p>					
D-ATIS 115.7 134.825	NEW YORK APP CON 128.55 379.9	NEWARK TOWER 118.3 257.6	GND CON 121.8	CLNC DEL 118.85	CPDLC



3000	HENIB	KILMA	VGSI and RNAV glidepath not coincident (VGSI Angle 3.10/TCH 70).		
* LNAV only.		LITBE	IDACE	GIBTE	
<p>3.1 NM to RW22R</p> <p>* 1.7 NM to RW22L</p>		<p>219°</p> <p>3000</p>		<p>GP 3.00°</p> <p>TCH 48</p>	
<p>1.7 NM</p> <p>1.4 NM</p> <p>4.4 NM</p> <p>1.9 NM</p> <p>4.1 NM</p>		<p>1040</p> <p>2500</p>			
CATEGORY	A	B	C	D	
LPV DA	361/40		351 (400-¾)		
LNAV/VNAV DA	NA				
LNAV MDA	620/24	610 (700-½)	620/60	620-1½	
	743 (800-¼)	803 (800-¼)	610 (700-1¼)	610 (700-1½)	
CIRCLING	760-1¼	820-1¼	900-2¾	900-3	
	743 (800-¼)	803 (800-¼)	883 (900-2¾)	883 (900-3)	



RNAV (GPS) RWY 22R

NE-2, 16 JUN 2022 to 14 JUL 2022

NE-2, 16 JUN 2022 to 14 JUL 2022