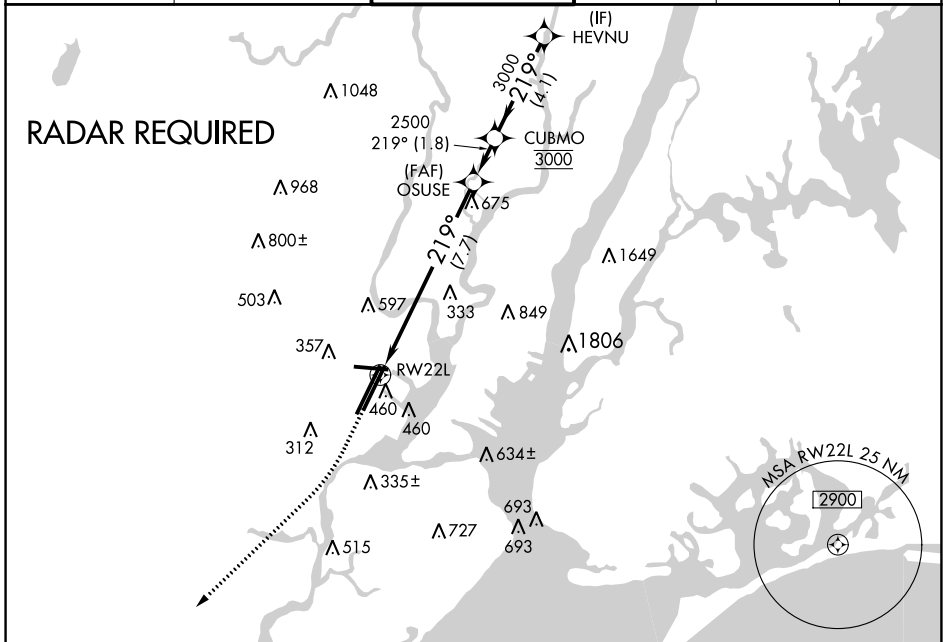


APP CRS <b>219°</b>	Rwy Idg <b>8207</b>
	TDZE <b>11</b>
	Apt Elev <b>17</b>

# RNAV (RNP) Y RWY 22L

NEWARK LIBERTY INTL (EWR)

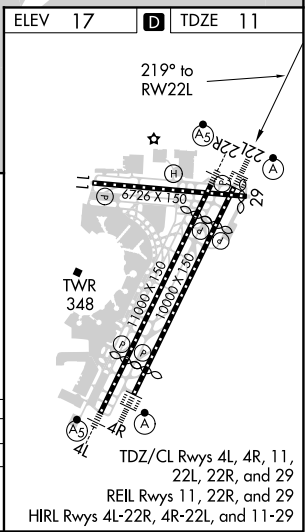
For uncompensated Baro-VNAV systems, procedure NA below -13°C (9°F) or above 54°C (130°F). GPS required.	ALSIF-2	MISSED APPROACH: Climb to 600 then climbing right turn to 3000 direct KILMA and hold.			
			D-ATIS <b>115.7 134.825</b>	NEW YORK APP CON <b>128.55 379.9</b>	NEWARK TOWER <b>118.3 257.6</b>



600 3000 KILMA VGSI and RNAV glidepath not coincident (VGSI Angle 3.00/TCH 60)

CATEGORY	A	B	C	D
RNP 0.30 DA	436/50		425 (500-1)	

**AUTHORIZATION REQUIRED**



ELEV 17 TDZE 11

TDZ/CL Rwy 4L, 4R, 11, 22L, 22R, and 29  
REIL Rwy 11, 22R, and 29  
HIRL Rwy 4L-22R, 4R-22L, and 11-29

NE-2, 16 JUN 2022 to 14 JUL 2022

NE-2, 16 JUN 2022 to 14 JUL 2022