

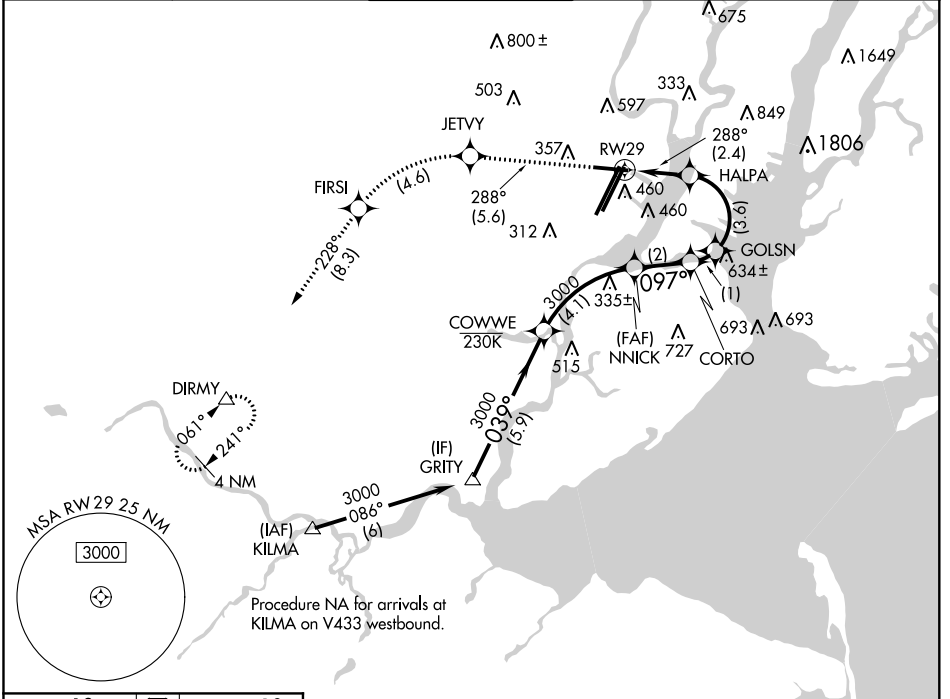
RNAV (RNP) Z RWY 29

NEWARK LIBERTY INTL (EWR)

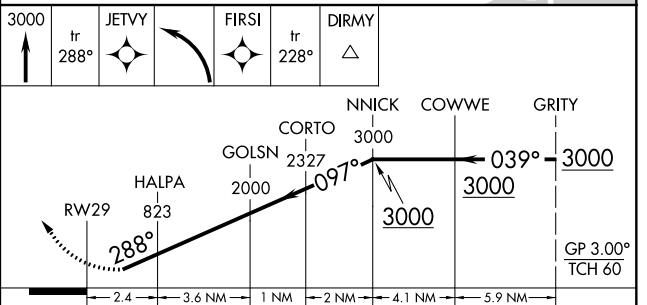
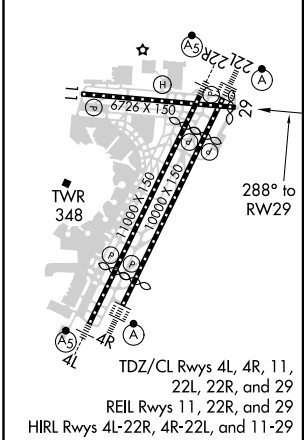
APP CRS	Rwy Idg	6502
288°	TDZE	10
	Apt Elev	18

RNP AR APCH. RF required.		MISSED APPROACH: Climb to 3000 on track 288° to JETVY and left turn to FIRSI, and on track 228° to DIRMY and hold.		
<p>▼ Straight-in Rwy 29 at night, operational VGSI required, remain on or above VGSI glidepath until threshold. For uncompensated Baro-VNAV systems, procedure NA below -14°C or above 54°C.</p> <p>▲ NA *Missed approach requires minimum climb of 340 feet per NM to 800.</p>				

D-ATIS	NEW YORK APP CON	NEWARK TOWER	GND CON	CLNC DEL	CPDLC
115.7	134.825	128.55 379.9	118.3 257.6	121.8	118.85



ELEV	18	D	TDZE	10
------	-----------	----------	------	-----------



CATEGORY	A	B	C	D
RNP 0.16 DA	466-1½	456 (500-1½)		NA
*RNP 0.30 DA	485-1½	475 (500-1½)		NA
RNP 0.30 DA	573-2	563 (600-2)		NA

AUTHORIZATION REQUIRED

RNAV (RNP) Z RWY 29

NE-2, 16 JUN 2022 to 14 JUL 2022

NE-2, 16 JUN 2022 to 14 JUL 2022