

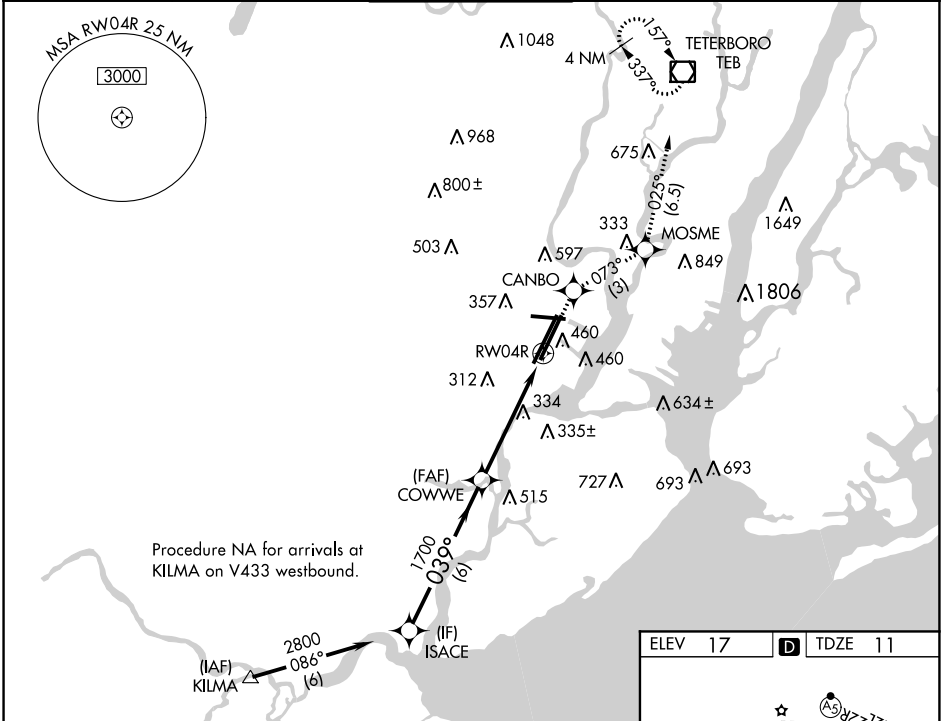
RNAV (GPS) Y RWY 4R

NEWARK LIBERTY INTL (EWR)

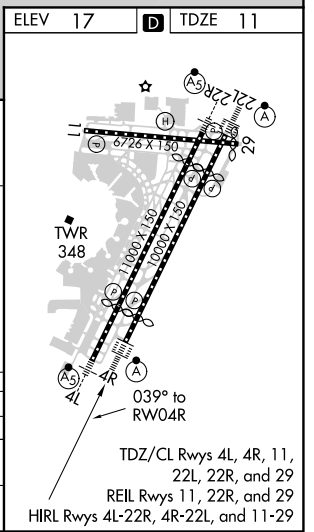
WAAS CH 60924 W04B	APP CRS 039°	Rwy Idg 8810 TDZE 11 Apt Elev 17
--	------------------------	---

RNP APCH For inop ALS, increase LPV visibility to 1¼ mile all Cats, increase LNAV Cats A/B visibility to 1 mile, and Cat C to 1¼ mile. When Circling to Rwy 29 at night, operational VGSI required, remain on or above VGSI glidepath until threshold. Rwy 4R helicopter visibility reduction below ¾ SM NA.	ALSf-2 	MISSED APPROACH: Climb to 2500 direct CANBO and on track 073° to MOSME and on track 025° to TEB VOR/DME and hold.
---	------------	---

D-ATIS 115.7 134.825	NEW YORK APP CON 128.55 379.9	NEWARK TOWER 118.3 257.6	GND CON 121.8	CLNC DEL 118.85	CPDLC
--------------------------------	---	------------------------------------	-------------------------	---------------------------	-------



* LNAV only.	2500 ↑	CANBO ✧	tr 073°	MOSME ✧	tr 025°	TEB ◻
ISACE GP 3.00° TCH 55 2800 039° 1700 COWWE 1700 RW04R *1.6 NM to RW04R VGSI and RNAV glidepath not coincident (VGSI Angle 2.95/TCH 71).						
6 NM 3.5 NM 1.6						
CATEGORY	A	B	C	D		
LPV DA	357/40		346 (400-¾)			
LNAV MDA	660/40 649 (700-¾)		660/60 649 (700-1¼)		660-1½ 649 (700-1½)	
CIRCLING	760-1 743 (800-1)		820-1 803 (900-1)		900-2¾ 883 (900-2¾)	
					900-3 883 (900-3)	



NE-2, 16 JUN 2022 to 14 JUL 2022

NE-2, 16 JUN 2022 to 14 JUL 2022