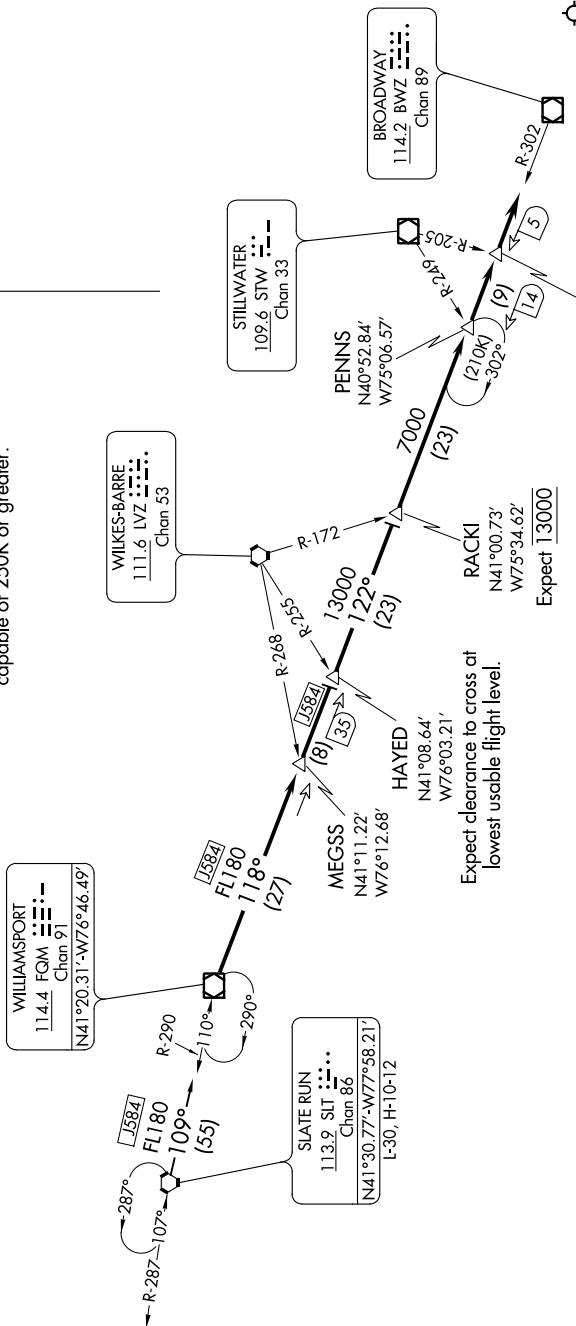


# WILLIAMSPORT THREE ARRIVAL

NE-2, 16 JUN 2022 to 14 JUL 2022

NEW YORK APP CON  
127.6 379.9  
D-AITS  
115.7 134.825

NOTE: This STAR is for aircraft capable of 250K or greater.



SWEET  
N40°49.70'  
W74°55.46'  
Expect 7000

**ARRIVAL ROUTE DESCRIPTION**

**SLATE RUN TRANSITION (SLT.FQM3):** From over SLT VORTAC on SLT R-109 to FQM VOR/DME.

From FQM VOR/DME on FQM R-118 to HAYED INT. Then on BWZ R-302 to RACKI INT. Then on BWZ R-302 to SWEET INT. Depart SWEET heading 122°. Expect vectors to final approach course.

A higher crossing altitude may be required between the hours of 2300 to 0700 local.

NOTE: Chart not to scale.

# WILLIAMSPORT THREE ARRIVAL

(FQM.FQM3) 31MAY12

NE-2, 16 JUN 2022 to 14 JUL 2022