

ILS or LOC Z RWY 14

LOC I-HIF 109.9	APCH CRS 139°	Rwy Idg 13,500 TDZE 4786 Arprt Elev 4789
---------------------------	-------------------------	---

AL-296 [USAF]

HILL AFB (KHIF)

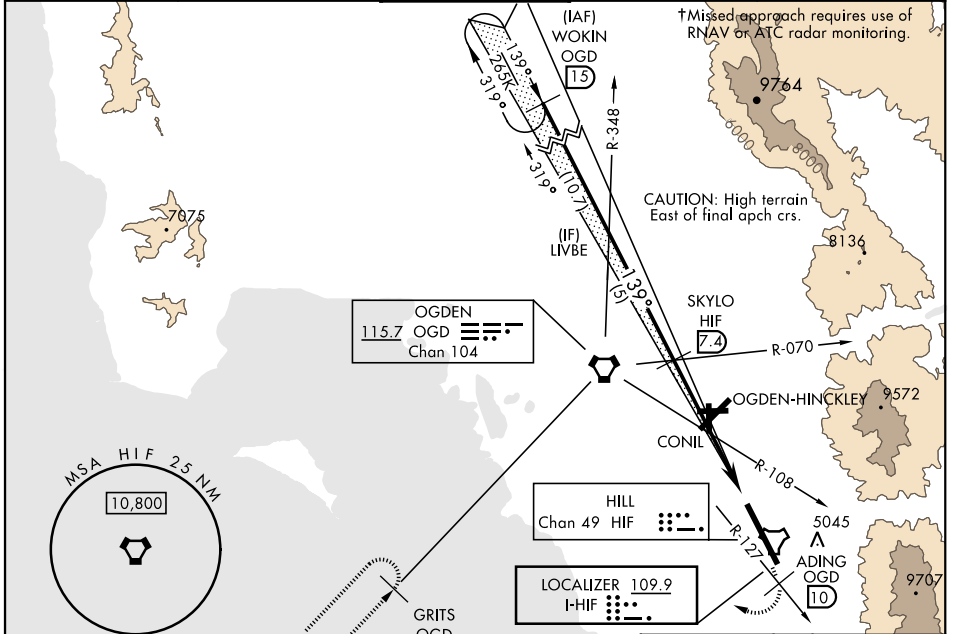
DME required.

- ▼ * When ALS inop, increase RVR to 40, vis to ¾ mile.
- ** When ALS inop, increase RVR to 55, vis to 1 mile.
- *** Circling not authorized NE of Rwy 14-32.



† MISSED APPROACH: To 5500 direct ADING, then climbing right turn to 7900, track 285° heading intercept OGD VORTAC R-209 to GRITS and hold.

ATIS 134.925 397.9	SALT LAKE CITY APP CON 121.1 319.25	TOWER 127.15 263.15	GND CON 121.6 275.8	CLNC DEL 124.1 335.8
------------------------------	---	-------------------------------	-------------------------------	--------------------------------

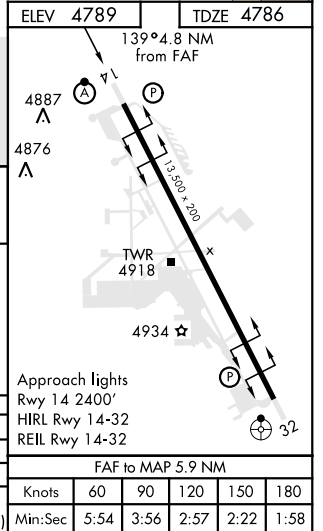
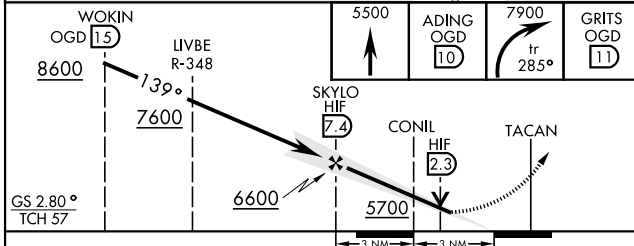


SW-4, 16 JUN 2022 to 14 JUL 2022

SW-4, 16 JUN 2022 to 14 JUL 2022

ELEV 4789	TDZE 4786
-----------	-----------

EMERG SAFE ALT 100 NM 15,600



CATEGORY	A	B	C	D	E
S-ILS 14 *	4986/24 200 (200-½)				
S-LOC 14 **	5080/24 294 (300-½)				
*** CIRCLING	5280-1 491 (500-1)	5280-1½ 491(500-½)	5340-2 551(600-2)	5880-3 1091(1100-3)	

FAF to MAP 5.9 NM					
Knots	60	90	120	150	180
Min:Sec	5:54	3:56	2:57	2:22	1:58

OGDEN, UTAH

41° 07'N-111° 58'W

HILL AFB (KHIF)

Amdt 4 24MAR22

ILS or LOC Z RWY 14