

LOC/DME I-DCI <b>110.3</b> Chan 40	APP CRS <b>350°</b>	Rwy Idg <b>8900</b> TDZE <b>4665</b> Apt Elev <b>4697</b>
--	------------------------	---

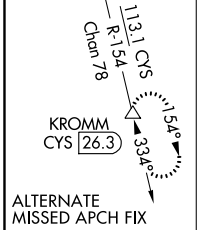
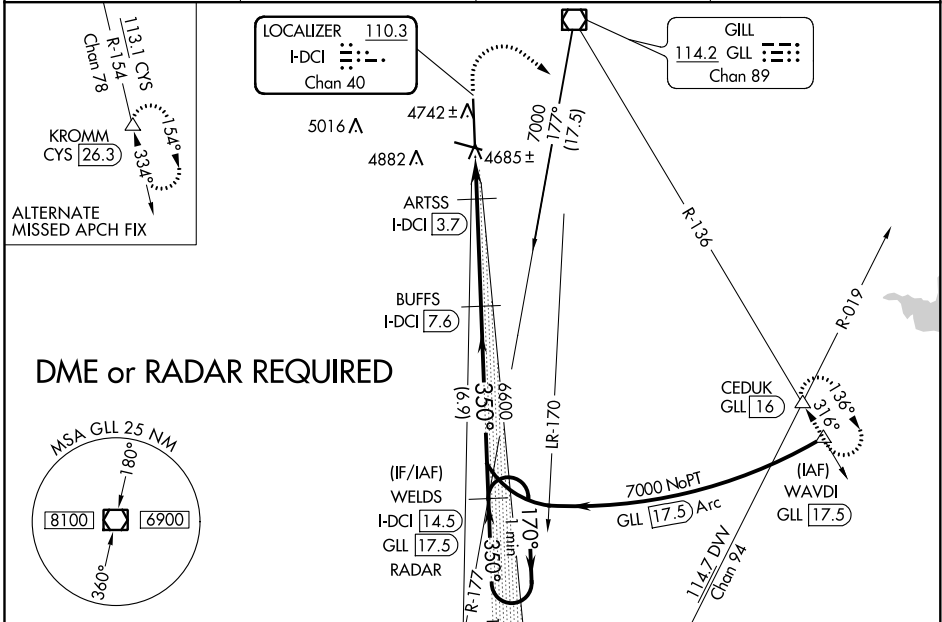
# ILS or LOC RWY 35

GREELEY-WELD COUNTY (GXY)

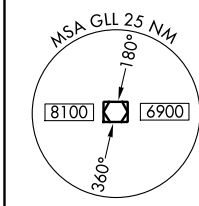
**⚠** VDP NA when using Northern Colorado Rgnl altimeter setting. When local altimeter not received, use Northern Colorado Rgnl altimeter setting and increase DA to 4950 feet and all visibilities ¼ SM; increase all MDAs 100 feet and visibility Cats C and D ½ SM.

**MISSING APPROACH:** Climb to 5300 then climbing right turn to 7000 on heading 120° and GLL VOR/DME R-136 to CEDUK INT/GLL 16 DME and hold.

AWOS-3PT <b>135.175</b>	DENVER APP CON <b>134.85 251.125</b>	CLNC DEL <b>126.65</b>	UNICOM <b>122.8 (CTAF)</b>
----------------------------	---	---------------------------	-------------------------------

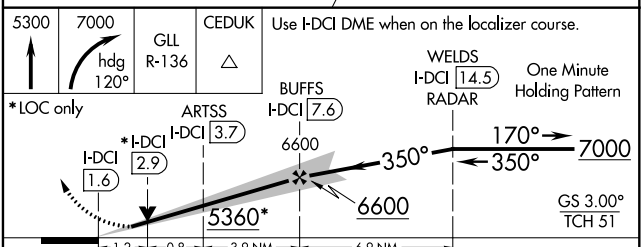
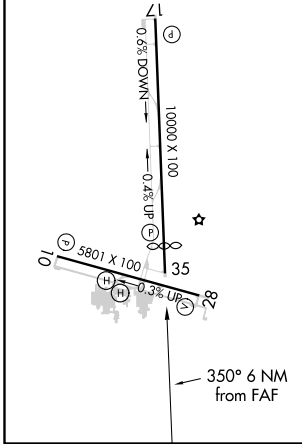


## DME or RADAR REQUIRED



ELEV <b>4697</b>	TDZE <b>4665</b>
------------------	------------------

REIL Rwy 10, 17, 28 and 35  
MIRL Rwy 10-28 and 17-35



CATEGORY	A	B	C	D
S-ILS 35	4865-¾ 200 (200-¾)			
S-LOC 35	5100-1	435 (500-1)	5100-1¼	435 (500-1¼)
<b>C</b> CIRCLING	5120-1 423 (500-1)	5200-1 503 (600-1)	5200-1½ 503 (600-1½)	5380-2¼ 683 (700-2¼)

SW-1, 16 JUN 2022 to 14 JUL 2022

SW-1, 16 JUN 2022 to 14 JUL 2022