

WAAS CH 62900 W10A	APP CRS 097°	Rwy Idg TDZE Apt Elev	5801 4661 4697
--	------------------------	-----------------------------	---

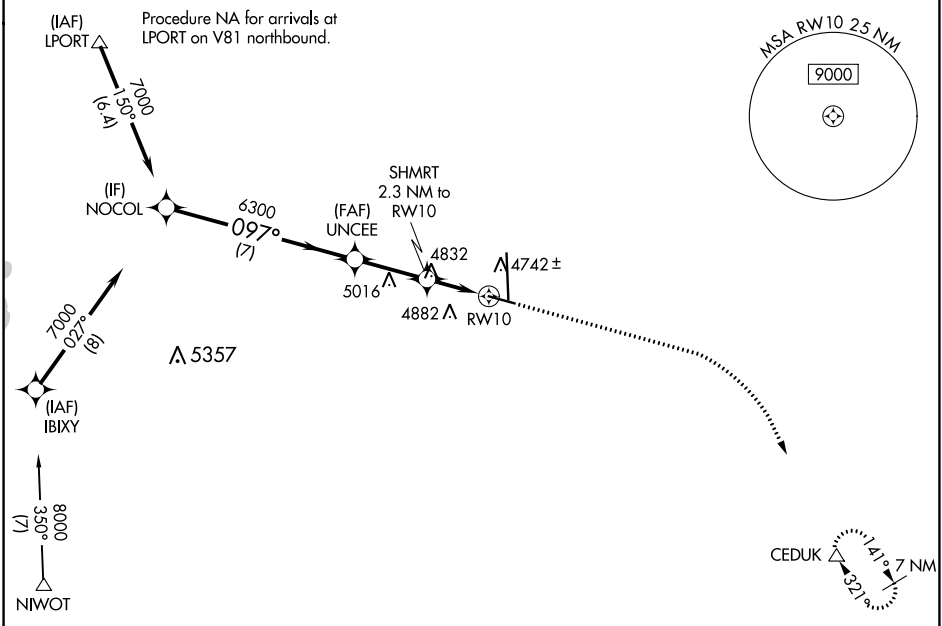
RNAV (GPS) RWY 10

GREELEY-WELD COUNTY (GXY)

RNP APCH.
 For uncompensated Baro-VNAV systems, LNAV/VNAV NA below -24°C or above 54°C.

MISSED APPROACH: Climb to 5400 then climbing right turn to 7000 direct CEDUK and hold.

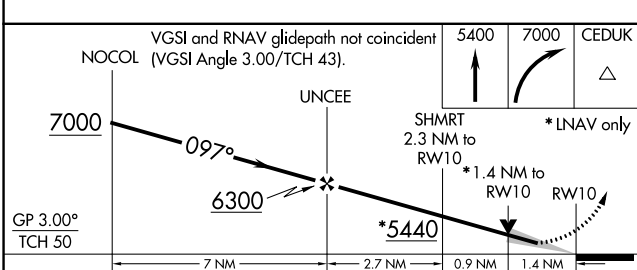
AWOS-3PT 135.175	DENVER APP CON 134.85 251.125	CLNC DEL 126.65	UNICOM 122.8 (CTAF) 0
----------------------------	---	---------------------------	---------------------------------



SW-1, 16 JUN 2022 to 14 JUL 2022

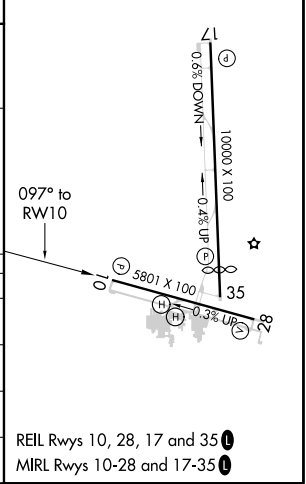
SW-1, 16 JUN 2022 to 14 JUL 2022

Procedure NA for arrivals at NIWOT on V575 southeast bound and V220 southwest bound.



CATEGORY	A	B	C	D
LPV DA		4911-3/4	250 (300-3/4)	
LNAV/VNAV DA		4920-3/4	259 (300-3/4)	
LNAV MDA	5140-1	479 (500-1)	5140-1 3/8	479 (500-1 3/8)
CIRCLING	5140-1 443 (500-1)	5200-1 503 (600-1)	5200-1 1/2 503 (600-1 1/2)	5380-2 1/4 683 (700-2 1/4)

ELEV 4697	TDZE 4661
-----------	-----------



REIL Rwy 10, 28, 17 and 35
 MIREL Rwy 10-28 and 17-35