

WAAS CH <b>72708</b> W17A	APP CRS <b>170°</b>	Rwy Idg TDZE Apt Elev	<b>10000</b> <b>4697</b> <b>4697</b>
---------------------------------	------------------------	-----------------------------	--

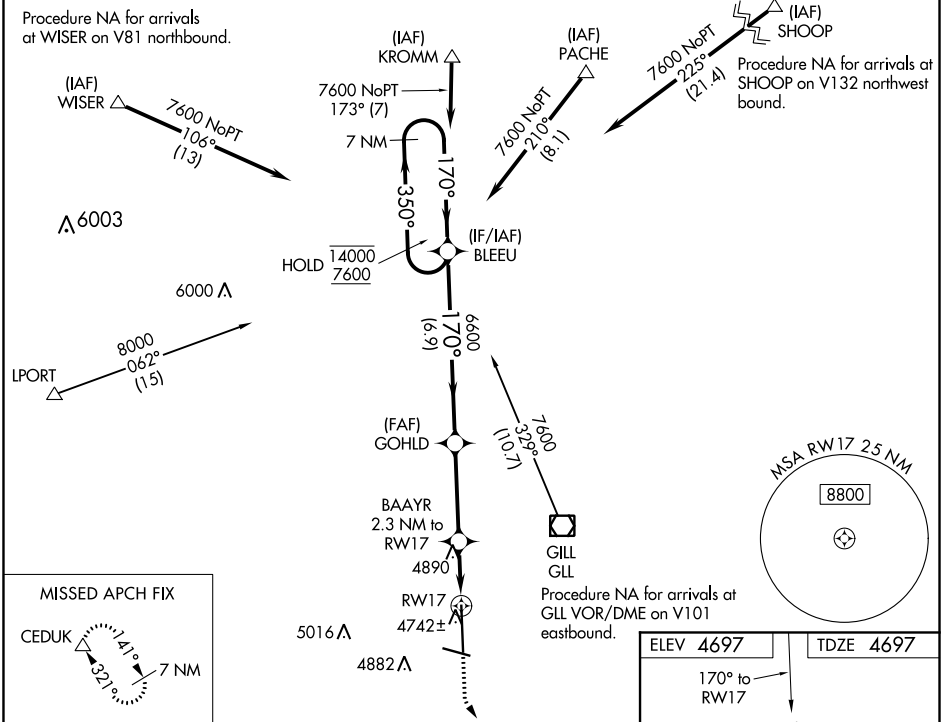
# RNAV (GPS) RWY 17

GREELEY-WELD COUNTY (GXY)

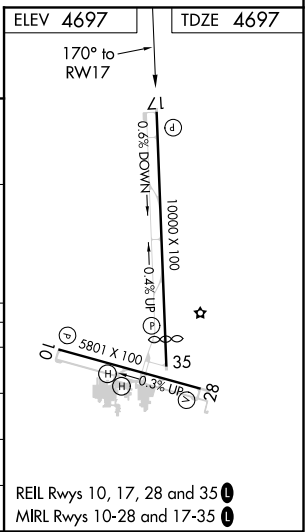
RNP APCH.  
 ⚠ For uncompensated Baro-VNAV systems, LNAV/VNAV NA below -24°C or above 54°C.

MISSED APPROACH: Climb to 5400 then climbing left turn to 7000 direct CEDUK and hold.

AWOS-3PT <b>135.175</b>	DENVER APP CON <b>134.85 251.125</b>	CLNC DEL <b>126.65</b>	UNICOM <b>122.8 (CTAF)</b>
----------------------------	---	---------------------------	-------------------------------



7 NM Holding Pattern		BLEEU	GOHLD	BAAAYR 2.3 NM to RW17	5400	7000	CEDUK
14000	← 350°	7600	→ 170°	6600	↑	↙	△
GP 3.00°		TCH 46	6600	*5460	*1.2 NM to RW17	*1.1 NM to RW17	*1.2 NM to RW17
			← 6.9 NM	← 3.5 NM			
CATEGORY	A	B	C	D			
LPV DA		4897-3/4	200 (200-3/4)				
LNAV/VNAV DA		4969-7/8	272 (300-7/8)				
LNAV MDA	5140-1	443 (500-1)	5140-1 1/2 443 (500-1 1/2)	5140-2 1/4 443 (500-2 1/4)			
CIRCLING	5140-1 443 (500-1)	5200-1 503 (600-1)	5200-1 1/2 503 (600-1 1/2)	5380-2 1/4 683 (700-2 1/4)			



SW-1, 16 JUN 2022 to 14 JUL 2022

SW-1, 16 JUN 2022 to 14 JUL 2022