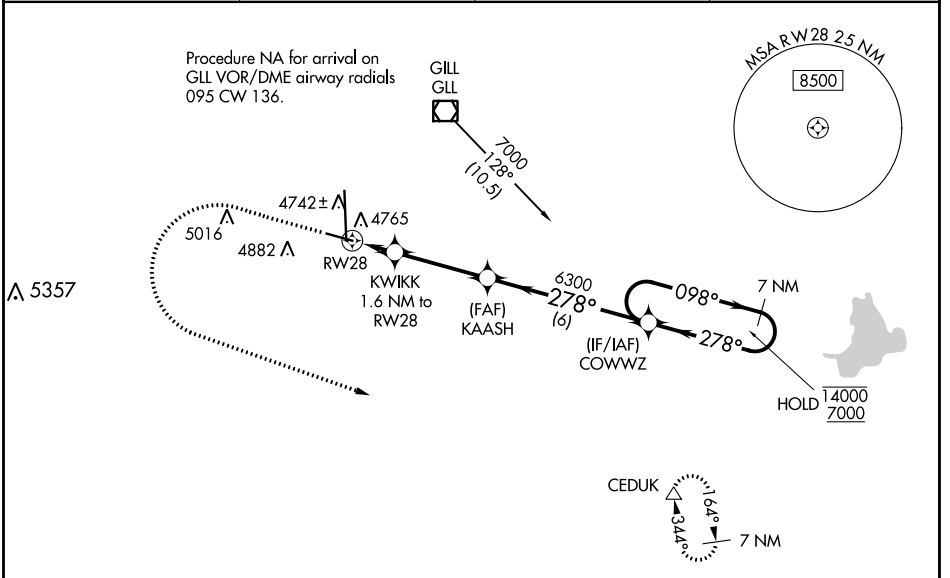


WAAS CH 86808 W28A	APP CRS 278°	Rwy Idg TDZE Apt Elev	5801 4650 4697
--	------------------------	-----------------------------	---

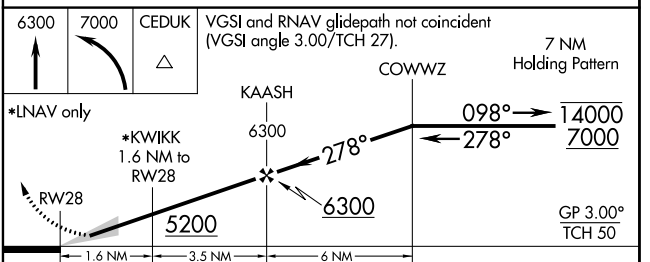
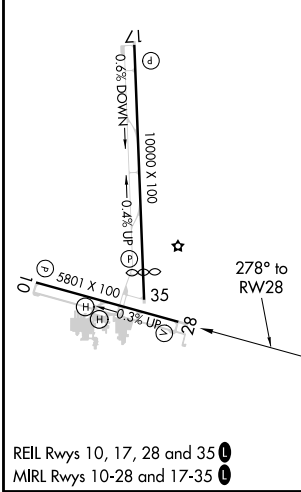
RNAV (GPS) RWY 28

GREELEY-WELD COUNTY (GXY)

RNP APCH.		MISSED APPROACH: Climb to 6300 then climbing left turn to 7000 direct CEDUK and hold.	
AWOS-3PT 135,175	DENVER APP CON 134.85 251.125	CLNC DEL 126.65	UNICOM 122.8 (CTAF) 0



ELEV 4697	TDZE 4650
-----------	-----------



CATEGORY	A	B	C	D
LPV DA	4850-3/4 200 (200-3/4)			
LNAV/VNAV DA	4976-1 326 (300-1)			
LNAV MDA	5080-1	430 (400-1)	5080-1 1/4	430 (400-1 1/4)
C CIRCLING	5120-1 423 (500-1)	5200-1 503 (600-1)	5200-1 1/2 503 (600-1 1/2)	5380-2 1/4 683 (700-2 1/4)

SW-1, 16 JUN 2022 to 14 JUL 2022

SW-1, 16 JUN 2022 to 14 JUL 2022