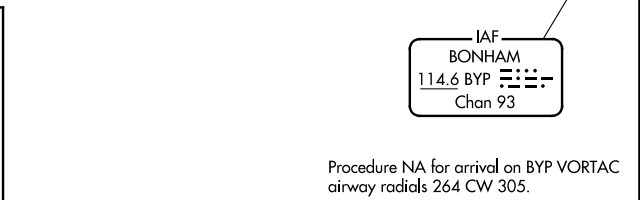
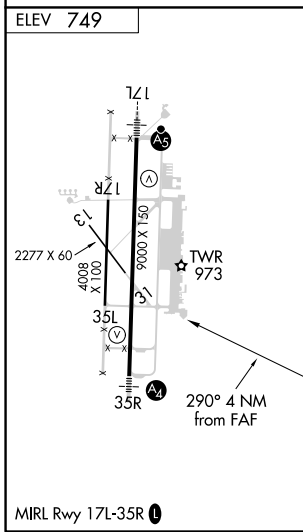
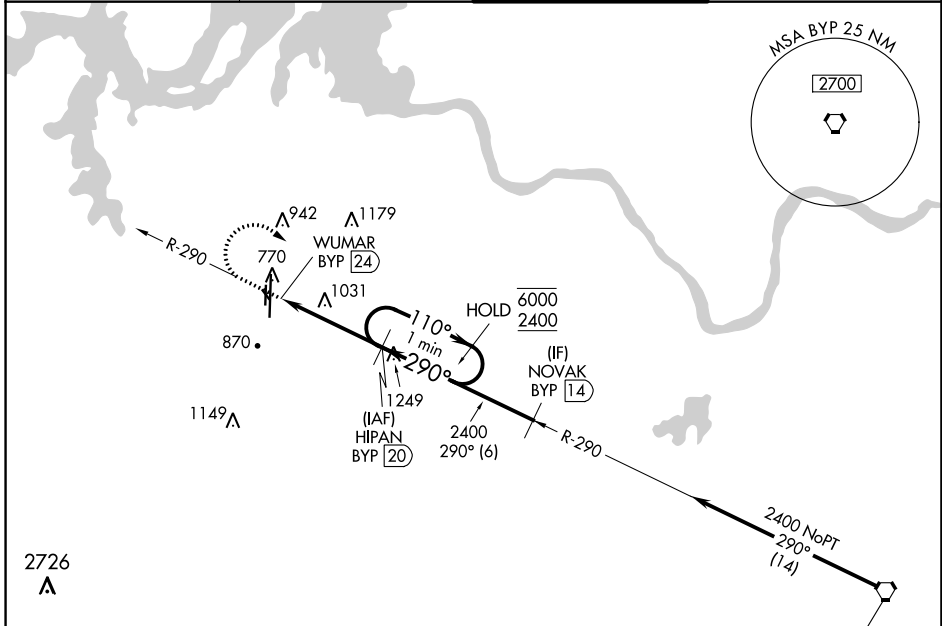


VORTAC BYP 114.6 Chan 93	APP CRS 290°	Rwy Idg TDZE Apt Elev	N/A N/A 749
--	------------------------	-----------------------------	--

VOR-A

NORTH TEXAS RGNL/PERRIN FLD (GYI)

DME required.		MISSED APPROACH: Climb to 2000 then climbing right turn to 2400 on BYP VORTAC R-290 to HIPAN/20 DME and hold.	
ATIS 118.775	FORT WORTH CENTER 124.75 323.0	NORTH TEXAS TOWER ★ 120.575 (CTAF) 233.7	GND CON 124.125



2000	2400	BYP R-290	HIPAN BYP 20	HIPAN BYP 20	One Minute Holding Pattern
<p>WUMAR BYP 24</p> <p>4 NM</p>					

CATEGORY	A	B	C	D
C CIRCLING	1340-1	591 (600-1)	1400-1¾ 651 (700-1¾)	1540-2½ 791 (800-2½)

VOR-A

SC-2, 16 JUN 2022 to 14 JUL 2022

SC-2, 16 JUN 2022 to 14 JUL 2022