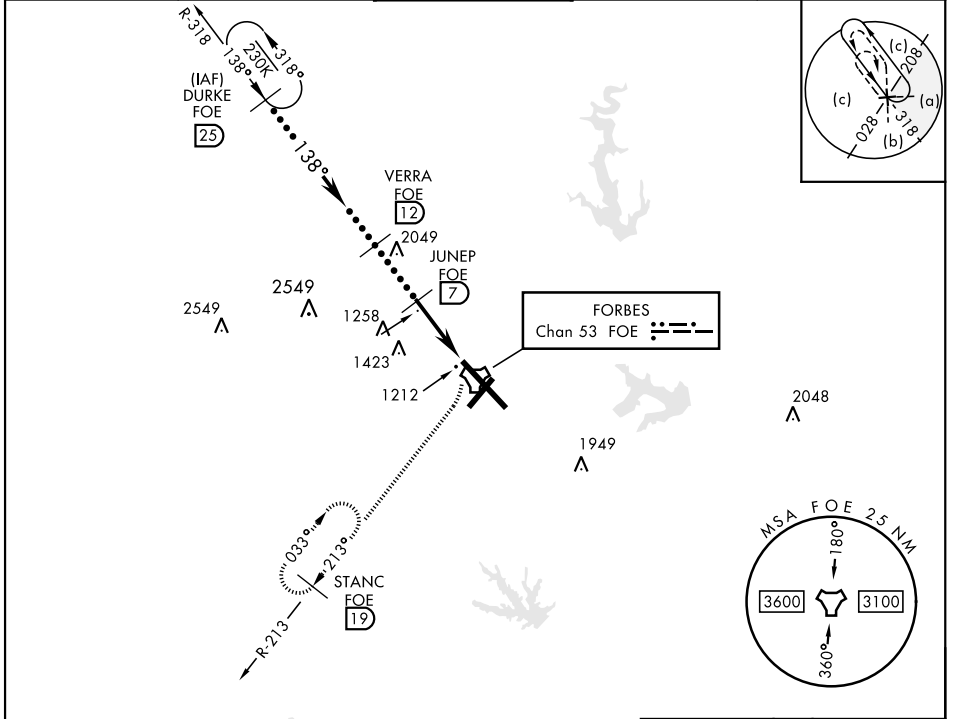


# HI-TACAN RWY 13

TACAN Chan <b>53</b>	FOE	APCH CRS <b>138°</b>	Rwy ldg <b>12,803</b> TDZE <b>1066</b> Arprt Elev <b>1078</b>	AL-424 [USAF]	TOPEKA RGNL (KFOE)
-------------------------	-----	-------------------------	---	---------------	--------------------

<b>▽</b> <b>▲</b> NA	<b>MALSF</b> <b>A4</b>	MISSED APPROACH: Climbing right turn to 3000 via FOE TACAN R-213 to STANC/19 DME and hold.
-------------------------	---------------------------	--

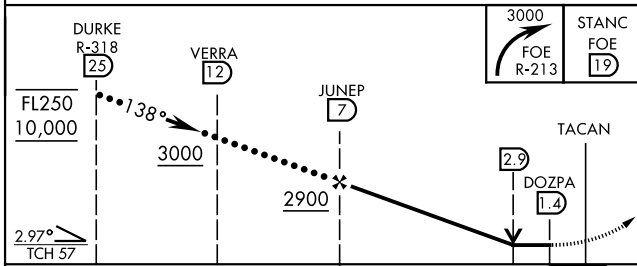
ATIS <b>128.25</b>	KANSAS CITY CENTER <b>123.8 343.7</b>	FORBES TOWER ★ <b>120.8 (CTAF) 340.2</b>	GND CON <b>118.425 275.8</b>	UNICOM <b>122.95</b>
-----------------------	--	---	---------------------------------	-------------------------



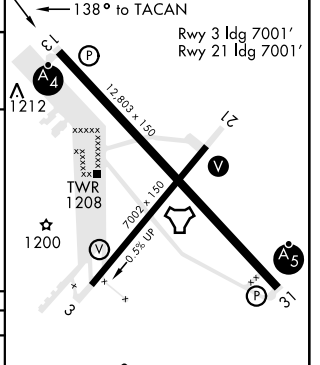
NC-2, 16 JUN 2022 to 14 JUL 2022

NC-2, 16 JUN 2022 to 14 JUL 2022

EMERG SAFE ALT 100 NM 3600



ELEV 1078	<b>D</b> TDZE 1066
-----------	--------------------



CATEGORY	C	D	E
S-13	1600-1½	534 (600-1½)	
<b>C</b> CIRCLING	1600-1½ 522 (600-1½)	1700-2 622 (700-2)	1720-2¼ 642 (700-2¼)

MIRL Rwy 3-21  
REL Rwy 3, 13, and 21  
HIRL Rwy 13-31

# HI-TACAN RWY 13