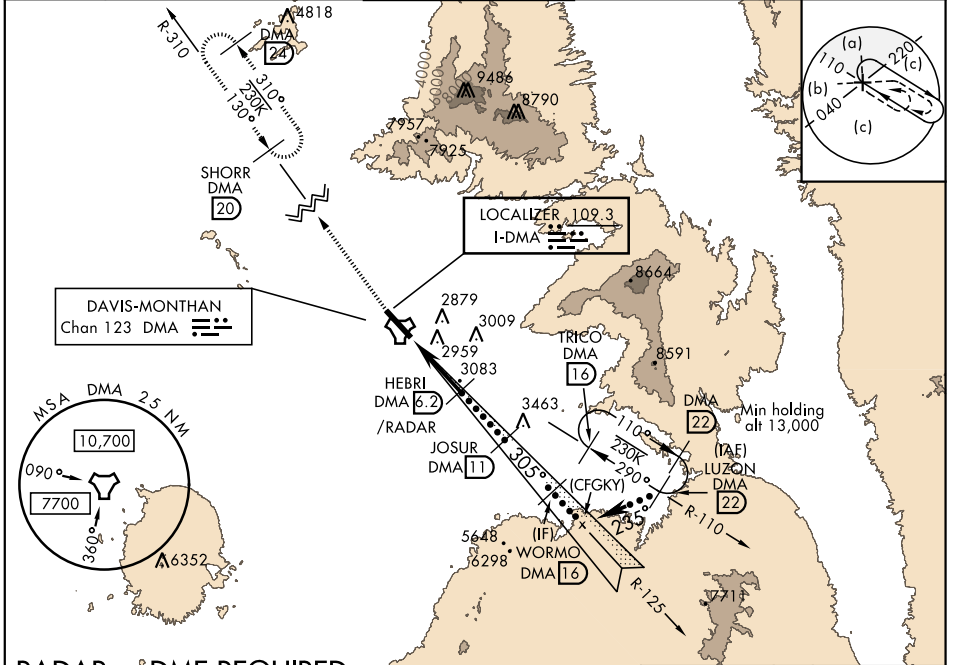


HI-ILS or LOC Z RWY 30

LOC I-DMA 109.3	APCH CRS 305°	Rwy ldg 13,643 TDZE 2704 Arprt Elev 2704	JAL-429 [USAF]	DAVIS-MONTHAN AFB (KDMA)
---------------------------	-------------------------	---	----------------	--------------------------

<p>▼ * When ALS inop, increase vis to 1 3/4 miles. ** Circling not authorized S of Rwy 12-30.</p>	<p>ALSF-1 </p>	<p>MISSED APPROACH: Climb to 7200, intercept DMA TACAN R-310 to SHORR and hold.</p>
---	--------------------	---

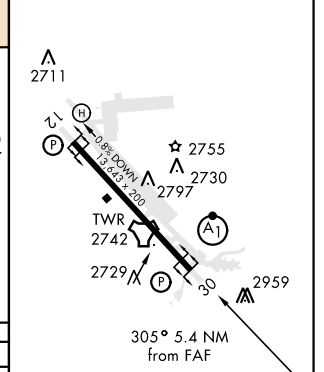
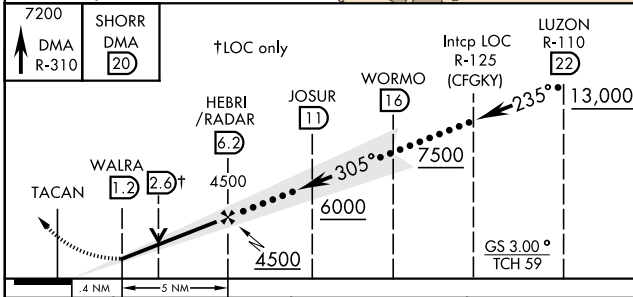
<p>ATIS ★ 270.1</p>	<p>TUCSON APP CON 066°-274° 119.4 318.1 275°-065° 125.1 269.55</p>	<p>DAVIS-MONTHAN TOWER 118.85 253.5</p>	<p>GND CON 121.8 275.8</p>	<p>CLNC DEL 121.8 275.8</p>
--------------------------------	--	--	---------------------------------------	--



SW-4, 16 JUN 2022 to 14 JUL 2022

RADAR or DME REQUIRED

EMERG SAFE ALT 100 NM 17,200



FAF to MAP 5 NM					
Knots	120	140	160	180	200
Min:Sec	2:30	2:09	1:53	1:40	1:30

HI-ILS or LOC Z RWY 30