

# HI-TACAN Z RWY 30

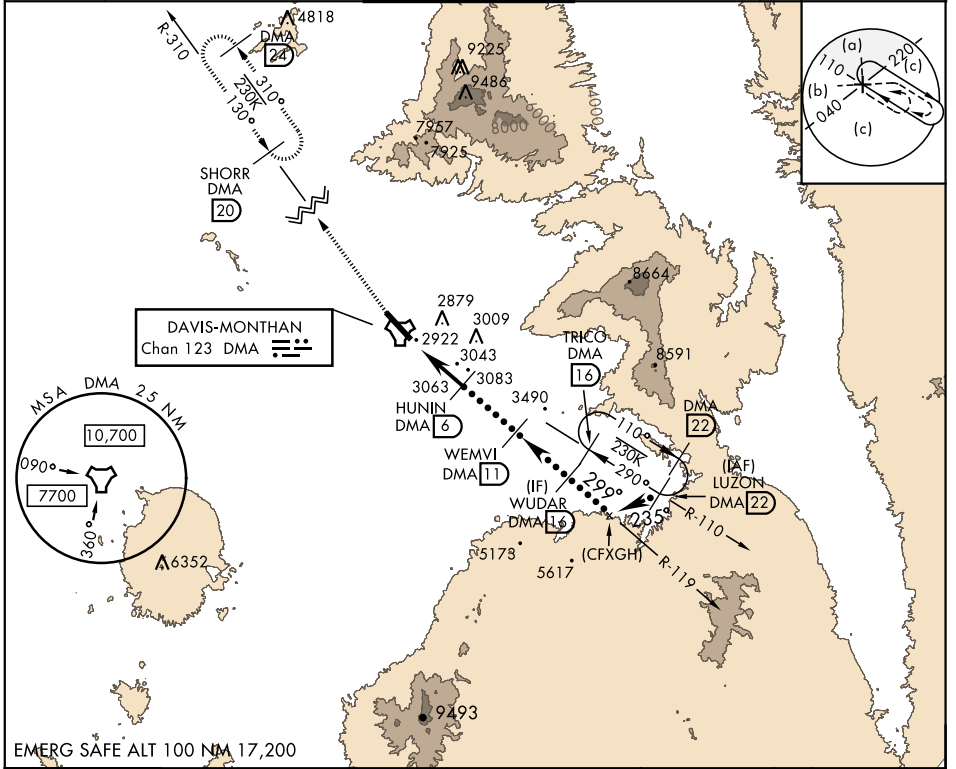
TACAN DMA Chan <b>123</b>	APCH CRS <b>299°</b>	Rwy ldg <b>13,643</b> TDZE <b>2704</b> Arprt Elev <b>2704</b>
------------------------------	-------------------------	---

JAL-429 [USAF]

DAVIS-MONTHAN AFB (KDMA)

<p>▼ * When ALS inop, increase vis to 1 1/4 miles. ** Circling not authorized S of Rwy 12-30.</p>	<p>ALSF-1 <b>(A1)</b></p>	<p>MISSED APPROACH: Climb to 7200, intercept DMA TACAN R-310 to SHORR and hold.</p>
---	-------------------------------	---

<p>ATIS ★ <b>270.1</b></p>	<p>TUCSON APP CON 066°-274° <b>119.4 318.1</b> 275°-065° <b>125.1 269.55</b></p>	<p>DAVIS-MONTHAN TOWER <b>118.85 253.5</b></p>	<p>GND CON <b>121.8 275.8</b></p>	<p>CLNC DEL <b>121.8 275.8</b></p>
--------------------------------	--	--	---------------------------------------	--



SW-4, 16 JUN 2022 to 14 JUL 2022

SW-4, 16 JUN 2022 to 14 JUL 2022

<p>7200 DMA R-310</p>	<p>SHORR DMA 20</p>	<p>ELEV 2704</p>	<p>TDZE 2704</p>
<p>CATEGORY</p>	<p>C D E</p>		
<p>S-30 *</p>	<p>3340-1 3/4 636 (700-1 3/4)</p>		
<p>CIRCLING **</p>	<p>3340-1 3/4 636 (700-1 3/4) 3360-2 656 (700-2) 3440-2 1/2 736 (800-2 1/2)</p>		
<p>HIRL Rwy 12-30 REIL Rwy 12</p>		<p>299° to TACAN</p>	

# HI-TACAN Z RWY 30