

ILS or LOC Y RWY 12

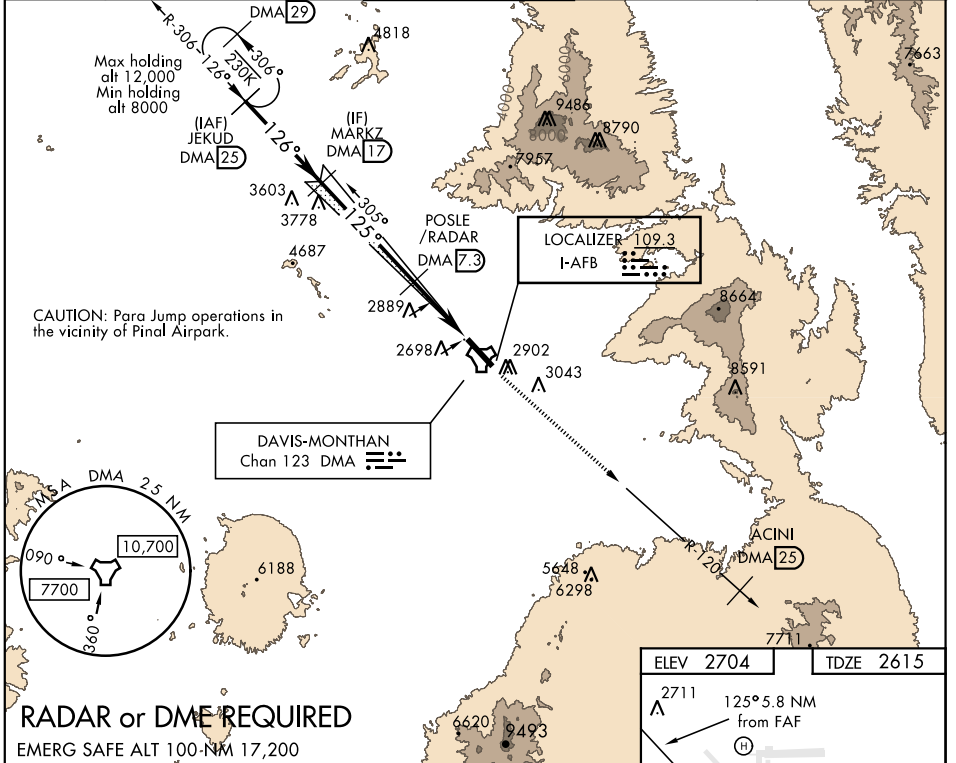
LOC I-APB 109.3	APCH CRS 125°	Rwy Ldg 13,643 TDZE 2615 Arprt Elev 2704
---------------------------	-------------------------	---

AL-429 [USAF]

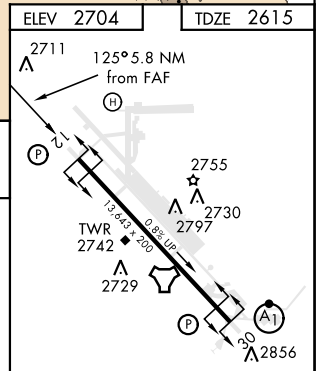
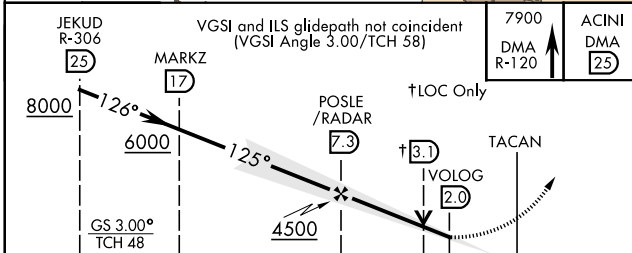
DAVIS-MONTHAN AFB (KDMA)

⚠ * Circling not authorized S of Rwy 12-30. MISSED APPROACH: Climbing to 7900 intercept DMA TACAN R-120 to ACINI. Expect RADAR vectors.

ATIS★ 270.1	TUCSON APP CON 066°-274° 119.4 318.1 275°-065° 125.1 269.55	DAVIS-MONTHAN TOWER 118.85 253.5	GND CON 121.8 275.8	CLNC DEL 121.8 275.8
-----------------------	---	--	-------------------------------	--------------------------------



RADAR or DME REQUIRED
EMERG SAFE ALT 100-NM 17,200



	ELEV 2704		TDZE 2615		
	JFKUD R-306 (25)		MARKZ (17)		
	VGSI and ILS glidepath not coincident (VGSI Angle 3.00/TCH 58)		7900 ACINI DMA (25)		
	8000		6000		
	126°		125°		
	GS 3.00° TCH 48		4500		
	POSLE/RADAR (7.3)		TACAN		
	↑LOC Only		↑(3.1)		
	5.3 NM		.5 NM		
CATEGORY	A	B	C	D	E
S-ILS 12	2865/40 250 (200-¾)				
S-LOC 12	3160/55	545 (500-1)	3160-1½	545 (500-1½)	
CIRCLING*	3220-1 516 (600-1)	3240-1 536 (600-1)	3320-1¾ 616 (700-1¾)	3360-2 656 (700-2)	3440-2½ 736(800-2½)

REIL Rwy 12	FAF to MAP 5.3 NM					
HIRL Rwy 12-30						
	Knots	60	90	120	150	180
	Min:Sec	5:18	3:32	2:39	2:07	1:46

TUCSON, ARIZONA 32°10'N-110°53'W DAVIS-MONTHAN AFB (KDMA)

Amdt 1 28MAR19

ILS or LOC Y RWY 12

SW-4, 16 JUN 2022 to 14 JUL 2022

SW-4, 16 JUN 2022 to 14 JUL 2022