

# CPTAN TWO ARRIVAL (RNAV) Transition Routes

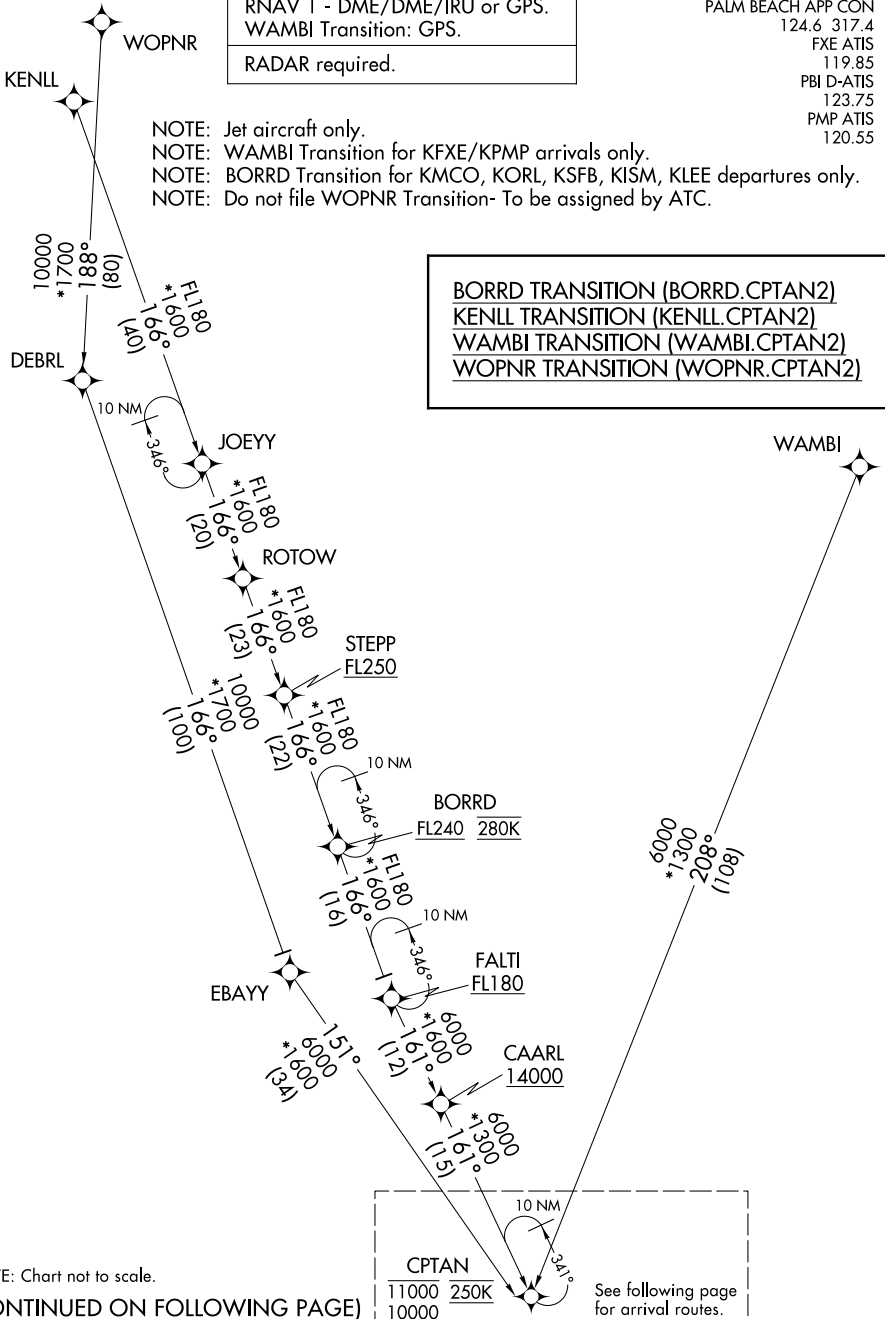
WEST PALM BEACH, FLORIDA

RNAV 1 - DME/DME/IRU or GPS. WAMBI Transition: GPS.
RADAR required.

PALM BEACH APP CON  
124.6 317.4  
FXE ATIS  
119.85  
PBI D-ATIS  
123.75  
PMP ATIS  
120.55

- NOTE: Jet aircraft only.
- NOTE: WAMBI Transition for KFYE/KPMP arrivals only.
- NOTE: BORRD Transition for KMCO, KORL, KSF, KISM, KLEE departures only.
- NOTE: Do not file WOPNR Transition- To be assigned by ATC.

BORRD TRANSITION (BORRD.CPTAN2)  
KENLL TRANSITION (KENLL.CPTAN2)  
WAMBI TRANSITION (WAMBI.CPTAN2)  
WOPNR TRANSITION (WOPNR.CPTAN2)



NOTE: Chart not to scale.

(CONTINUED ON FOLLOWING PAGE)

# CPTAN TWO ARRIVAL (RNAV) Transition Routes

WEST PALM BEACH, FLORIDA

SE-3, 16 JUN 2022 to 14 JUL 2022

SE-3, 16 JUN 2022 to 14 JUL 2022

# CPTAN TWO ARRIVAL (RNAV) Arrival Routes

WEST PALM BEACH, FLORIDA

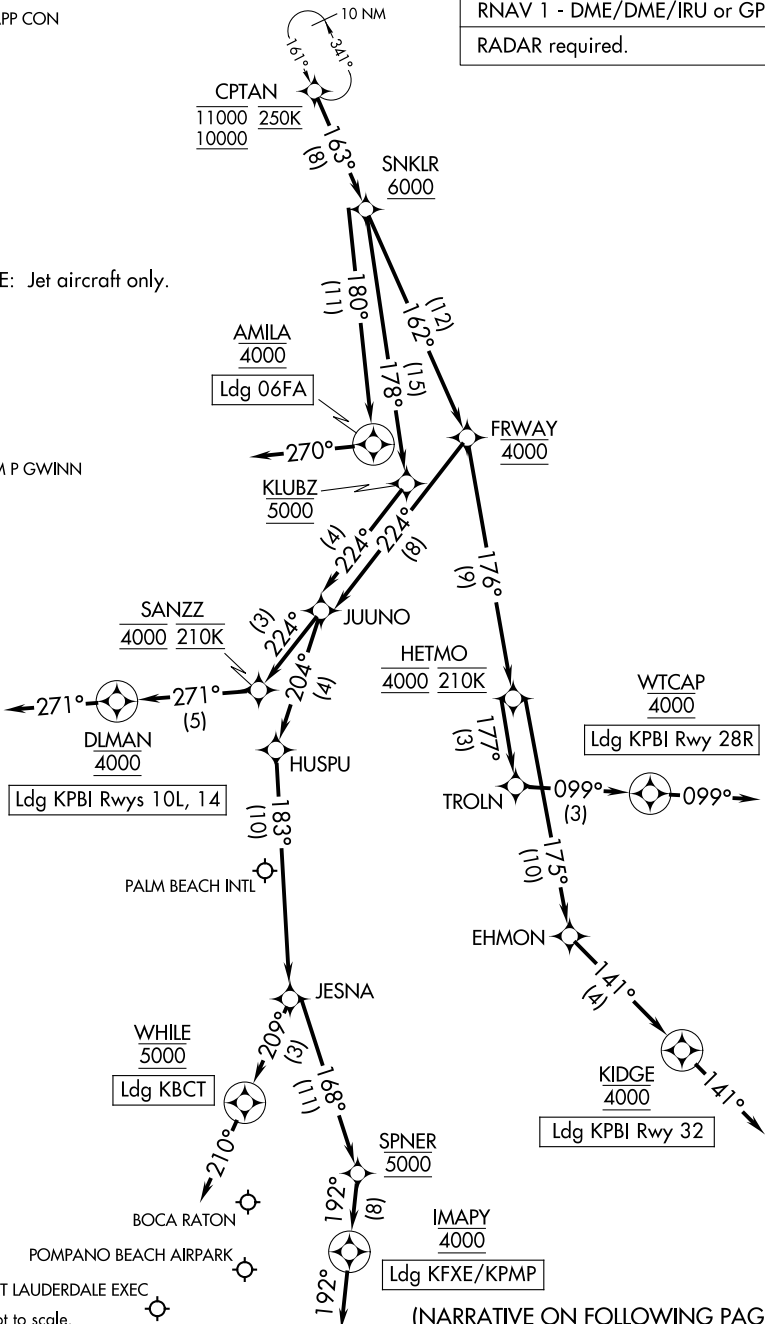
PALM BEACH APP CON  
 124.6 317.4  
 FXE ATIS  
 119.85  
 PBI D-ATIS  
 123.75  
 PMP ATIS  
 120.55

RNAV 1 - DME/DME/IRU or GPS.

RADAR required.

NOTE: Jet aircraft only.

WILLIAM P GWINN



Ldg KPBI Rwy 10L, 14

Ldg KPBI Rwy 28R

Ldg KPBI Rwy 32

Ldg KFYE/KPMP

(NARRATIVE ON FOLLOWING PAGE)

NOTE: Chart not to scale.

SE-3, 16 JUN 2022 to 14 JUL 2022

SE-3, 16 JUN 2022 to 14 JUL 2022

ARRIVAL ROUTE DESCRIPTION

KPBI: From CPTAN on track 163° to cross SNKLR at or above 6000.

LANDING KPBI RUNWAYS 10L, 14: From SNKLR on track 162° to cross FRWAY at 4000, then on track 224° to JUUNO, then on track 224° to cross SANZZ at 4000 and at 210K, then on track 271° to cross DLMAN at 4000, then on track 271°. Expect RADAR vectors to final approach course.

LANDING KPBI RUNWAY 28R: From SNKLR on track 162° to cross FRWAY at 4000, then on track 176° to cross HETMO at 4000 and at 210K, then on track 177° to TROLN, then on track 099° to cross WTCAP at 4000, then on track 099°. Expect RADAR vectors to final approach course.

LANDING KPBI RUNWAY 32: From SNKLR on track 162° to cross FRWAY at 4000, then on track 176° to cross HETMO at 4000 and at 210K, then on track 175° to EHMON, then on track 141° to cross KIDGE at 4000, then on track 141°. Expect RADAR vectors to final approach course.

LANDING 06FA: From CPTAN on track 163° to cross SNKLR at or above 6000, then on track 180° to cross AMILA at 4000, then on heading 270°. Expect RADAR vectors to final approach course.

LANDING KBCT: From CPTAN on track 163° to cross SNKLR at or above 6000, then on track 178° to cross KLUBZ at 5000, then on track 224° to JUUNO, then on track 204° to HUSPU, then on track 183° to JESNA, then on track 209° to cross WHILE at 5000, then on heading 210°. Expect RADAR vectors to final approach course.

LANDING KFXE/KPMP: From CPTAN on track 163° to cross SNKLR at or above 6000, then on track 178° to cross KLUBZ at 5000, then on track 224° to JUUNO, then on track 204° to HUSPU, then on track 183° to JESNA, then on track 168° to cross SPNER at 5000, then on track 192° to cross IMAPY at 4000, then on track 192°. Expect RADAR vectors to final approach course.

SE-3, 16 JUN 2022 to 14 JUL 2022

SE-3, 16 JUN 2022 to 14 JUL 2022