

LOC/DME I-ACV 109.5 Chan 32	APP CRS 316°	Rwy Idg TDZE Apt Elev	5846 221 222
---	------------------------	-----------------------------	---

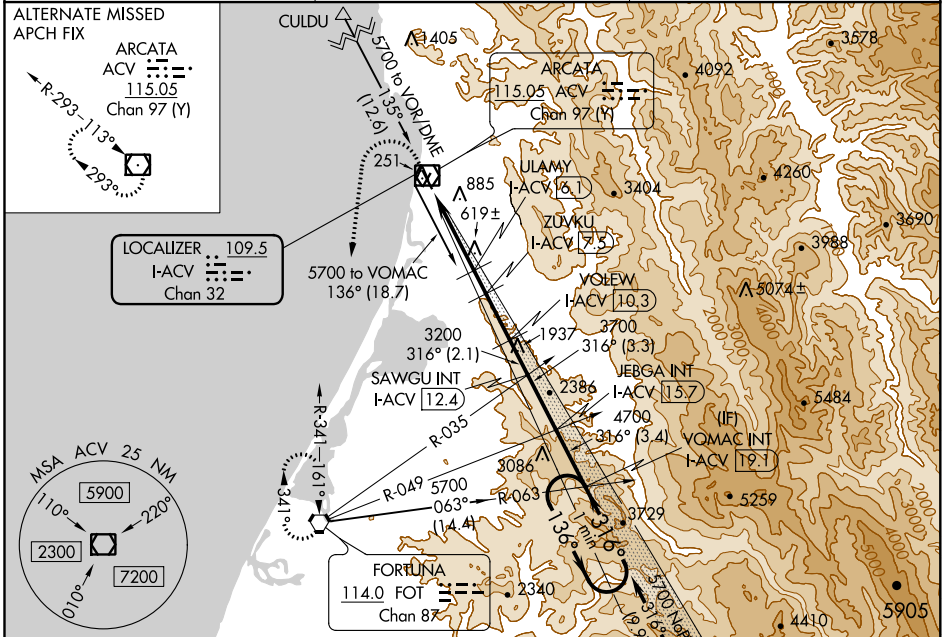
ILS or LOC RWY 32

CALIFORNIA REDWOOD COAST-HUMBOLDT COUNTY (ACV)

NA Circling NA northeast of Rwy 14-32. DME required.

MALSR MISSED APPROACH: Climb to 800 then climbing left turn to 3000 direct FOT VORTAC and hold.

ASOS 118.525	SEATTLE CENTER 124.85 306.3	UNICOM 123.0 (CTAF)
-------------------------------	--	--------------------------------------



ELEV 222	D	TDZE 221
-----------------	----------	-----------------

MIRL Rwy 1-19
HIRL Rwy 14-32
REIL Rwy 14
REIL Rwy 1

316°
9.2 NM
from FAF

800 3000 FOT Use I-ACV DME when on the localizer course. VGSI and ILS glidepath not coincident (VGSI Angle 3.00/TCH 43).

VOMAC I-ACV 19.1 One Minute Holding Pattern

***LOC only**

I-ACV 1.1, 3, 6.1, 7.5, 10.3, 12.4, 15.7

ULAMY I-ACV 6.1, ZUVKU I-ACV 7.5, VOLEW I-ACV 10.3, JEBGA I-ACV 15.7

3200 3700 4700

1860* 2320* 3200

136° → ← 316° 5700

GS 3.00° TCH 47

CATEGORY	A	B	C	D
S-ILS 32	441/18 220 (300-½)			
S-LOC 32	880/24	659 (700-½)	880-1¾	659 (700-1¾)
C CIRCLING	880-1	658 (700-1)	880-1¾	880-2 658 (700-2)

SW-2, 16 JUN 2022 to 14 JUL 2022

SW-2, 16 JUN 2022 to 14 JUL 2022