

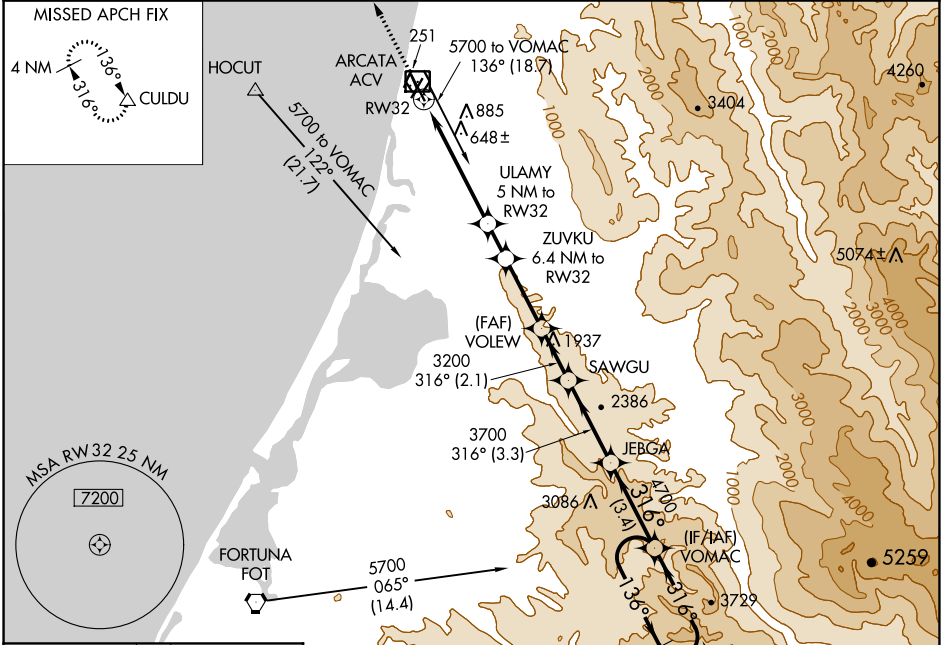
WAAS CH 63108 W32A	APP CRS 316°	Rwy Idg TDZE 221 Apt Elev 222	5846
----------------------------------------	------------------------	---------------------------------------------------	-------------

RNAV (GPS) RWY 32

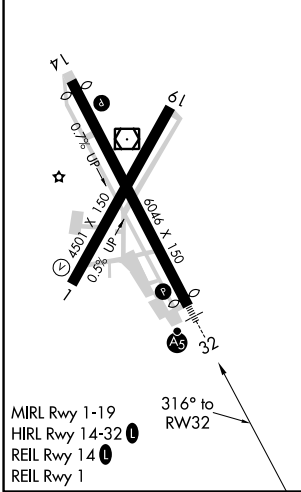
CALIFORNIA REDWOOD COAST-HUMBOLDT COUNTY (ACV)

▽ Baro-VNAV NA. Circling NA northeast of Rwy 14-32. ▲ DME/DME RNP-0.3 NA.	MALSR 	MISSED APPROACH: Climb to 3000 direct CULDU and hold.
--------------------------------------------------------------------------------------------	------------------	--------------------------------------------------------------

ASOS 118.525	SEATTLE CENTER 124.85 306.3	UNICOM 123.0 (CTAF)
-------------------------------	----------------------------------------------	--------------------------------------



ELEV 222	D	TDZE 221
----------	----------	----------



3000 CULDU	VGS1 and RNAV glidepath not coincident (VGS1 Angle 3.00/TCH 43).			
	ZUVKU	VOLEW	SAWGU	JEBGA
*LNAV only.	ULAMY 6.4 NM to RW32	3200		VOMAC 5 NM Holding Pattern
	* 2 NM to RW32	1860*	2300*	3200
		3700	4700	5700
	2 NM	3 NM	1.4 NM	2.8 NM
			2.1 NM	3.3 NM
				3.4 NM
GP 3.00° TCH 47				
CATEGORY	A	B	C	D
LPV DA	441/18		220 (300-½)	
LNAV/VNAV DA	1056-2½		835 (900-2½)	
LNAV MDA	900/24 679 (700-½)	900/40 679 (700-¾)	900-1½	679 (700-1½)
C CIRCLING	900-1 678 (700-1)		900-2 678 (700-2)	900-2¼ 678 (700-2¼)

SW-2, 16 JUN 2022 to 14 JUL 2022

SW-2, 16 JUN 2022 to 14 JUL 2022