

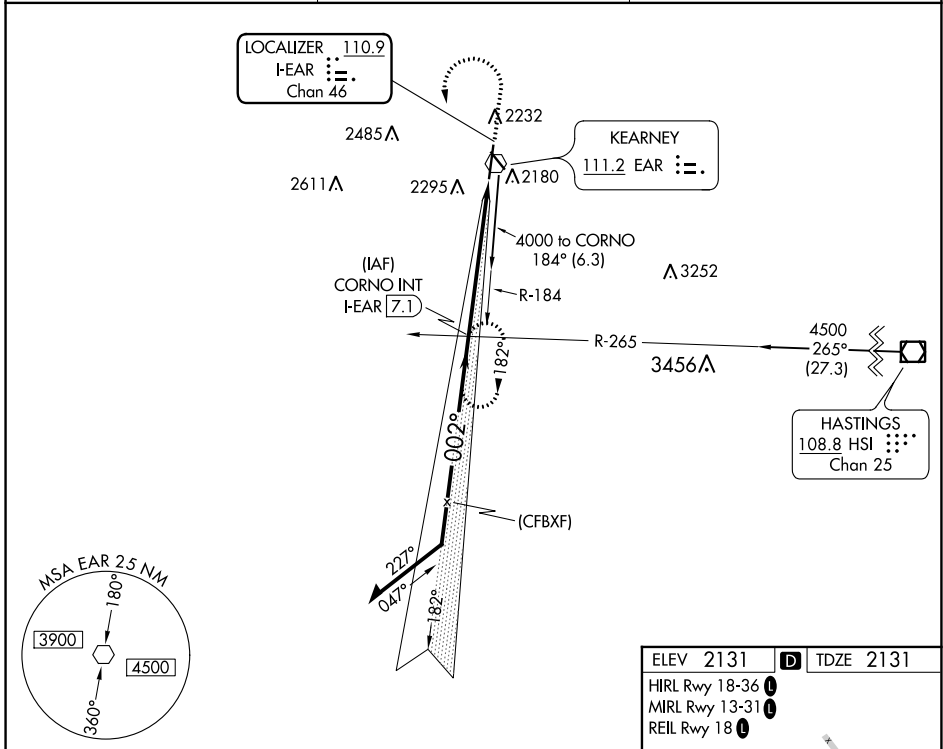
LOC/DME I- <b>EAR</b> <b>110.9</b> Chan <b>46</b>	APP CRS <b>002°</b>	Rwy Idg <b>7094</b> TDZE <b>2131</b> Apt Elev <b>2131</b>
---	------------------------	---

# ILS or LOC RWY 36

KEARNEY RGNL (EAR)

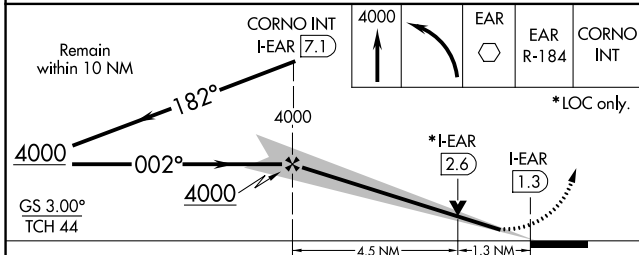
	MALSR 	MISSED APPROACH: Climb to 4000 then left turn direct EAR VOR then on EAR R-184 to CORNO INT/ I- <b>EAR</b> 7.1 DME and hold.

AWOS-3PT <b>123.875</b>	MINNEAPOLIS CENTER <b>119.4 278.8</b>	UNICOM <b>123.0 (CTAF) </b>
----------------------------	--	--------------------------------

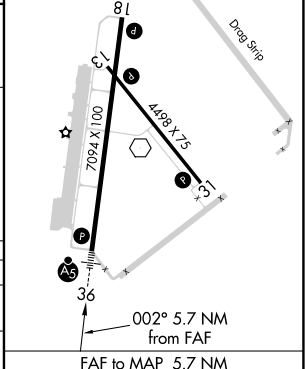


NC-2, 16 JUN 2022 to 14 JUL 2022

NC-2, 16 JUN 2022 to 14 JUL 2022



ELEV 2131		TDZE 2131
HIRL Rwy 18-36		
MIRL Rwy 13-31		
REIL Rwy 18		



CATEGORY	A	B	C	D
S-ILS 36	2331-½ 200 (200-½)			
S-LOC 36	2580-½	449 (500-½)	2580-¾	449 (500-¾)
CIRCLING	2600-1	469 (500-1)	2640-1½	2840-2¼
			509 (600-1½)	709 (800-2¼)

FAF to MAP 5.7 NM					
Knots	60	90	120	150	180
Min:Sec	5:42	3:48	2:51	2:17	1:54