

APP CRS
270°

Rwy Idg **5005**
TDZE **956**
Apt Elev **983**

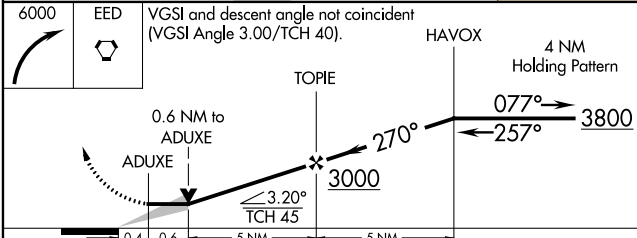
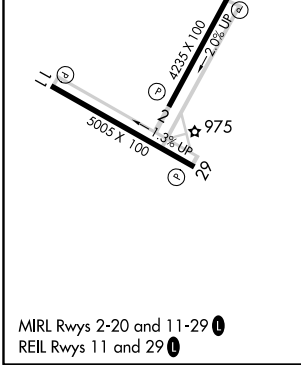
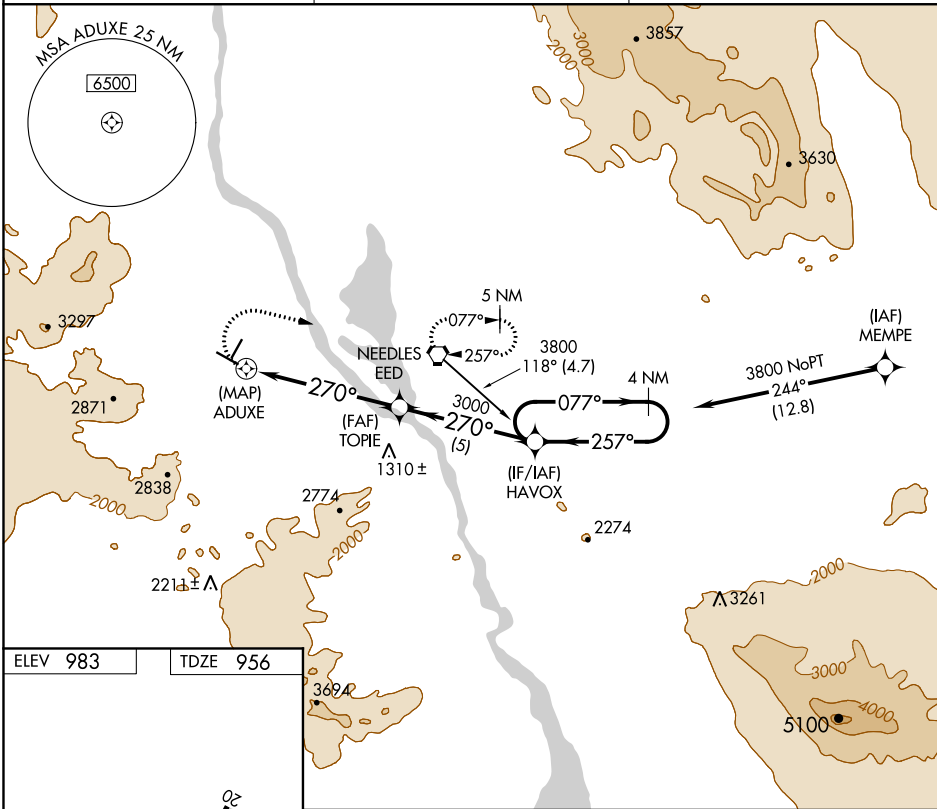
RNAV (GPS) RWY 29

NEEDLES (EED)

⚠ Straight-in minimums not authorized at night.
GPS or RNP-0.3 required. DME/DME RNP-0.3 NA.
Circling NA for Cats C and D south of Rwy 11-29.

MISSED APPROACH: Climbing right turn to 6000 direct to EED VORTAC and hold.

ASOS 128.325	LOS ANGELES CENTER 134.65 360.65	UNICOM 123.0 (CTAF) ①
------------------------	--	--



CATEGORY	A	B	C	D
LNAV MDA	1300-1 344 (400-1)			1300-1¼ 344 (400-1¼)
CIRCLING	1560-1 577 (600-1)	1680-1 697 (700-1)	1680-2 697 (700-2)	1960-3 977 (1000-3)

SW-3, 16 JUN 2022 to 14 JUL 2022

SW-3, 16 JUN 2022 to 14 JUL 2022