

ABERDEEN, MARYLAND

# RNAV (GPS) RWY 22

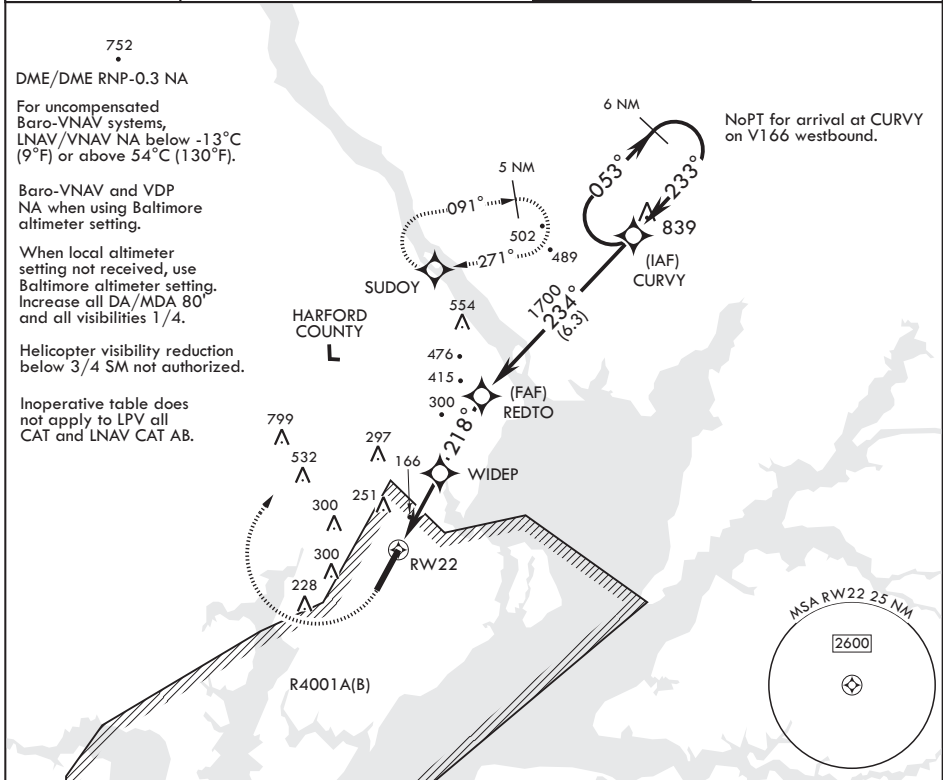
WAAS CH 70342 W22A	APCH CRS 218°	Rwy ldg TDZE Arpt Elev	7998 45 45
--------------------------	------------------	------------------------------	------------------

AL-555 (USA)

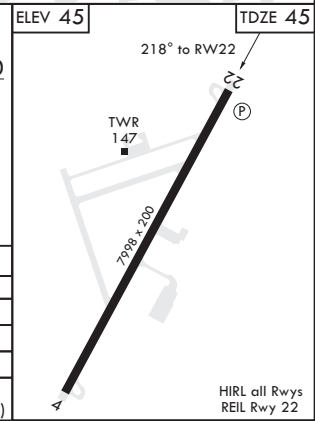
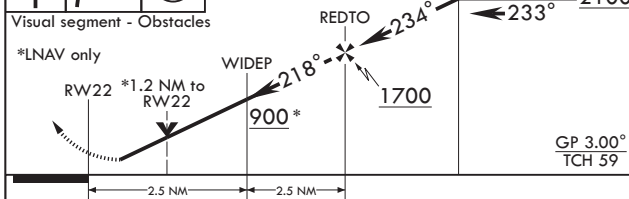
PHILLIPS AAF (ABERDEEN PROVING GROUND) (KAPG)

	MISSED APPROACH: Climb to 500, then climbing right turn to 2000 direct SUDOY and hold.
--	--

ATIS* 124.425	POTOMAC APP CON/DEP CON 125.525 291.625	TOWER* 126.15 229.6	GND CON 121.9
------------------	--	------------------------	------------------



500	2000	SUDOY	VGSI and RNAV glidepath not coincident (VGSI Angle 3.00°/TCH 49).	CURVY	ELEV 45	TDZE 45
-----	------	-------	---	-------	---------	---------



CATEGORY	A	B	C	D
LPV DA	295-1	250	(300-1)	
LNAV/VNAV DA	560-1 $\frac{3}{8}$	515	(600-1 $\frac{3}{8}$ )	
LNAV MDA	560-1 515 (600-1)		560-1 $\frac{3}{8}$ 515 (600-1 $\frac{3}{8}$ )	
CIRCLING	560-1	640-1	660-1 $\frac{3}{4}$	880-2 $\frac{3}{4}$
	515 (600-1)	595 (600-1)	615 (700-1 $\frac{3}{4}$ )	835 (900-2 $\frac{3}{4}$ )

ABERDEEN, MARYLAND 39°28'N - 76°10'W PHILLIPS AAF (ABERDEEN PROVING GROUND) (KAPG)

Amdt 2C 31DEC20

# RNAV (GPS) RWY 22

NE-3, 16 JUN 2022 to 14 JUL 2022

NE-3, 16 JUN 2022 to 14 JUL 2022