

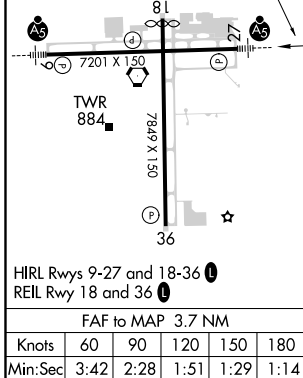
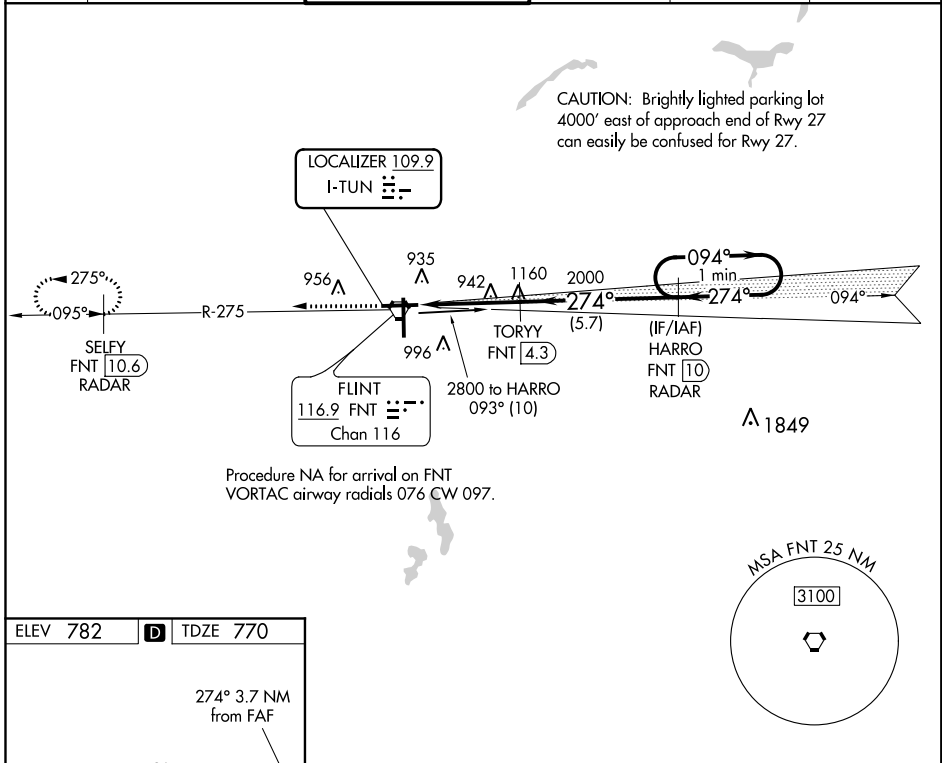
LOC I-TUN 109.9	APP CRS 274°	Rwy Idg 7201 TDZE 770 Apt Elev 782
---------------------------	------------------------	---

ILS or LOC RWY 27

BISHOP INTL (F'NT)

DME or RADAR required for procedure entry. DME or RADAR required.		MALSR 	MISSED APPROACH: Climb to 2600 on FNT VORTAC R-275 direct SELFY/FNT VORTAC 10.6 DME/RADAR and hold.
	DME from FNT VORTAC. Simultaneous reception of I-TUN and FNT DME required. For inop ALS, increase S-LOC 27 Cat A/B visibility to 1 SM, and Cat C/D visibility to 1 3/8 SM.		

ATIS 133.15	GREAT LAKES APP CON * 118.8 257.9	FLINT TOWER * 126.3 (CTAF) 257.9	GND CON 121.9	CLNC DEL 121.75	UNICOM 122.95
-----------------------	---	--	-------------------------	---------------------------	-------------------------



ELEV 782	D	TDZE 770		
2600	FNT R-275	SELYF FNT 10.6 RADAR	HARRO FNT 10 RADAR	One Minute Holding Pattern
*LOC only.				
FNT 0.6	*FNT 2	TORYY FNT 4.3	2000	2800
GS 3.00° TCH 56				
CATEGORY A B C D				
S-ILS 27 970-1/2 200 (200-1/2)				
S-LOC 27 1260-1/2 490 (500-1/2) 1260-1 490 (500-1)				
CIRCLING 1260-1 478 (500-1) 1300-1 518 (600-1) 1300-1 1/2 518 (600-1 1/2) 1520-2 1/4 738 (800-2 1/4)				

EC-1, 16 JUN 2022 to 14 JUL 2022

EC-1, 16 JUN 2022 to 14 JUL 2022