

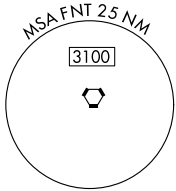
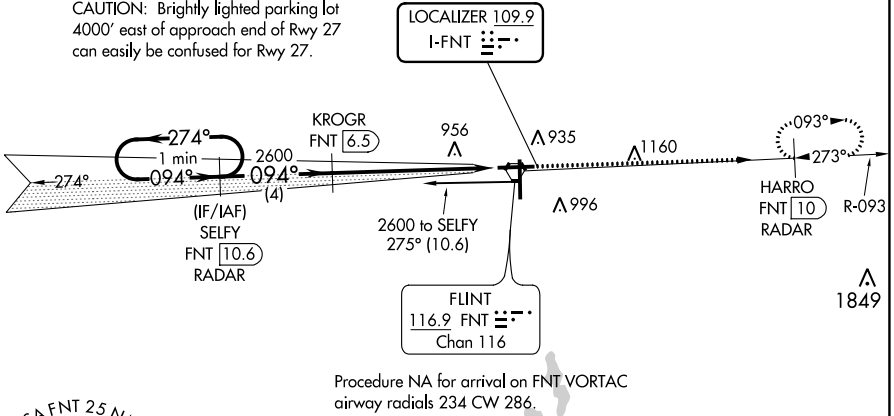
LOC I-FNT <b>109.9</b>	APP CRS <b>094°</b>	Rwy Idg <b>7201</b> TDZE <b>771</b> Apt Elev <b>782</b>
---------------------------	------------------------	---

# ILS or LOC RWY 9

BISHOP INTL (F'NT)

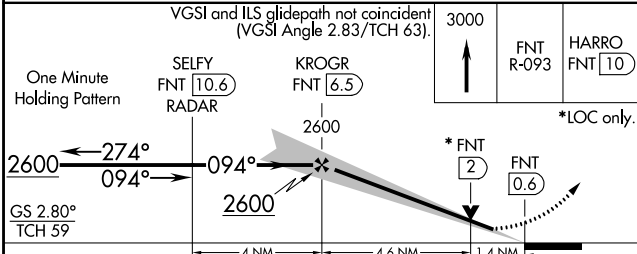
DME or RADAR required for procedure entry. DME or RADAR required.		MALSR		MISSED APPROACH: Climb to 3000 on FNT VORTAC R-093 to HARRO/FNT VORTAC 10 DME/RADAR and hold.	
DME from FNT VORTAC. Simultaneous reception of I-FNT and FNT DME required. For inop ALS, increase S-LOC 9 Cat C/D visibility to 1 3/8 SM. ** RVR 1800 authorized with use of FD or AP or HUD to DA.		ATIS <b>133.15</b> GREAT LAKES APP CON * <b>118.8 257.9</b> FLINT TOWER * <b>126.3 (CTAF) 257.9</b>		GND CON <b>121.9</b> CLNC DEL <b>121.75</b> UNICOM <b>122.95</b>	

CAUTION: Brightly lighted parking lot 4000' east of approach end of Rwy 27 can easily be confused for Rwy 27.



EC-1, 16 JUN 2022 to 14 JUL 2022

EC-1, 16 JUN 2022 to 14 JUL 2022



ELEV 782	TDZE 771
----------	----------

HIRL Rwy 9-27 and 18-36	REIL Rwy 18 and 36
FAF to MAP 6 NM	
Knots	60 90 120 150 180
Min:Sec	6:00 4:00 3:00 2:24 2:00

CATEGORY	A	B	C	D
S-ILS 9 **	971/24 200 (200-1/2)			
S-LOC 9	1280/24	509 (500-1/2)	1280/55	509 (500-1)
CIRCLING	1280-1 498 (500-1)	1300-1 518 (600-1)	1300-1 1/2 518 (600-1 1/2)	1520-2 1/4 738 (800-2 1/4)