

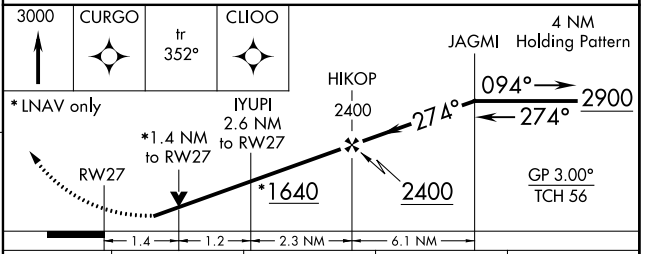
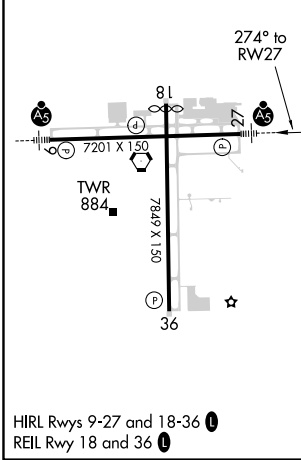
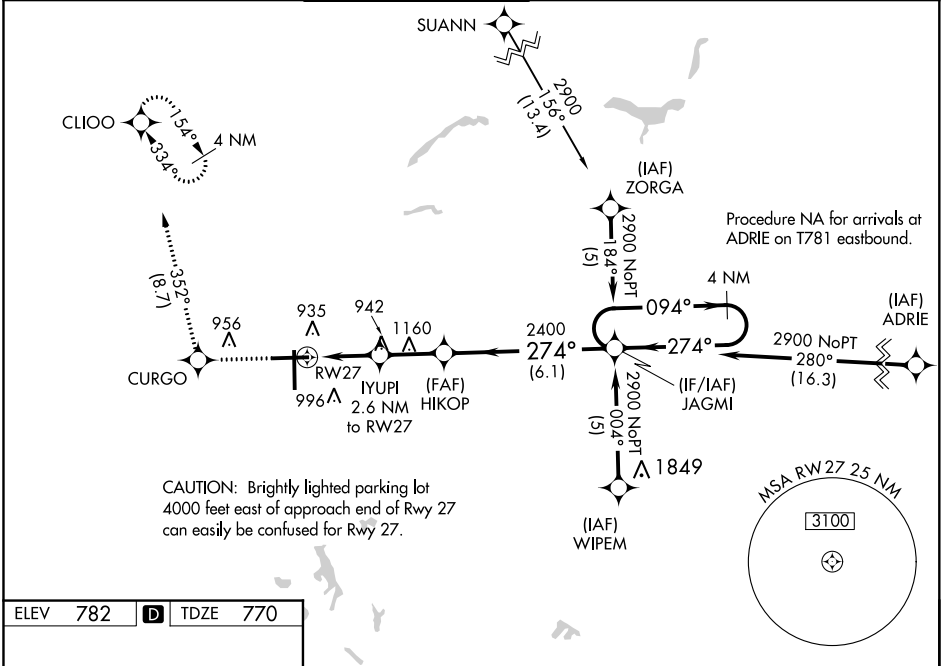
WAAS CH 72810 W27A	APP CRS 274°	Rwy Idg TDZE 770 Apt Elev 782	7201
--	------------------------	---	-------------

RNAV (GPS) RWY 27

BISHOP INTL (F'NT)

	For uncompensated Baro-VNAV systems, LNAV/VNAV NA below -16°C (4°F) or above 54°C (130°F). Rwy 27 helicopter visibility reduction below 3/4 SM NA. DME/DME RNP-0.3 NA. For inop ALS, increase LNAV/VNAV all Cats visibility to 1 3/8 SM, LNAV Cat A/B visibility to 1 SM and LNAV Cat C/D visibility to 1 3/8 SM.	MALSR 	MISSED APPROACH: Climb to 3000 direct CURGO and track 352° to CLIOO and hold.
--	---	-----------	---

ATIS 133.15	GREAT LAKES APP CON * 118.8 257.9	FLINT TOWER * 126.3 (CTAF) 0 257.9	GND CON 121.9	CLNC DEL 121.75	UNICOM 122.95
-----------------------	---	--	-------------------------	---------------------------	-------------------------



CATEGORY	A	B	C	D
LPV DA		1098-3/4	328 (400-3/4)	
LNAV/VNAV DA		1240-1	470 (500-1)	
LNAV MDA	1260-3/4	490 (500-3/4)	1260-1	490 (500-1)
CIRCLING	1260-1 478 (500-1)	1300-1 518 (600-1)	1300-1 1/2 518 (600-1 1/2)	1520-2 1/4 738 (800-2 1/4)

EC-1, 16 JUN 2022 to 14 JUL 2022

EC-1, 16 JUN 2022 to 14 JUL 2022