


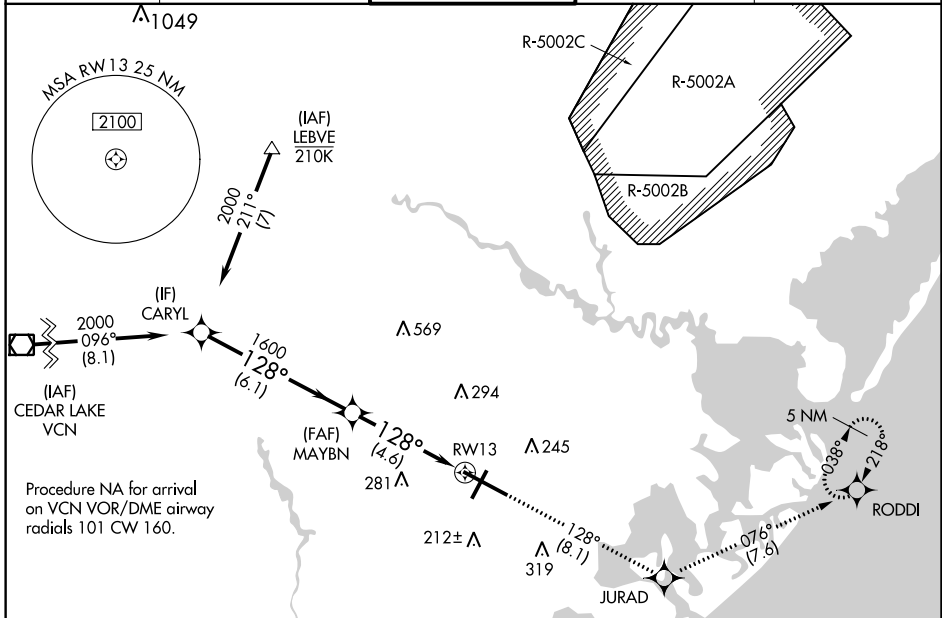
APP CRS	Rwy Ldg	10000
128°	TDZE	75
	Apt Elev	75

RNAV (RNP) Z RWY 13

ATLANTIC CITY INTL (ACY)

<p>NA For uncompensated Baro-VNAV systems, procedure NA below -13°C (9°F) or above 54°C (130°F). GPS required. ASR For inop ALS, increase RNP 0.30 all Cats visibility to RVR 6000.</p>	<p>MALSR</p> 	<p>MISSED APPROACH: Climb to 2000 on track 128° to JURAD and on track 076° to RODDI and hold.</p>
--	---	--

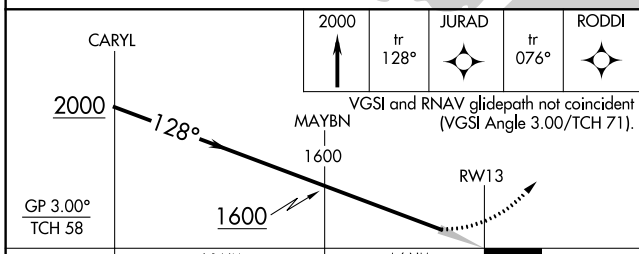
<p>ATIS 125.725 316.15</p>	<p>ATLANTIC CITY APP CON 124.6 327.125</p>	<p>ATLANTIC CITY TOWER 120.3 239.0</p>	<p>GND CON 121.9 284.6</p>	<p>CLNC DEL 127.85 353.775</p>
---------------------------------------	---	---	---------------------------------------	---



NE-2, 16 JUN 2022 to 14 JUL 2022

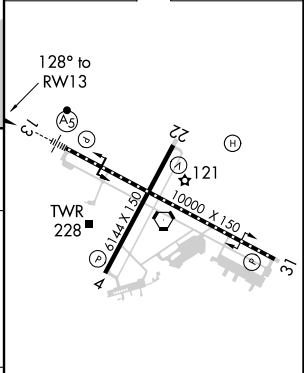
NE-2, 16 JUN 2022 to 14 JUL 2022

ELEV	75	D	TDZE	75
------	----	----------	------	----



2000	↑	tr 128°	JURAD	↑	tr 076°	RODDI
------	---	---------	-------	---	---------	-------

VGSI and RNAV glidepath not coincident (VGSI Angle 3.00/TCH 71).



CATEGORY	A	B	C	D
RNP 0.30 DA		442/40	367 (400-¾)	

TDZ/CL Rwy 13
 HIRL Rwy 4-22 and 13-31
 REIL Rwy 31

AUTHORIZATION REQUIRED