

VOR/DME EWN 113.6 Chan 83	APP CRS 226°	Rwy Idg 6153 TDZE 17 Apt Elev 18
-----------------------------------------------	------------------------	-------------------------------------------------------------

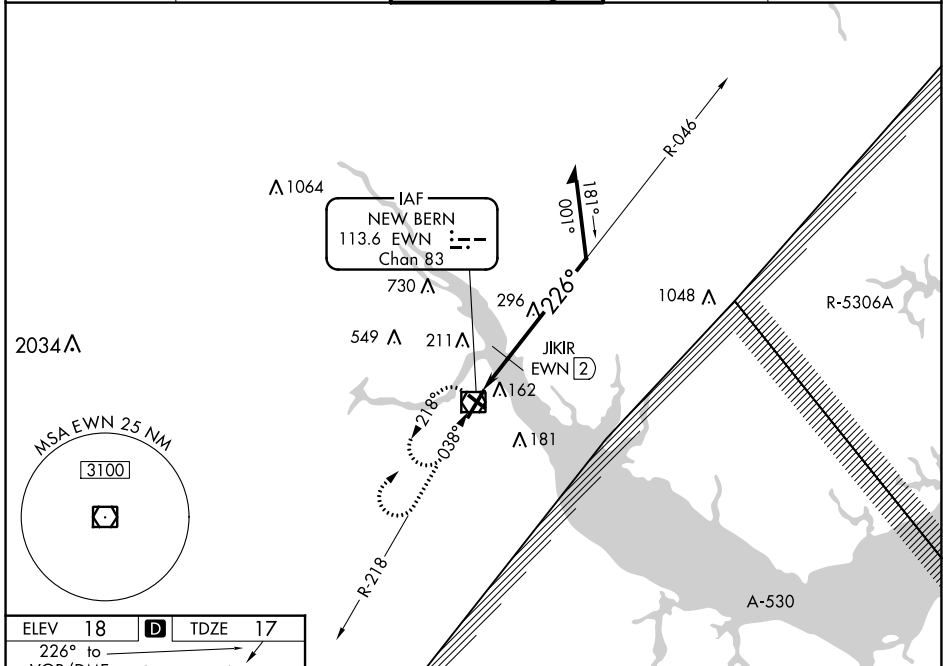
VOR RWY 22

COASTAL CAROLINA RGNL (EWN)

⚠ Rwy 14, 32 helicopter visibility reduction below 1 SM NA. Rwy 22 helicopter visibility reduction below 3/4 SM NA. Circling Rwy 14, 32 NA at night. JKIR fix minimums:
⚠ S-22 Cat D minimums NA when using Cherry Point altimeter setting. When local altimeter setting not received, use Cherry Point altimeter setting and increase all MDAs 40 feet and Circling Cat D visibility 1/4 SM and JKIR fix minimums Circling Cat C/D visibility 1/4 SM.

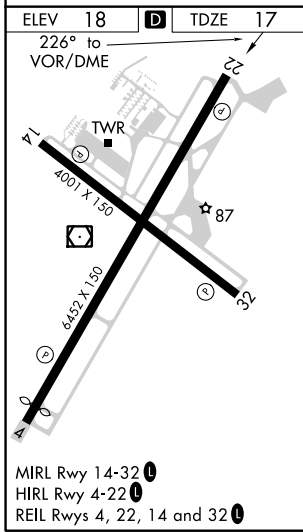
MISSED APPROACH: Climb to 1000 then climbing right turn to 2000 direct EWN VOR/ DME and hold, continue climb-in-hold to 2000.

ASOS 118.525	CHERRY POINT APP CON 119.35 374.9	NEW BERN TOWER ★ 124.25 (CTAF) 0	CLNC DEL 121.7	GND CON 121.7
------------------------	---------------------------------------------	--------------------------------------------	--------------------------	-------------------------



SE-2, 16 JUN 2022 to 14 JUL 2022

SE-2, 16 JUN 2022 to 14 JUL 2022



1000	2000	EWN	EWN VOR/DME	Remain within 10 NM
↑	↷	☐	6000	
VGSI and descent angles not coincident (VGSI Angle 3.00/TCH 31).			JKIR EWN (2)	046° 1800
640 when using Cherry Point altimeter setting.			3.42° TCH 55	226° 600
2 NM				

CATEGORY	A	B	C	D
S-22	600-1	583 (600-1)	600-1 ³ / ₄	583 (600-1 ³ / ₄)
C CIRCLING	600-1	582 (600-1)	600-1 ³ / ₄ 582 (600-1 ³ / ₄)	860-2 ³ / ₄ 842 (900-2 ³ / ₄)
JKIR FIX MINIMUMS (DME REQUIRED)				
S-22	480-1	463 (500-1)	480-1 ³ / ₈	463 (500-1 ³ / ₈)
C CIRCLING	480-1 462 (500-1)	520-1 502 (600-1)	600-1 ¹ / ₂ 582 (600-1 ¹ / ₂)	860-2 ³ / ₄ 842 (900-2 ³ / ₄)