

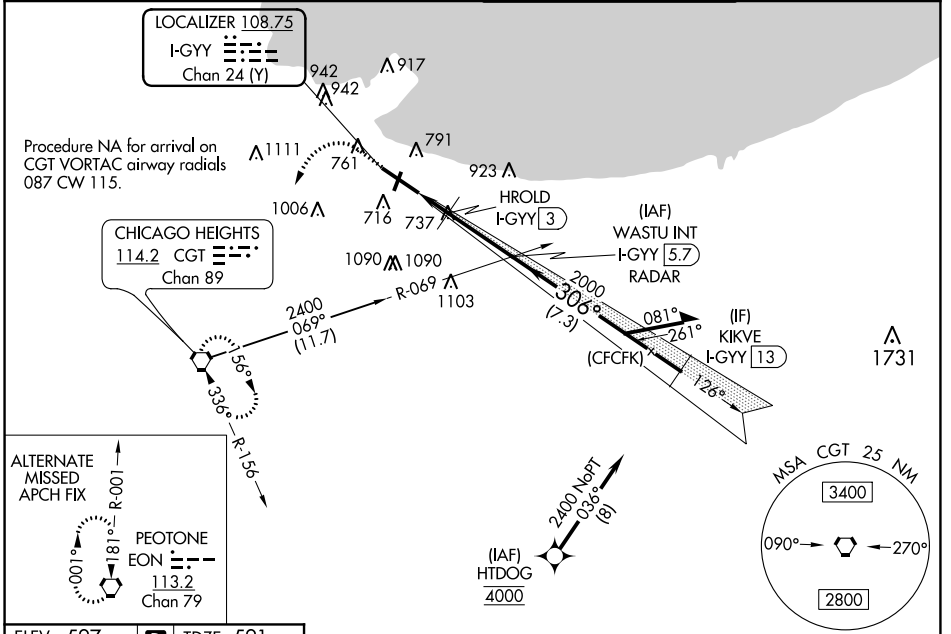
LOC/DME I-GYY 108.75 Chan 24 (Y)	APP CRS 306°	Rwy Idg 7959 TDZE 591 Apt Elev 597
---	------------------------	---

ILS or LOC RWY 30

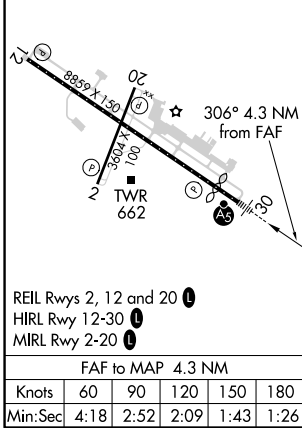
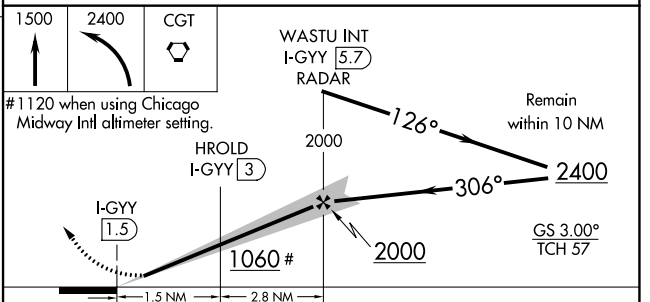
GARY/CHICAGO INTL (GYY)

DME or RADAR required. RNP APCH - GPS from HTOG.	MALSR 	MISSED APPROACH: Climb to 1500 then climbing left turn to 2400 direct CGT VORTAC and hold.
⚠ For inop ALS, increase S-LOC-30 Cats C and D visibility to 1 1/2 SM. HROLD fix minimums: for inop ALS increase S-LOC-30 Cats C and D visibility to RVR 6000. **RVR 1800 authorized with use of FD or AP or HUD to DA (NA when using Chicago Midway Intl altimeter setting).		

ATIS 134.575	CHICAGO APP CON 133.1 285.6	GARY TOWER * 125.6 (CTAF) 0	GND CON 121.9
------------------------	---------------------------------------	---------------------------------------	-------------------------



ELEV 597	D	TDZE 591
----------	----------	----------



CATEGORY	A	B	C	D
S-ILS 30**	791/24 200 (200-1/2)			
S-LOC 30	1060/24	469 (500-1/2)	1060/50	469 (500-1)
CIRCLING	1160-1	1180-1	1400-2 1/4	1420-2 3/4
	563 (600-1)	583 (600-2)	803 (900-2 1/4)	823 (900-2 3/4)
HROLD FIX MINIMUMS				
S-LOC 30	1000/24	409 (500-1/2)	1000/40	409 (500-3/4)
CIRCLING	1160-1	1180-1	1400-2 1/4	1420-2 3/4
	563 (600-1)	583 (600-1)	803 (900-2 1/4)	823 (900-2 3/4)

EC-2, 16 JUN 2022 to 14 JUL 2022

EC-2, 16 JUN 2022 to 14 JUL 2022