

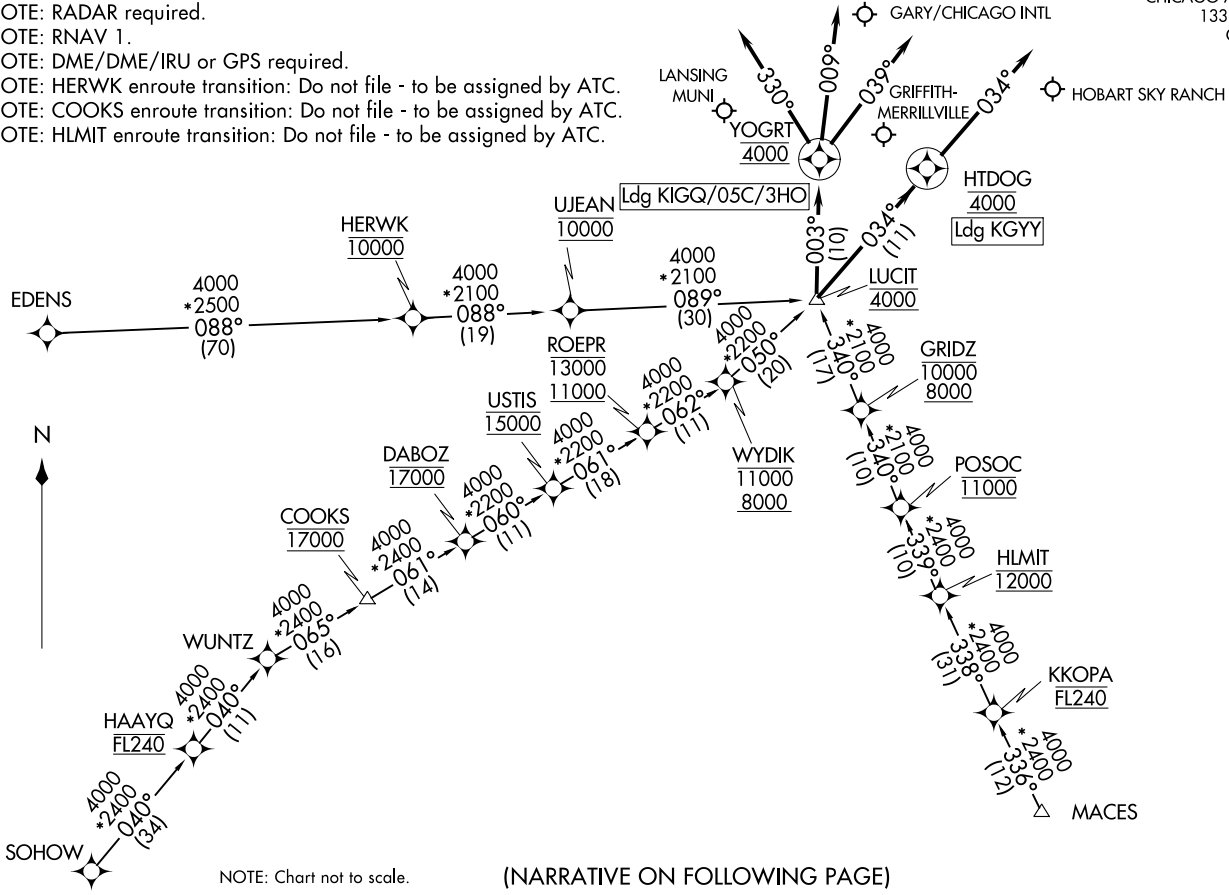
CHICAGO APP CON  
133.1 285.6  
GY ATIS  
134.575

(LUCIT.LUCIT2) 21336  
LUCIT TWO ARRIVAL (RNAV)

AL-748 (FAA)

GARY, INDIANA

NOTE: RADAR required.  
NOTE: RNAV 1.  
NOTE: DME/DME/IRU or GPS required.  
NOTE: HERWK enroute transition: Do not file - to be assigned by ATC.  
NOTE: COOKS enroute transition: Do not file - to be assigned by ATC.  
NOTE: HLMIT enroute transition: Do not file - to be assigned by ATC.



NOTE: Chart not to scale.

(NARRATIVE ON FOLLOWING PAGE)

LUCIT TWO ARRIVAL (RNAV)  
(LUCIT.LUCIT2) 17JUN21

GARY, INDIANA

ARRIVAL ROUTE DESCRIPTION

COOKS TRANSITION (COOKS.LUCIT2):

EDENS TRANSITION (EDENS.LUCIT2):

HERWK TRANSITION (HERWK.LUCIT2):

HLMIT TRANSITION (HLMIT.LUCIT2):

MACES TRANSITION (MACES.LUCIT2):

SOHOW TRANSITION (SOHOW.LUCIT2):

LANDING 05C: From LUCIT on track 003° to cross YOGRT at 4000, then on track 009°. Expect RADAR vectors to final approach course.

LANDING 3HO: From LUCIT on track 003° to cross YOGRT at 4000, then on track 039°. Expect RADAR vectors to final approach course.

LANDING GYY: From LUCIT on track 034° to cross HTDOG at 4000, then on track 034°. Expect RADAR vectors to final approach course.

LANDING IGQ: From LUCIT on track 003° to cross YOGRT at 4000, then on track 330°. Expect RADAR vectors to final approach course.

EC-2, 16 JUN 2022 to 14 JUL 2022

EC-2, 16 JUN 2022 to 14 JUL 2022