

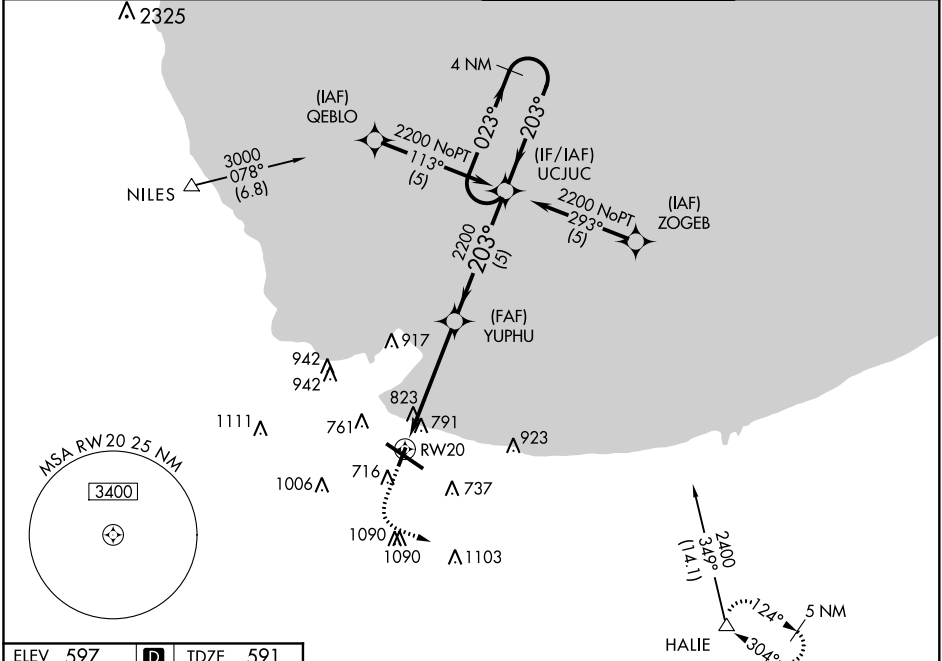
APP CRS 203°	Rwy Idg 3604
	TDZE 591
	Apt Elev 597

RNAV (GPS) RWY 20

GARY/CHICAGO INTL (GYY)

	GPS or RNP-0.3 required. DME/DME RNP-0.3 NA.	MISSED APPROACH: Climb to 1500 then climbing left turn to 2400 direct HALIE WP and hold.	
--	---	--	--

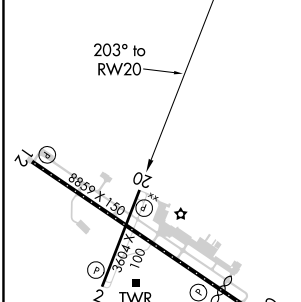
ATIS 134.575	CHICAGO APP CON 133.1 285.6	GARY TOWER ★ 125.6 (CTAF) 1	GND CON 121.9
------------------------	---------------------------------------	---------------------------------------	-------------------------



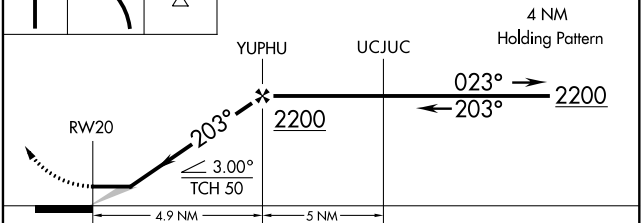
EC-2, 16 JUN 2022 to 14 JUL 2022

EC-2, 16 JUN 2022 to 14 JUL 2022

ELEV 597	D	TDZE 591
----------	----------	----------



1500	2400	HALIE	VGSI and descent angles not coincident (VGSI Angle 3.00/TCH 42).
------	------	-------	--



CATEGORY	A	B	C	D
GLS PA DA	NA			
LNAV/VNAV DA	NA			
LNAV MDA	1080-1 489 (500-1)		1080-1¼ 489 (500-1¼)	1080-1½ 489 (500-1½)
CIRCLING	1140-1 543 (600-1)	1180-1 583 (600-1)	1400-2¼ 803 (900-2¼)	1420-2¾ 823 (900-2¾)

- REIL Rwy 2, 12 and 20 **1**
- HIRL Rwy 12-30 **1**
- MIRL Rwy 2-20 **1**

GARY, INDIANA
Orig-A 24MAR22

41°37'N - 87°25'W

GARY/CHICAGO INTL (GYY) RNAV (GPS) RWY 20