

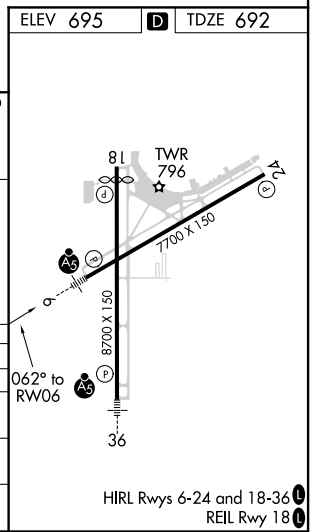
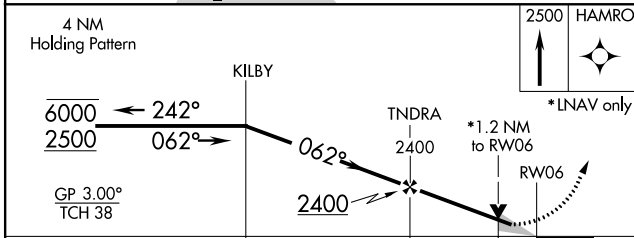
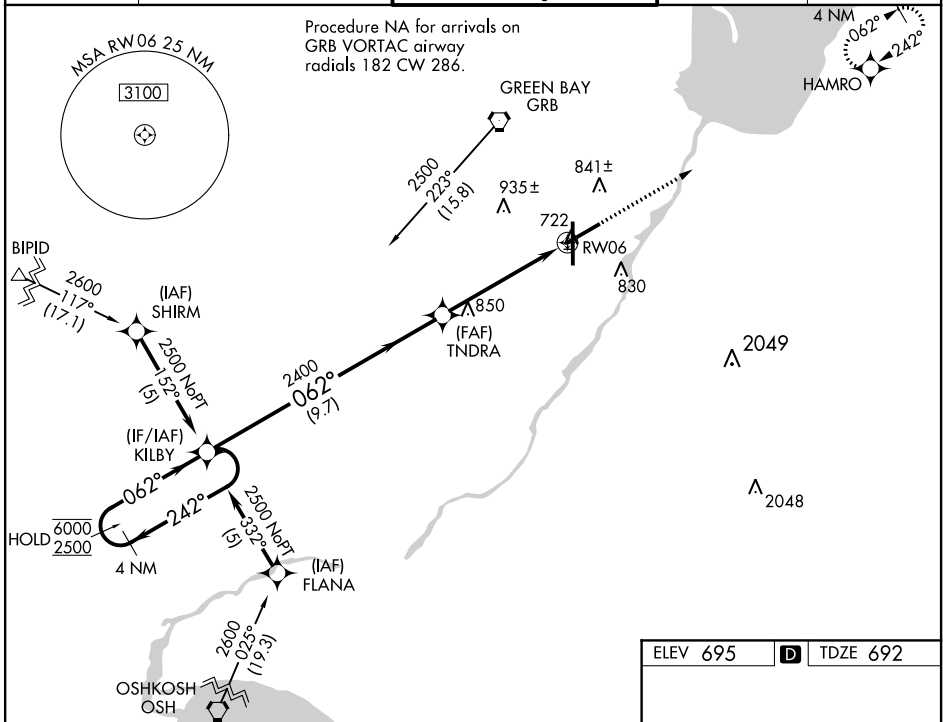
WAAS CH 63015 W06A	APP CRS 062°	Rwy Idg TDZE Apt Elev	7699 692 695
----------------------------------------	------------------------	-----------------------------	-----------------------------------------

RNAV (GPS) RWY 6

GREEN BAY/AUSTIN STRAUBEL INTL (G.R.B)

RNP APCH.	MALS R	MISSED APPROACH: Climb to 2500 direct HAMRO and hold.
▼ For uncompensated Baro-VNAV systems, LNAV/VNAV NA below -16°C or above 54°C. For inop ALS, increase LNAV/VNAV all Cats visibility to RVR 4500, and LNAV Cats C and D ASR visibility to RVR 6000. **RVR 1800 authorized with use of FD or AP or HUD to DA		

ATIS 124.1	GREEN BAY APP CON★ 119.4 338.2	GREEN BAY TOWER ★ 118.7 (CTAF) 257.8	GND CON 121.9	CLNC DEL 121.75
----------------------	------------------------------------------	------------------------------------------------	-------------------------	---------------------------



CATEGORY	A	B	C	D
LPV DA**		892/24		200 (200-½)
LNAV/VNAV DA	1000/24	308 (400-½)		1000/40 308 (400-¾)
LNAV MDA	1100/24	408 (500-½)	1100/40	408 (500-¾)
CIRCLING	1200-1	505 (600-1)	1300-1¾ 605 (700-1½)	1300-2 605 (700-2)

EC-3, 16 JUN 2022 to 14 JUL 2022

EC-3, 16 JUN 2022 to 14 JUL 2022