

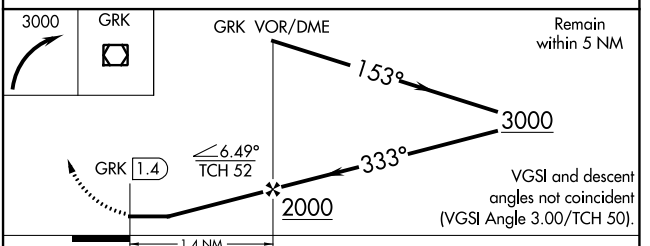
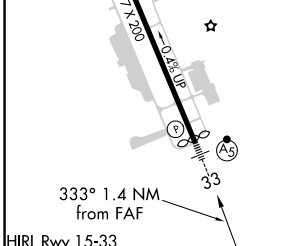
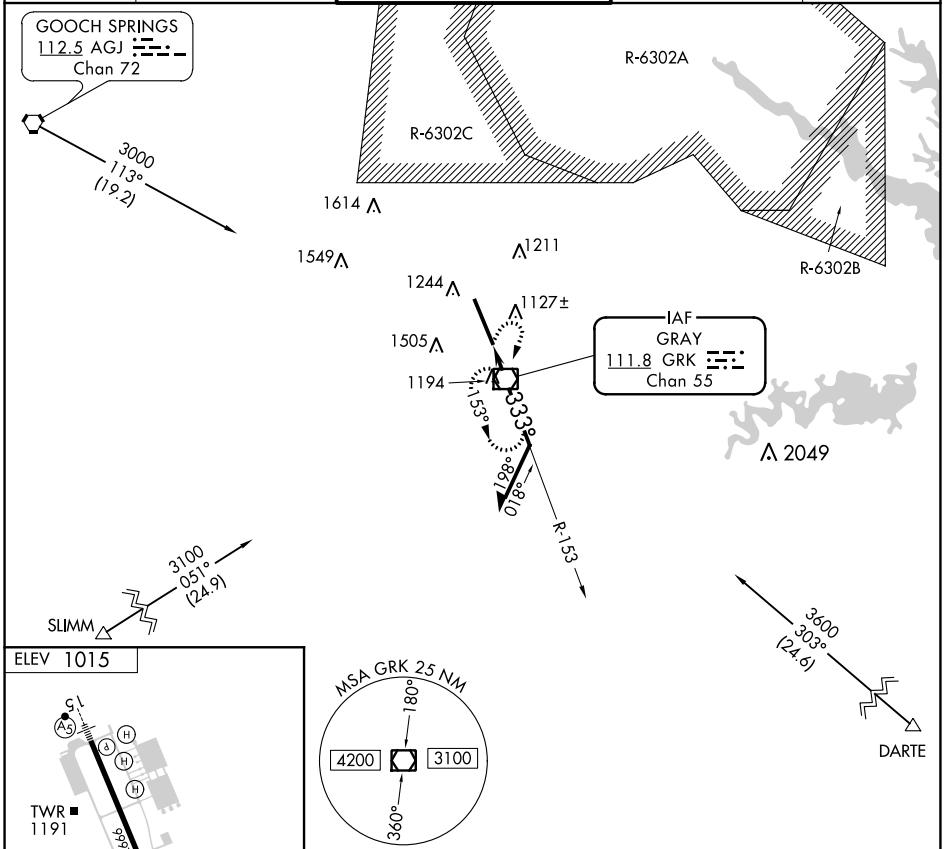
VOR/DME GRK 111.8 Chan 55	APP CRS 333°	Rwy Idg TDZE Apt Elev	9803 N/A 1015
--	------------------------	-----------------------------	--

COPTER VOR RWY 33

ROBERT GRAY AAF (GRK)

		MISSED APPROACH: Climbing right turn to 3000 direct GRK VOR/DME and hold.
--	--	---

ATIS 124.9	GRAY APP CON 120.075 323.15	GRAY TOWER 120.75 285.5	GND CON 121.8 279.5	CLNC DEL 126.2 251.1
----------------------	---------------------------------------	-----------------------------------	-------------------------------	--------------------------------



FAF to MAP 1.4 NM					
Knots	45	60	75	90	105
Min:Sec	1:52	1:24	1:07	0:56	0:48

CATEGORY	COPTER
H-33	1460-¼ 465 (500-¼)

SC-3, 16 JUN 2022 to 14 JUL 2022

SC-3, 16 JUN 2022 to 14 JUL 2022